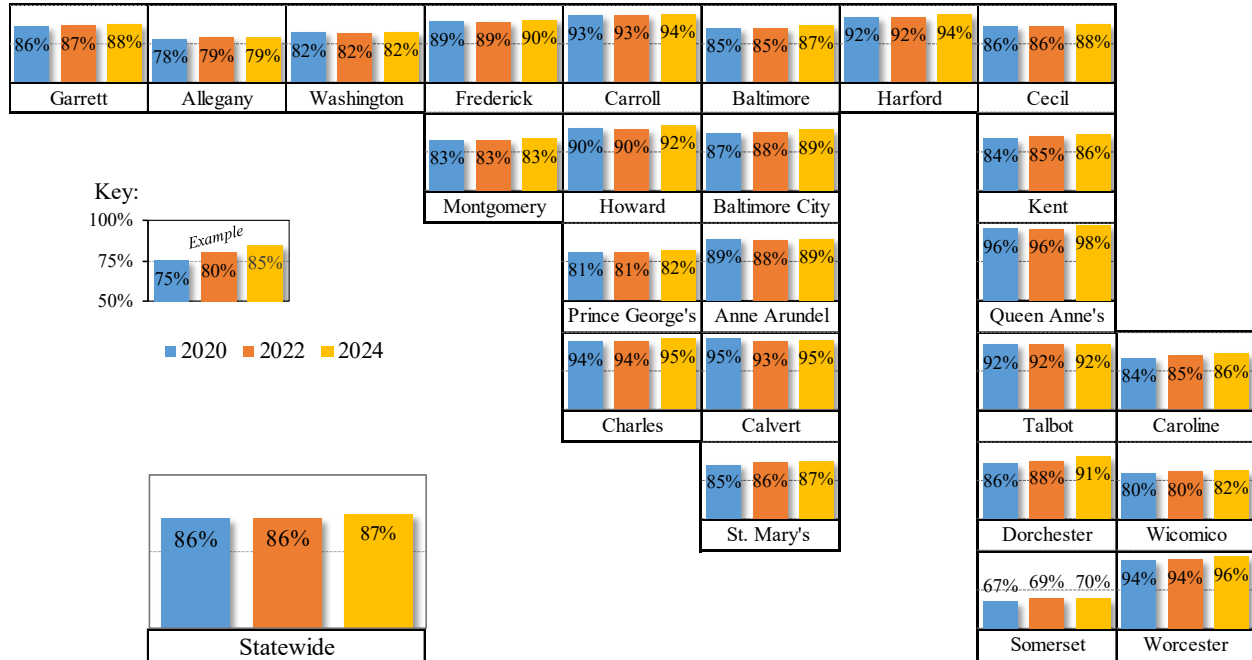


Registered Voters* (as a % of Voting Age Population) – By County 2020, 2022, 2024



*At the time of the general election.

- Please note that voting age (18 and over) population includes individuals who are not eligible to register to vote, including noncitizens and individuals in prison for a felony. Some jurisdictions' voter registration percentages are more affected than others' by populations that are not eligible to register to vote. Somerset County, for example, contains State prison facilities with a significant population relative to the county's overall voting age population, and, of all the counties, Montgomery and Prince George's counties' populations have the greatest proportions of noncitizens.
- Because voting age population estimates for 2024 are not yet available from the U.S. Census Bureau, the voter registration percentages above, for 2024, are calculated using 2023 voting age population estimates, while the 2020 and 2022 voter registration percentages use 2020 and 2022 voting age population estimates, respectively.