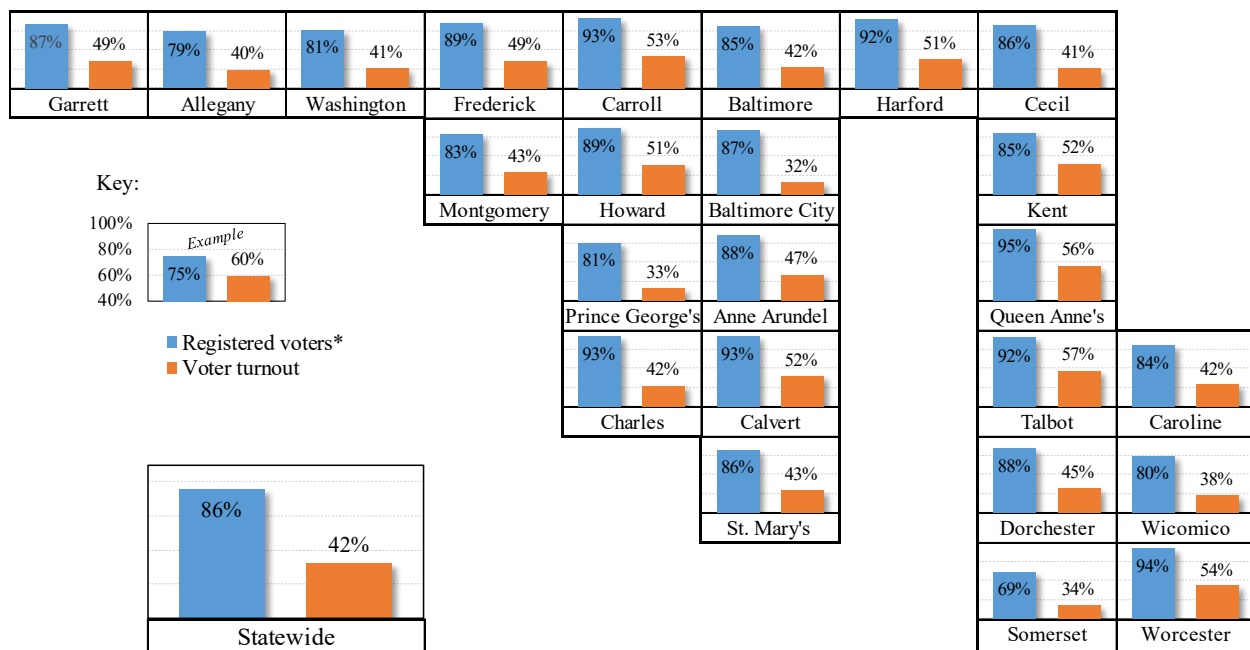


## 2022 Registered Voters and General Election Voter Turnout (Both as a % of Voting Age Population) – By County

- This grid map shows, for the 2022 general election, the number of registered voters at the time of the election and the voter turnout for the election, both as a percentage of the voting age population, in order to be able to see both on the same scale (as a % of voting age population).
- Please note that voting age (18 and over) population includes individuals who are not eligible to register to vote, including noncitizens and individuals in prison for a felony. Some jurisdictions' voter registration and voter turnout percentages are more affected than others' by populations that are not eligible to register or vote. Somerset County, for example, contains State prison facilities with a significant population relative to the county's overall voting age population, and, of all the counties, Montgomery and Prince George's counties' populations have the greatest proportions of noncitizens.



\*At the time of the general election.