
County Revenue Outlook

Fiscal 2014

**Department of Legislative Services
Office of Policy Analysis
Annapolis, Maryland**

January 2014

For further information concerning this document contact:

Library and Information Services
Office of Policy Analysis
Department of Legislative Services
90 State Circle
Annapolis, Maryland 21401

Baltimore Area: 410-946-5400 • Washington Area: 301-970-5400

Other Areas: 1-800-492-7122, Extension 5400

TDD: 410-946-5401 • 301-970-5401

Maryland Relay Service: 1-800-735-2258

E-mail: libr@mlis.state.md.us

Home Page: <http://mgaleg.maryland.gov>

The Department of Legislative Services does not discriminate on the basis of age, ancestry, color, creed, marital status, national origin, race, religion, gender, sexual orientation, or disability in the admission or access to its programs, services, or activities. The Department's Information Officer has been designated to coordinate compliance with the nondiscrimination requirements contained in Section 35.107 of the Department of Justice Regulations. Requests for assistance should be directed to the Information Officer at the telephone numbers shown above.

Contents

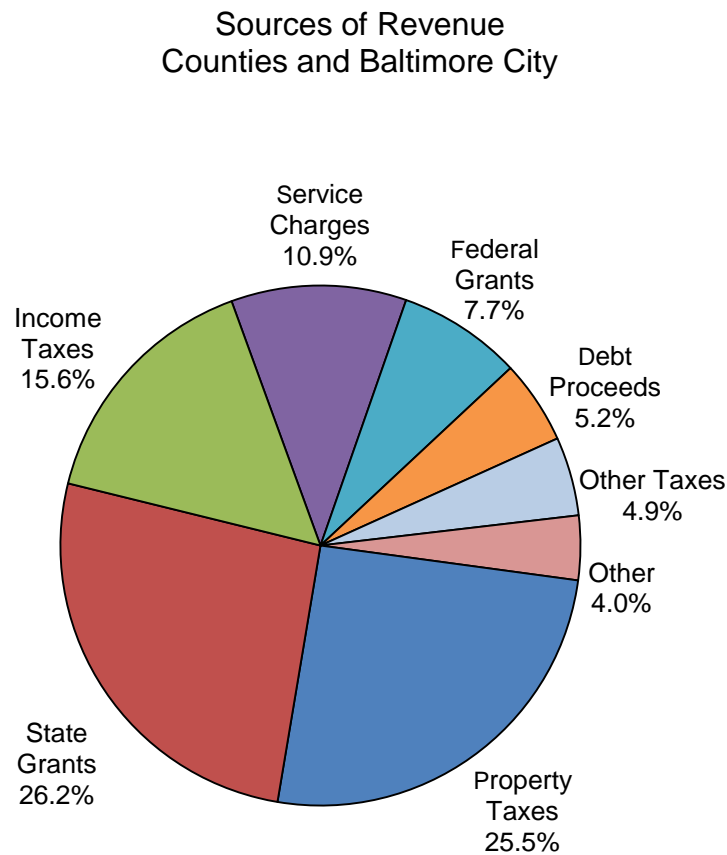
Limited Growth in Local Tax Revenues.....	1
Local Tax Revenue Inches Upward	2
Homestead Tax Credit Softened Impact on County Assessable Base.....	3
Estimated Assessable Base Loss Due to Homestead Property Tax Credit.....	4
County Tax Relief Due to Homestead Tax Credits.....	5
Homestead Tax Credit Impact on Property Tax (5% Homestead Tax Cap)	6
Homestead Tax Credit Impact on Property Tax (10% Homestead Tax Cap)	7
Actual County Property Tax Rates in Comparison to the Constant Yield Rate	8
Revenue Yield from Property Tax Rates Above Constant Yield.....	9
Revenue Loss from Property Tax Rates Below Constant Yield	10
Local Income Tax Revenues Mirror State Collections.....	11
Additional Revenue Yield from Imposing Maximum County Income Tax Rate.....	12
Real Estate Meltdown Impacts Recordation and Transfer Taxes.....	13

Appendices

Appendix 1. County Government Revenues – Fiscal 2012	14
Appendix 2. County Government Revenues – Fiscal 2013	15
Appendix 3. County Government Revenues – Fiscal 2014.....	16
Appendix 4. Property Tax Revenue Trend for Fiscal 2012-2014.....	17
Appendix 5. Local Income Tax Revenue Trend for Fiscal 2012-2014	18
Appendix 6. Recordation Tax Revenue Trend for Fiscal 2012-2014	19
Appendix 7. Transfer Tax Revenue Trend for Fiscal 2012-2014	20
Appendix 8. Hotel/Motel Tax Revenue Trend for Fiscal 2012-2014	21
Appendix 9. Admissions and Amusement Tax Revenue Trend for Fiscal 2012-2014	22
Appendix 10. Total Local Taxes for Fiscal 2012-2014.....	23
Appendix 11. Total General Fund Revenues for Fiscal 2012-2014	24
Appendix 12. County Assessable Base – Real Property Tax Base	25
Appendix 13. County Assessable Base – Real Property Tax Base (Annual Percent Change).....	26
Appendix 14. Assessable Base Loss Due to Homestead Tax Credit	27
Appendix 15. Assessable Base Loss Due to Homestead Tax Credit (Percent of Real Property Base).....	28

Appendix 16. County Assessable Base – Real Property Adjusted for Homestead Tax Credit	29
Appendix 17. County Assessable Base – Real Property Adjusted for Homestead Tax Credit (Annual Percent Change).....	30

Limited Growth in Local Tax Revenues Fiscal 2013 and 2014

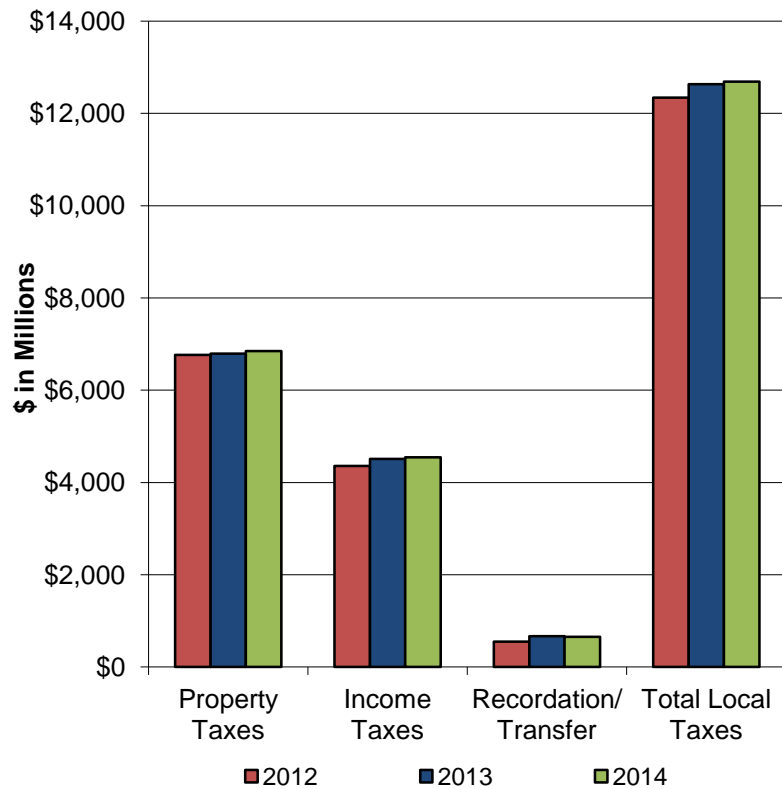


FY 2012 = \$27.9 Billion

	Annual Percent Change		
	<u>FY 2012-13</u>	<u>FY 2013-14</u>	<u>Two-year Average</u>
Property Taxes	0.4%	0.8%	0.6%
Income Taxes	3.6%	0.8%	2.2%
Recordation Taxes	33.7%	-5.7%	12.3%
Transfer Taxes	9.9%	1.8%	5.8%
Hotel/Motel Taxes	-1.3%	-3.4%	-2.4%
Admissions Taxes	2.4%	-0.6%	0.9%
Total Local Taxes	2.3%	0.4%	1.4%
General Fund Revenues	1.4%	2.9%	2.1%

Source: Department of Legislative Services, County Budgets

Local Tax Revenue Inches Upward Fiscal 2012-2014 (\$ in Millions)



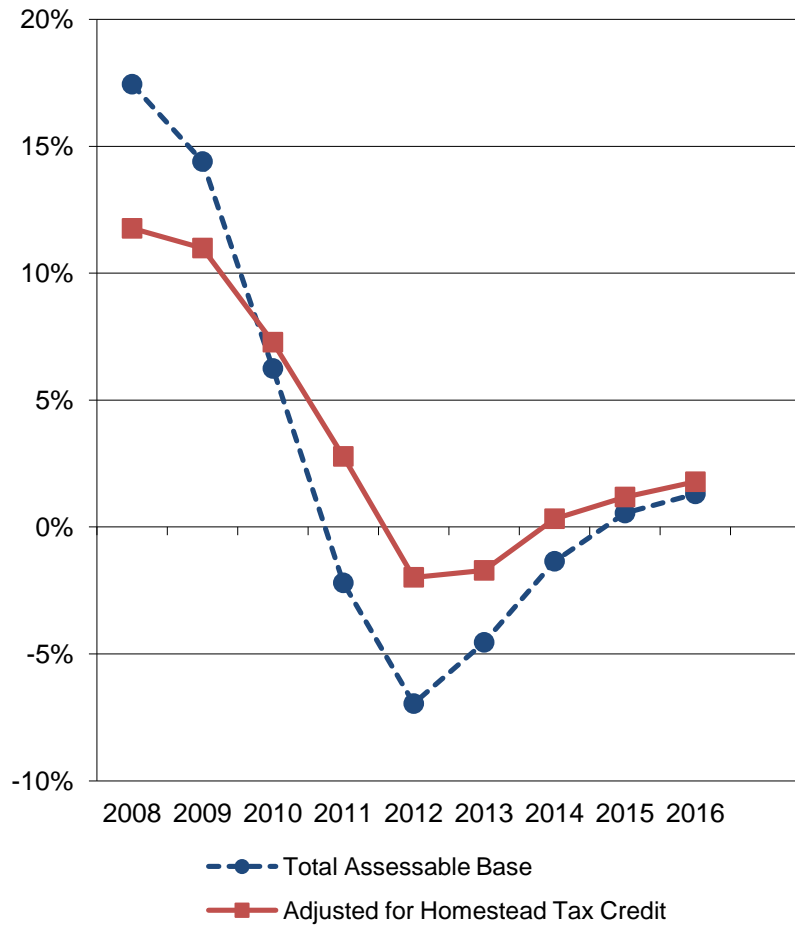
Fiscal 2012	
Property Taxes	\$6,765.6
Income Taxes	4,358.3
Recordation/Transfer	553.0
Total Local Taxes	\$12,342.9

Fiscal 2013	
Property Taxes	\$6,790.8
Income Taxes	4,513.8
Recordation/Transfer	671.3
Total Local Taxes	\$12,629.7

Fiscal 2014	
Property Taxes	\$6,847.3
Income Taxes	4,548.8
Recordation/Transfer	656.8
Total Local Taxes	\$12,686.4

Source: Department of Legislative Services, County Budgets

Homestead Tax Credit Softened Impact on County Assessable Base



Source: Department of Legislative Services, County Budgets

Real Property Assessable Base (\$ in Thousands)

FY 2007	\$525,073,581	
FY 2008	616,682,254	17.4%
FY 2009	705,485,547	14.4%
FY 2010	749,554,984	6.2%
FY 2011	733,059,499	-2.2%
FY 2012	682,053,614	-7.0%
FY 2013	651,053,089	-4.5%
FY 2014	642,258,648	-1.4%
FY 2015	645,786,090	0.5%
FY 2016	654,210,091	1.3%

Adjusted for Homestead Tax Credit (\$ in Thousands)

FY 2007	\$467,758,384	
FY 2008	522,797,391	11.8%
FY 2009	580,258,229	11.0%
FY 2010	622,516,493	7.3%
FY 2011	639,831,959	2.8%
FY 2012	627,152,668	-2.0%
FY 2013	616,427,411	-1.7%
FY 2014	618,432,179	0.3%
FY 2015	625,740,779	1.2%
FY 2016	636,898,578	1.8%

Estimated Assessable Base Loss Due to Homestead Property Tax Credit

Fiscal 2014

(\$ in Thousands)

County	Total County Assessable Base	Loss Due to 10% Homestead Cap	After 10% Homestead Cap	Percent Lost	Loss Due to Actual Homestead Cap	After Actual Homestead Cap	Percent Lost
Allegany	\$3,579,448	\$5,924	\$3,573,524	0.2%	\$16,430	\$3,563,018	0.5%
Anne Arundel	73,865,355	68,273	73,797,082	0.1%	10,418,753	63,446,602	14.1%
Baltimore City	32,548,629	572,484	31,976,145	1.8%	2,954,215	29,594,414	9.1%
Baltimore	75,469,078	26,210	75,442,868	0.0%	3,154,084	72,314,994	4.2%
Calvert	11,334,235	5,364	11,328,871	0.0%	5,364	11,328,871	0.0%
Caroline	2,550,357	4,484	2,545,873	0.2%	37,553	2,512,804	1.5%
Carroll	17,999,418	2,505	17,996,913	0.0%	62,040	17,937,378	0.3%
Cecil	9,280,440	1,940	9,278,500	0.0%	5,015	9,275,425	0.1%
Charles	15,414,254	4,121	15,410,133	0.0%	22,567	15,391,687	0.1%
Dorchester	2,861,600	4,836	2,856,764	0.2%	54,907	2,806,693	1.9%
Frederick	25,433,656	10,971	25,422,685	0.0%	84,530	25,349,126	0.3%
Garrett	4,621,273	7,418	4,613,855	0.2%	86,732	4,534,541	1.9%
Harford	25,569,637	2,784	25,566,853	0.0%	17,601	25,552,036	0.1%
Howard	42,755,118	4,392	42,750,726	0.0%	1,125,312	41,629,806	2.6%
Kent	2,976,520	16,038	2,960,482	0.5%	142,073	2,834,447	4.8%
Montgomery	161,008,847	117,012	160,891,835	0.1%	117,012	160,891,835	0.1%
Prince George's	73,074,771	18,024	73,056,747	0.0%	2,836,494	70,238,277	3.9%
Queen Anne's	7,636,884	8,785	7,628,099	0.1%	206,396	7,430,488	2.7%
St. Mary's	11,806,248	19,258	11,786,990	0.2%	402,004	11,404,244	3.4%
Somerset	1,417,905	3,786	1,414,119	0.3%	3,786	1,414,119	0.3%
Talbot	8,789,477	13,663	8,775,814	0.2%	1,725,579	7,063,898	19.6%
Washington	11,906,479	3,039	11,903,440	0.0%	45,177	11,861,302	0.4%
Wicomico	5,832,822	2,382	5,830,440	0.0%	4,726	5,828,096	0.1%
Worcester	14,526,197	9,337	14,516,860	0.1%	298,119	14,228,078	2.1%
Total	\$642,258,648	\$933,030	\$641,325,618	0.1%	\$23,826,469	\$618,432,179	3.7%

Source: State Department of Assessments and Taxation

County Tax Relief Due to Homestead Tax Credits

County	Fiscal 2013		Fiscal 2014		Fiscal 2015	
	Revenue Foregone	Percent of Base	Revenue Foregone	Percent of Base	Revenue Foregone	Percent of Base
Allegany	\$326,614	0.9%	\$161,014	0.5%	\$92,032	0.3%
Anne Arundel	113,812,811	16.4%	98,978,154	14.1%	93,088,961	13.1%
Baltimore City	94,695,124	12.6%	66,410,753	9.1%	56,748,400	7.7%
Baltimore	64,413,338	7.5%	34,694,924	4.2%	20,493,066	2.5%
Calvert	168,401	0.2%	47,847	0.0%	13,915	0.0%
Caroline	841,459	3.5%	352,998	1.5%	202,805	0.9%
Carroll	1,781,103	1.0%	631,567	0.3%	242,885	0.1%
Cecil	175,176	0.2%	49,684	0.1%	29,265	0.0%
Charles	527,744	0.3%	271,932	0.1%	130,622	0.1%
Dorchester	1,171,668	4.0%	535,892	1.9%	339,453	1.2%
Frederick	2,214,886	0.8%	899,399	0.3%	561,068	0.2%
Garrett	1,174,269	2.6%	858,647	1.9%	428,403	1.0%
Harford	519,989	0.2%	183,402	0.1%	110,890	0.0%
Howard	22,991,919	4.6%	13,391,213	2.6%	8,722,272	1.7%
Kent	1,990,509	6.4%	1,451,986	4.8%	1,007,222	3.4%
Montgomery	2,346,539	0.1%	1,194,693	0.1%	1,015,824	0.1%
Prince George's	70,833,993	7.0%	37,413,356	3.9%	33,794,851	3.5%
Queen Anne's	3,406,655	5.0%	1,748,381	2.7%	1,071,810	1.7%
St. Mary's	6,103,443	6.0%	3,445,174	3.4%	2,052,875	2.0%
Somerset	83,863	0.7%	34,642	0.3%	16,616	0.1%
Talbot	10,095,790	22.2%	8,834,964	19.6%	7,948,088	18.4%
Washington	1,632,551	1.4%	428,278	0.4%	227,255	0.2%
Wicomico	106,042	0.2%	42,940	0.1%	31,955	0.1%
Worcester	4,009,236	3.4%	2,295,516	2.1%	1,590,535	1.5%
Statewide	\$405,423,121	5.3%	\$274,357,357	3.7%	\$229,961,067	3.1%

Source: State Department of Assessments and Taxation

Homestead Tax Credit Impact on Property Tax Sample Property Triennial Valuation History

Actual Market Value of Assessed Property

<u>January 2000</u>	<u>January 2003</u>	<u>January 2006</u>	<u>January 2009</u>
\$200,000	\$245,000	\$455,000	\$425,000
	22.5%	85.7%	-6.6%

Resulting Annual Tax Assessment Liability from 5% Homestead Tax Cap

<u>Tax Year</u>	<u>Phased-in Assessment</u>	<u>Taxable Assessment</u>	<u>Homestead Credit Assessment</u>
July 2002	\$200,000	\$200,000	\$0
July 2003	215,000	210,000	5,000
July 2004	230,000	220,500	9,500
July 2005	245,000	231,525	13,475
July 2006	315,000	243,101	71,899
July 2007	385,000	255,256	129,744
July 2008	455,000	268,019	186,981
July 2009	425,000	281,420	143,580
July 2010	425,000	295,491	129,509
July 2011	425,000	310,266	114,734

Source: Department of Legislative Services

Homestead Tax Credit Impact on Property Tax Sample Property Triennial Valuation History

Actual Market Value of Assessed Property

<u>January 2000</u>	<u>January 2003</u>	<u>January 2006</u>	<u>January 2009</u>
\$200,000	\$245,000	\$455,000	\$425,000
	22.5%	85.7%	-6.6%

Resulting Annual Tax Assessment Liability from 10% Homestead Tax Cap

<u>Tax Year</u>	<u>Phased-in Assessment</u>	<u>Taxable Assessment</u>	<u>Homestead Credit Assessment</u>
July 2002	\$200,000	\$200,000	\$0
July 2003	215,000	215,000	0
July 2004	230,000	230,000	0
July 2005	245,000	245,000	0
July 2006	315,000	269,500	45,500
July 2007	385,000	296,450	88,550
July 2008	455,000	326,095	128,905
July 2009	425,000	358,705	66,296
July 2010	425,000	394,575	30,425
July 2011	425,000	425,000	0

Source: Department of Legislative Services

Actual County Property Tax Rates in Comparison to the Constant Yield Rate

County	Actual FY 2013	Actual FY 2014	Difference	Constant Yield Rate	Difference	Amount in Excess of Constant Yield Ranking by Highest to Lowest		
Allegany	\$0.981	\$0.980	-\$0.001	\$0.997	-\$0.017	1.	Charles	\$0.037
Anne Arundel	0.941	0.950	0.009	0.943	0.007	2.	Montgomery	0.016
Baltimore City	2.268	2.248	-0.020	2.275	-0.027	3.	Wicomico	0.016
Baltimore	1.100	1.100	0.000	1.107	-0.007	4.	Howard	0.014
Calvert	0.892	0.892	0.000	0.932	-0.040	5.	Caroline	0.014
Caroline	0.890	0.940	0.050	0.926	0.014	6.	Talbot	0.012
Carroll	1.018	1.018	0.000	1.036	-0.018	7.	Anne Arundel	0.007
Cecil	0.991	0.991	0.000	1.031	-0.040	8.	Somerset	0.005
Charles*	1.121	1.205	0.084	1.168	0.037	9.	St. Mary's	0.004
Dorchester	0.976	0.976	0.000	1.008	-0.032	10.	Garrett	-0.003
Frederick*	1.064	1.064	0.000	1.082	-0.018	11.	Kent	-0.004
Garrett	0.990	0.990	0.000	0.993	-0.003	12.	Baltimore	-0.007
Harford	1.042	1.042	0.000	1.066	-0.024	13.	Allegany	-0.017
Howard*	1.190	1.190	0.000	1.176	0.014	14.	Frederick	-0.018
Kent	1.022	1.022	0.000	1.026	-0.004	15.	Carroll	-0.018
Montgomery*	1.003	1.021	0.018	1.005	0.016	16.	Queen Anne's	-0.022
Prince George's*	1.319	1.319	0.000	1.341	-0.022	17.	Prince George's	-0.022
Queen Anne's	0.847	0.847	0.000	0.869	-0.022	18.	Harford	-0.024
St. Mary's	0.857	0.857	0.000	0.853	0.004	19.	Baltimore City	-0.027
Somerset	0.884	0.915	0.031	0.910	0.005	20.	Worcester	-0.027
Talbot	0.491	0.512	0.021	0.500	0.012	21.	Dorchester	-0.032
Washington	0.948	0.948	0.000	0.985	-0.037	22.	Washington	-0.037
Wicomico	0.840	0.909	0.068	0.893	0.016	23.	Calvert	-0.040
Worcester	0.770	0.770	0.000	0.797	-0.027	24.	Cecil	-0.040

*Includes Special Property Tax Rates

Source: State Department of Assessments and Taxation; Department of Legislative Services

Revenue Yield from Property Tax Rates Above Constant Yield Fiscal 2014

County	Assessable Base	Actual Rate	Constant Yield Rate	Difference	Estimated Revenue Yield	Per Capita Yield
Allegany	\$3,540,549,644	\$0.980	\$0.997	-\$0.017	\$0	\$0.00
Anne Arundel	57,940,522,532	0.950	0.943	0.007	4,056,000	7.37
Baltimore City	30,119,989,836	2.248	2.275	-0.027	0	0.00
Baltimore	71,343,003,760	1.100	1.107	-0.007	0	0.00
Calvert	11,212,263,691	0.892	0.932	-0.040	0	0.00
Caroline	2,485,911,585	0.940	0.926	0.014	348,000	10.64
Carroll	17,751,940,514	1.018	1.036	-0.018	0	0.00
Cecil	9,190,720,781	0.991	1.031	-0.040	0	0.00
Charles*	15,153,307,980	1.205	1.168	0.037	5,607,000	37.23
Dorchester	2,811,243,402	0.976	1.008	-0.032	0	0.00
Frederick*	24,910,570,541	1.064	1.082	-0.018	0	0.00
Garrett	4,504,070,632	0.990	0.993	-0.003	0	0.00
Harford	25,138,742,119	1.042	1.066	-0.024	0	0.00
Howard*	40,960,366,097	1.190	1.176	0.014	5,774,000	19.28
Kent	2,810,030,187	1.022	1.026	-0.004	0	0.00
Montgomery*	158,316,722,387	1.021	1.005	0.016	24,856,000	24.74
Prince George's*	68,322,552,210	1.319	1.341	-0.022	0	0.00
Queen Anne's	7,364,983,214	0.847	0.869	-0.022	0	0.00
St. Mary's	11,264,524,685	0.857	0.853	0.004	451,000	4.14
Somerset	1,397,879,234	0.915	0.910	0.005	70,000	2.67
Talbot	6,992,055,657	0.512	0.500	0.012	839,000	22.02
Washington	11,759,845,653	0.948	0.985	-0.037	0	0.00
Wicomico	5,775,405,982	0.909	0.893	0.016	901,000	8.95
Worcester	14,426,474,433	0.770	0.797	-0.027	0	0.00
Total	\$605,493,676,756				\$42,902,000	\$7.29

*Includes Special Property Tax Rates

Source: State Department of Assessments and Taxation; Department of Legislative Services

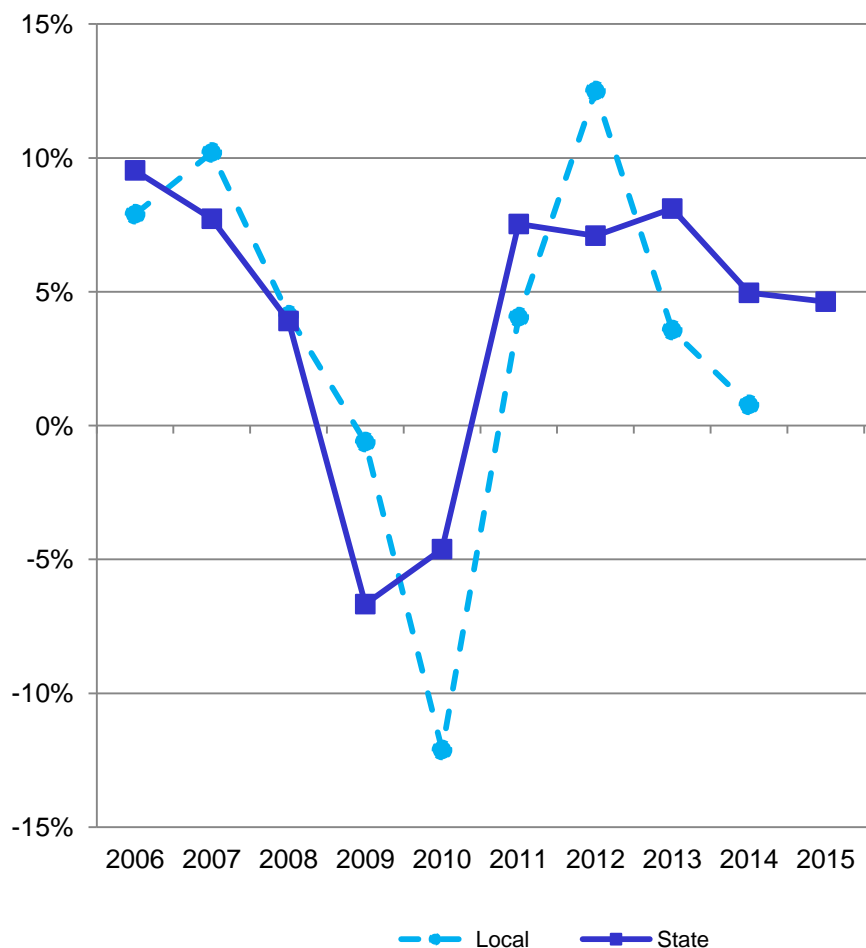
Revenue Loss from Property Tax Rates Below Constant Yield Fiscal 2014

County	Assessable Base	Actual Rate	Constant Yield Rate	Difference	Estimated Revenue Loss	Per Capita Loss
Allegany	\$3,540,549,644	\$0.980	\$0.997	-\$0.017	-\$613,000	-\$8.28
Anne Arundel	57,940,522,532	0.950	0.943	0.007	0	0.00
Baltimore City	30,119,989,836	2.248	2.275	-0.027	-8,132,000	-13.09
Baltimore	71,343,003,760	1.100	1.107	-0.007	-4,994,000	-6.11
Calvert	11,212,263,691	0.892	0.932	-0.040	-4,485,000	-50.04
Caroline	2,485,911,585	0.940	0.926	0.014	0	0.00
Carroll	17,751,940,514	1.018	1.036	-0.018	-3,195,000	-19.11
Cecil	9,190,720,781	0.991	1.031	-0.040	-3,704,000	-36.42
Charles*	15,153,307,980	1.205	1.168	0.037	0	0.00
Dorchester	2,811,243,402	0.976	1.008	-0.032	-900,000	-27.65
Frederick*	24,910,570,541	1.064	1.082	-0.018	-4,448,000	-18.57
Garrett	4,504,070,632	0.990	0.993	-0.003	-135,000	-4.52
Harford	25,138,742,119	1.042	1.066	-0.024	-6,033,000	-24.27
Howard*	40,960,366,097	1.190	1.176	0.014	0	0.00
Kent	2,810,030,187	1.022	1.026	-0.004	-112,000	-5.55
Montgomery*	158,316,722,387	1.021	1.005	0.016	0	0.00
Prince George's*	68,322,552,210	1.319	1.341	-0.022	-15,325,000	-17.39
Queen Anne's	7,364,983,214	0.847	0.869	-0.022	-1,613,000	-33.19
St. Mary's	11,264,524,685	0.857	0.853	0.004	0	0.00
Somerset	1,397,879,234	0.915	0.910	0.005	0	0.00
Talbot	6,992,055,657	0.512	0.500	0.012	0	0.00
Washington	11,759,845,653	0.948	0.985	-0.037	-4,351,000	-29.17
Wicomico	5,775,405,982	0.909	0.893	0.016	0	0.00
Worcester	14,426,474,433	0.770	0.797	-0.027	-3,895,000	-75.52
Total	\$605,493,676,756				-\$61,935,000	-\$10.52

*Includes Special Property Tax Rates

Source: State Department of Assessments and Taxation; Department of Legislative Services

Local Income Tax Revenues Mirror State Collections



Source: Department of Legislative Services, County Budgets

Local Income Tax Revenues (\$ in Millions)

FY 2006	\$3,715.2	7.9%
FY 2007	4,094.2	10.2%
FY 2008	4,262.9	4.1%
FY 2009	4,236.7	-0.6%
FY 2010	3,723.3	-12.1%
FY 2011	3,874.1	4.1%
FY 2012	4,358.3	12.5%
FY 2013	4,513.8	3.6%
FY 2014	4,548.8	0.8%

State Income Tax Revenues (\$ in Millions)

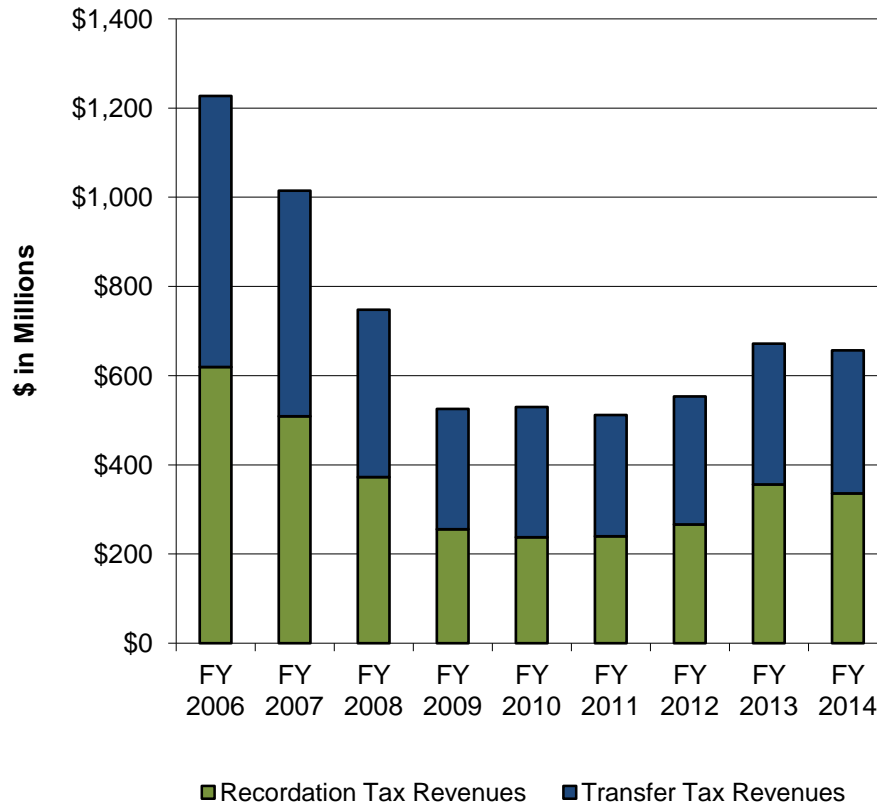
FY 2006	\$6,200.2	9.5%
FY 2007	6,679.2	7.7%
FY 2008	6,940.1	3.9%
FY 2009	6,477.2	-6.7%
FY 2010	6,178.2	-4.6%
FY 2011	6,643.4	7.5%
FY 2012	7,114.7	7.1%
FY 2013	7,691.4	8.1%
FY 2014	8,072.8	5.0%
FY 2015	8,446.5	4.6%

Additional Revenue Yield from Imposing Maximum County Income Tax Rate Fiscal 2014 – Projected Revenues

County	Population	County Income Tax Revenues	County Income Tax Rate	Potential Rate Increase	Additional Revenue Yield	Per Capita Amount
Allegany	74,012	\$24,534,600	3.05%	0.15%	\$1,206,600	\$16.30
Anne Arundel	550,488	417,300,000	2.56%	0.64%	104,325,000	189.51
Baltimore City	621,342	274,386,334	3.20%	0.00%	0	0.00
Baltimore	817,455	604,292,819	2.83%	0.37%	79,006,500	96.65
Calvert	89,628	71,723,000	2.80%	0.40%	10,246,100	114.32
Caroline	32,718	10,800,000	2.73%	0.47%	1,859,300	56.83
Carroll	167,217	133,803,415	3.04%	0.16%	7,042,300	42.11
Cecil	101,696	52,139,853	2.80%	0.40%	7,448,600	73.24
Charles	150,592	106,240,200	3.03%	0.17%	5,960,700	39.58
Dorchester	32,551	9,809,329	2.62%	0.58%	2,171,500	66.71
Frederick	239,582	176,363,100	2.96%	0.24%	14,299,700	59.69
Garrett	29,854	11,125,000	2.65%	0.55%	2,309,000	77.34
Harford	248,622	190,600,000	3.06%	0.14%	8,720,300	35.07
Howard	299,430	370,000,000	3.20%	0.00%	0	0.00
Kent	20,191	10,800,000	2.85%	0.35%	1,326,300	65.69
Montgomery	1,004,709	1,299,191,344	3.20%	0.00%	0	0.00
Prince George's	881,138	509,066,400	3.20%	0.00%	0	0.00
Queen Anne's	48,595	38,984,963	3.20%	0.00%	0	0.00
St. Mary's	108,987	82,000,000	3.00%	0.20%	5,466,700	50.16
Somerset	26,253	6,100,000	3.15%	0.05%	96,800	3.69
Talbot	38,098	26,000,000	2.40%	0.80%	8,666,700	227.48
Washington	149,180	68,730,000	2.80%	0.40%	9,818,600	65.82
Wicomico	100,647	42,593,604	3.20%	0.00%	0	0.00
Worcester	51,578	12,200,000	1.25%	1.95%	19,032,000	368.99
Total	5,884,563	\$4,548,783,961			\$289,002,700	\$49.11

Source: Department of Legislative Services

Real Estate Meltdown Impacts Recordation and Transfer Taxes



Local Recordation Tax Revenues (\$ in Millions)

FY 2006	\$619.0	17.8%
FY 2007	508.5	-17.8%
FY 2008	372.3	-26.8%
FY 2009	255.6	-31.3%
FY 2010	237.9	-6.9%
FY 2011	239.6	0.7%
FY 2012	266.2	11.1%
FY 2013	356.0	33.7%
FY 2014	335.8	-5.7%

Local Transfer Tax Revenues (\$ in Millions)

FY 2006	\$607.8	18.8%
FY 2007	506.2	-16.7%
FY 2008	375.1	-25.9%
FY 2009	269.5	-28.2%
FY 2010	291.6	8.2%
FY 2011	272.1	-6.7%
FY 2012	286.8	5.4%
FY 2013	315.3	9.9%
FY 2014	321.0	1.8%

Source: Department of Legislative Services, County Budgets

Appendix 1

County Government Revenues – Fiscal 2012

<u>County</u>	<u>Property Tax</u>	<u>Income Tax</u>	<u>Recordation Tax</u>	<u>Transfer Tax</u>	<u>Hotel/Motel Tax</u>	<u>Admissions/ Amusement Tax</u>	<u>Other Local Taxes</u>	<u>Total Local Taxes</u>	<u>Total GF Revenues</u>
Allegany	\$42,049,578	\$24,854,127	\$1,081,251	\$342,354	\$595,446	\$143,733	\$555,341	\$69,621,830	\$82,963,640
Anne Arundel	567,829,147	394,480,856	28,553,925	30,534,488	13,683,787	9,024,945	18,574,439	1,062,681,587	1,188,526,175
Baltimore City	770,250,847	257,892,892	20,132,491	22,840,024	32,559,735	7,581,026	87,801,496	1,199,058,511	1,586,751,791
Baltimore	845,238,303	593,204,019	20,397,974	43,517,262	8,231,811	5,502,804	29,518,066	1,545,610,239	1,586,583,232
Calvert	146,449,619	64,199,044	5,180,576	0	753,981	30,938	127,458	216,741,616	237,557,042
Caroline	23,932,023	11,088,210	977,234	304,602	31,829	0	211,550	36,545,448	41,994,001
Carroll	203,651,235	128,967,957	8,520,674	0	298,970	296,890	1,056,388	342,792,114	367,577,491
Cecil	102,147,108	49,813,198	3,576,107	20,530	75,924	133,864	405,612	156,172,343	165,481,533
Charles	195,722,484	97,179,582	8,462,994	0	1,066,852	717,119	0	303,149,031	353,868,856
Dorchester	31,155,678	10,767,858	1,312,175	646,940	395,024	478	283,571	44,561,724	50,589,762
Frederick	282,116,563	169,760,329	16,900,106	0	1,203,918	810,890	1,579,041	472,370,847	447,473,818
Garrett	47,490,734	10,808,277	2,113,050	1,239,497	1,752,381	685,707	543,107	64,632,753	78,350,466
Harford	294,566,509	179,177,637	9,088,761	9,786,317	0	506,174	0	493,125,398	483,752,141
Howard	503,063,730	357,346,674	15,944,953	25,801,012	4,221,636	2,394,199	577,243	909,349,447	865,282,993
Kent	30,405,080	10,335,245	831,372	373,324	118,179	14,502	130,687	42,208,389	44,065,647
Montgomery	1,447,857,234	1,255,089,822	75,746,277	77,178,181	18,167,827	2,554,295	272,618,979	3,149,212,615	2,809,053,358
Prince George's	719,136,540	485,231,677	22,774,565	62,294,438	5,373,688	10,436,967	97,512,922	1,402,760,797	1,601,559,808
Queen Anne's	64,724,361	35,969,879	3,809,545	1,266,716	468,382	183,634	0	106,422,517	112,035,722
St. Mary's	100,050,654	76,289,036	4,692,275	4,151,361	832,266	121,047	2,356,217	188,492,856	206,371,929
Somerset	15,355,665	6,246,160	347,707	0	50,551	24,099	0	22,024,182	33,242,957
Talbot	30,002,020	20,269,343	4,636,327	2,602,845	1,105,272	43,971	61,065	58,720,843	64,591,004
Washington	122,689,802	64,578,939	3,556,946	1,331,163	1,817,880	319,859	475,065	194,769,654	207,499,671
Wicomico	58,468,272	41,845,360	2,230,158	0	1,039,997	84,459	912,747	104,580,993	113,857,298
Worcester	121,243,588	12,900,072	5,328,454	2,595,376	13,262,770	590,148	1,334,681	157,255,089	172,293,191
Total	\$6,765,596,774	\$4,358,296,193	\$266,195,897	\$286,826,430	\$107,108,106	\$42,201,748	\$516,635,675	\$12,342,860,823	\$12,901,323,526

Note: Property tax revenues for Charles, Frederick, and Howard counties include special fire district tax. Property tax revenues for Montgomery County include special fire, mass transit, and recreation district taxes.

Source: Department of Legislative Services, County Budgets

Appendix 2

County Government Revenues – Fiscal 2013

<u>County</u>	<u>Property Tax</u>	<u>Income Tax</u>	<u>Recordation Tax</u>	<u>Transfer Tax</u>	<u>Hotel/Motel Tax</u>	<u>Admissions/ Amusement Tax</u>	<u>Other Local Taxes</u>	<u>Total Local Taxes</u>	<u>Total GF Revenues</u>
Allegany	\$41,631,193	\$24,249,252	\$1,692,145	\$300,696	\$787,579	\$250,168	\$566,620	\$69,477,653	\$84,815,243
Anne Arundel	587,532,000	401,400,000	39,000,000	38,000,000	13,700,000	8,800,000	18,670,000	1,107,102,000	1,255,428,300
Baltimore City	769,512,000	267,365,960	28,645,000	23,371,000	29,600,000	8,750,000	88,723,141	1,215,967,101	1,593,563,204
Baltimore	854,651,204	607,429,599	30,000,000	50,000,000	8,507,153	5,456,966	28,777,669	1,584,822,591	1,657,479,154
Calvert	140,969,187	65,091,797	5,909,376	0	634,973	29,720	237,928	212,872,981	224,944,199
Caroline	24,106,972	11,103,026	1,301,909	377,400	44,715	0	229,103	37,163,125	43,151,824
Carroll	198,243,342	127,555,768	10,021,395	0	279,550	288,173	1,054,462	337,442,690	374,491,438
Cecil	104,661,472	50,421,108	5,535,807	23,946	88,585	130,424	432,163	161,293,505	170,250,269
Charles	200,012,954	99,440,598	11,104,089	0	987,960	796,989	0	312,342,590	314,916,843
Dorchester	31,969,716	9,692,631	1,434,291	619,002	291,432	445	331,732	44,339,249	50,166,947
Frederick	261,627,970	176,068,392	24,339,679	0	1,221,602	525,352	1,486,422	465,269,417	436,939,486
Garrett	48,312,114	11,000,000	2,300,000	1,375,000	1,900,000	700,000	511,000	66,098,114	82,746,275
Harford	286,910,662	184,160,982	10,699,395	10,854,826	0	533,606	0	493,159,471	462,951,853
Howard	527,378,634	374,358,094	21,837,593	25,253,440	4,404,564	2,136,733	598,508	955,967,566	914,349,959
Kent	30,174,622	11,047,174	962,237	451,355	125,535	10,404	129,941	42,901,268	45,245,136
Montgomery	1,470,949,276	1,331,386,818	103,878,439	85,409,701	18,629,000	2,946,500	264,478,000	3,277,677,734	2,877,248,943
Prince George's	693,263,100	497,429,000	27,563,300	66,661,700	5,373,700	10,645,700	93,352,800	1,394,289,300	1,571,232,300
Queen Anne's	65,651,274	39,438,906	4,614,108	1,351,064	470,139	160,516	0	111,686,007	117,850,100
St. Mary's	100,809,676	76,746,270	5,688,996	4,268,826	872,433	84,269	2,443,828	190,914,298	200,585,091
Somerset	14,623,206	6,035,956	437,714	0	56,867	15,975	0	21,169,718	30,776,426
Talbot	32,876,624	23,500,000	4,900,000	2,600,000	1,150,000	40,000	63,000	65,129,624	70,236,959
Washington	123,609,730	65,763,209	5,213,999	1,484,247	1,876,044	308,149	461,752	198,717,130	216,899,193
Wicomico	60,006,246	40,472,224	2,249,756	0	1,090,134	107,040	906,000	104,831,400	116,690,266
Worcester	121,348,615	12,676,852	6,648,659	2,912,622	13,632,597	481,879	1,371,584	159,072,808	172,654,236
Total	\$6,790,831,789	\$4,513,833,616	\$355,977,887	\$315,314,825	\$105,724,562	\$43,199,008	\$504,825,653	\$12,629,707,340	\$13,085,613,644

Note: Property tax revenues for Charles, Frederick, and Howard counties include special fire district tax. Property tax revenues for Montgomery County include special fire, mass transit, and recreation district taxes.

Source: Department of Legislative Services, County Budgets

Appendix 3

County Government Revenues – Fiscal 2014

<u>County</u>	<u>Property Tax</u>	<u>Income Tax</u>	<u>Recordation Tax</u>	<u>Transfer Tax</u>	<u>Hotel/Motel Tax</u>	<u>Admissions/ Amusement Tax</u>	<u>Other Local Taxes</u>	<u>Total Local Taxes</u>	<u>Total GF Revenues</u>
Allegany	\$41,131,229	\$24,534,600	\$1,050,000	\$350,000	\$948,125	\$200,000	\$592,000	\$68,805,954	\$82,667,432
Anne Arundel	602,719,000	417,300,000	36,500,000	36,500,000	13,670,000	8,980,000	18,700,000	1,134,369,000	1,319,796,400
Baltimore City	754,959,199	274,386,334	23,367,000	24,948,000	28,497,000	8,653,000	86,047,928	1,200,858,461	1,616,876,679
Baltimore	860,143,219	604,292,819	25,500,000	52,000,000	8,850,000	5,259,948	28,530,253	1,584,576,239	1,724,591,528
Calvert	137,227,392	71,723,000	6,000,000	0	810,000	30,000	120,000	215,910,392	232,501,583
Caroline	24,442,955	10,800,000	1,100,000	210,842	45,000	0	211,000	36,809,797	42,638,761
Carroll	195,668,370	133,803,415	9,750,000	0	290,720	309,000	1,018,540	340,840,045	367,060,000
Cecil	101,764,411	52,139,853	4,800,000	20,000	75,000	135,000	415,000	159,349,264	173,532,772
Charles	212,432,300	106,240,200	10,500,000	0	1,067,000	865,000	0	331,104,500	339,071,600
Dorchester	30,154,734	9,809,329	1,534,386	650,000	330,000	1,000	275,000	42,754,449	50,221,773
Frederick	263,838,803	176,363,100	22,453,062	0	1,204,000	0	1,494,800	465,353,765	516,297,070
Garrett	48,378,651	11,125,000	2,000,000	1,150,000	1,900,000	660,000	521,100	65,734,751	78,368,128
Harford	284,472,646	190,600,000	10,200,510	9,600,000	0	506,500	0	495,379,656	496,925,918
Howard	540,722,652	370,000,000	20,098,864	27,000,000	4,200,000	2,200,000	580,000	964,801,516	969,839,219
Kent	30,267,675	10,800,000	1,010,000	580,000	118,500	10,800	140,000	42,926,975	44,844,399
Montgomery	1,514,487,152	1,299,191,344	103,658,874	86,684,000	17,752,800	3,043,200	255,853,982	3,280,671,352	2,909,962,063
Prince George's	693,725,100	509,066,400	28,391,400	68,664,800	5,481,200	10,803,000	88,832,600	1,404,964,500	1,552,321,000
Queen Anne's	62,739,716	38,984,963	3,820,000	1,650,000	435,000	176,750	0	107,806,429	113,924,180
St. Mary's	101,669,371	82,000,000	5,100,000	4,350,000	850,000	100,000	2,540,000	196,609,371	222,665,317
Somerset	14,470,866	6,100,000	350,000	0	55,000	24,000	0	20,999,866	37,289,382
Talbot	33,293,000	26,000,000	5,050,000	2,500,000	1,250,000	40,000	63,000	68,196,000	72,450,000
Washington	119,215,860	68,730,000	5,000,000	1,400,000	2,000,000	300,000	470,000	197,115,860	201,189,270
Wicomico	61,683,755	42,593,604	2,516,123	0	1,047,289	85,000	925,116	108,850,887	127,677,324
Worcester	117,680,468	12,200,000	6,000,000	2,750,000	11,250,000	560,000	1,150,000	151,590,468	168,643,654
Total	\$6,847,288,524	\$4,548,783,961	\$335,750,219	\$321,007,642	\$102,126,634	\$42,942,198	\$488,480,319	\$12,686,379,497	\$13,461,355,452

Note: Property tax revenues for Charles and Howard counties include special fire district tax. Property tax revenues for Montgomery County include special fire, mass transit, and recreation district taxes.

Source: Department of Legislative Services, County Budgets

Appendix 4

Property Tax Revenue Trend for Fiscal 2012-2014

County	FY 2012	FY 2013	FY 2014	FY 2012-2013 \$ Difference	FY 2013-2014 \$ Difference	Average Annual Difference
Allegany	\$42,049,578	\$41,631,193	\$41,131,229	-\$418,385	-\$499,964	-1.1%
Anne Arundel	567,829,147	587,532,000	602,719,000	19,702,853	15,187,000	3.0%
Baltimore City	770,250,847	769,512,000	754,959,199	-738,847	-14,552,801	-1.0%
Baltimore	845,238,303	854,651,204	860,143,219	9,412,901	5,492,015	0.9%
Calvert	146,449,619	140,969,187	137,227,392	-5,480,432	-3,741,795	-3.2%
Caroline	23,932,023	24,106,972	24,442,955	174,949	335,983	1.1%
Carroll	203,651,235	198,243,342	195,668,370	-5,407,893	-2,574,972	-2.0%
Cecil	102,147,108	104,661,472	101,764,411	2,514,364	-2,897,061	-0.2%
Charles	195,722,484	200,012,954	212,432,300	4,290,470	12,419,346	4.2%
Dorchester	31,155,678	31,969,716	30,154,734	814,038	-1,814,982	-1.6%
Frederick	282,116,563	261,627,970	263,838,803	-20,488,593	2,210,833	-3.3%
Garrett	47,490,734	48,312,114	48,378,651	821,380	66,537	0.9%
Harford	294,566,509	286,910,662	284,472,646	-7,655,847	-2,438,016	-1.7%
Howard	503,063,730	527,378,634	540,722,652	24,314,904	13,344,018	3.7%
Kent	30,405,080	30,174,622	30,267,675	-230,458	93,053	-0.2%
Montgomery	1,447,857,234	1,470,949,276	1,514,487,152	23,092,042	43,537,876	2.3%
Prince George's	719,136,540	693,263,100	693,725,100	-25,873,440	462,000	-1.8%
Queen Anne's	64,724,361	65,651,274	62,739,716	926,913	-2,911,558	-1.5%
St. Mary's	100,050,654	100,809,676	101,669,371	759,022	859,695	0.8%
Somerset	15,355,665	14,623,206	14,470,866	-732,459	-152,340	-2.9%
Talbot	30,002,020	32,876,624	33,293,000	2,874,604	416,376	5.3%
Washington	122,689,802	123,609,730	119,215,860	919,928	-4,393,870	-1.4%
Wicomico	58,468,272	60,006,246	61,683,755	1,537,974	1,677,509	2.7%
Worcester	121,243,588	121,348,615	117,680,468	105,027	-3,668,147	-1.5%
Total	\$6,765,596,774	\$6,790,831,789	\$6,847,288,524	\$25,235,015	\$56,456,735	0.6%

Note: Property tax revenues for Charles, Frederick, and Howard counties include special fire district tax. Property tax revenues for Montgomery County include special fire, mass transit, and recreation district taxes.

Source: Department of Legislative Services, County Budgets

Appendix 5

Local Income Tax Revenue Trend for Fiscal 2012-2014

County	FY 2012	FY 2013	FY 2014	FY 2012-2013 \$ Difference	FY 2013-2014 \$ Difference	Average Annual Difference
Allegany	\$24,854,127	\$24,249,252	\$24,534,600	-\$604,875	\$285,348	-0.6%
Anne Arundel	394,480,856	401,400,000	417,300,000	6,919,144	15,900,000	2.9%
Baltimore City	257,892,892	267,365,960	274,386,334	9,473,068	7,020,374	3.1%
Baltimore	593,204,019	607,429,599	604,292,819	14,225,580	-3,136,780	0.9%
Calvert	64,199,044	65,091,797	71,723,000	892,753	6,631,203	5.7%
Caroline	11,088,210	11,103,026	10,800,000	14,816	-303,026	-1.3%
Carroll	128,967,957	127,555,768	133,803,415	-1,412,189	6,247,647	1.9%
Cecil	49,813,198	50,421,108	52,139,853	607,910	1,718,745	2.3%
Charles	97,179,582	99,440,598	106,240,200	2,261,016	6,799,602	4.6%
Dorchester	10,767,858	9,692,631	9,809,329	-1,075,227	116,698	-4.6%
Frederick	169,760,329	176,068,392	176,363,100	6,308,063	294,708	1.9%
Garrett	10,808,277	11,000,000	11,125,000	191,723	125,000	1.5%
Harford	179,177,637	184,160,982	190,600,000	4,983,345	6,439,018	3.1%
Howard	357,346,674	374,358,094	370,000,000	17,011,420	-4,358,094	1.8%
Kent	10,335,245	11,047,174	10,800,000	711,929	-247,174	2.2%
Montgomery	1,255,089,822	1,331,386,818	1,299,191,344	76,296,996	-32,195,474	1.7%
Prince George's	485,231,677	497,429,000	509,066,400	12,197,323	11,637,400	2.4%
Queen Anne's	35,969,879	39,438,906	38,984,963	3,469,027	-453,943	4.1%
St. Mary's	76,289,036	76,746,270	82,000,000	457,234	5,253,730	3.7%
Somerset	6,246,160	6,035,956	6,100,000	-210,204	64,044	-1.2%
Talbot	20,269,343	23,500,000	26,000,000	3,230,657	2,500,000	13.3%
Washington	64,578,939	65,763,209	68,730,000	1,184,270	2,966,791	3.2%
Wicomico	41,845,360	40,472,224	42,593,604	-1,373,136	2,121,380	0.9%
Worcester	12,900,072	12,676,852	12,200,000	-223,220	-476,852	-2.8%
Total	\$4,358,296,193	\$4,513,833,616	\$4,548,783,961	\$155,537,423	\$34,950,345	2.2%

Source: Department of Legislative Services, County Budgets

Appendix 6

Recordation Tax Revenue Trend for Fiscal 2012-2014

County	FY 2012	FY 2013	FY 2014	FY 2012-2013 \$ Difference	FY 2013-2014 \$ Difference	Average Annual Difference
Allegany	\$1,081,251	\$1,692,145	\$1,050,000	\$610,894	-\$642,145	-1.5%
Anne Arundel	28,553,925	39,000,000	36,500,000	10,446,075	-2,500,000	13.1%
Baltimore City	20,132,491	28,645,000	23,367,000	8,512,509	-5,278,000	7.7%
Baltimore	20,397,974	30,000,000	25,500,000	9,602,026	-4,500,000	11.8%
Calvert	5,180,576	5,909,376	6,000,000	728,800	90,624	7.6%
Caroline	977,234	1,301,909	1,100,000	324,675	-201,909	6.1%
Carroll	8,520,674	10,021,395	9,750,000	1,500,721	-271,395	7.0%
Cecil	3,576,107	5,535,807	4,800,000	1,959,700	-735,807	15.9%
Charles	8,462,994	11,104,089	10,500,000	2,641,095	-604,089	11.4%
Dorchester	1,312,175	1,434,291	1,534,386	122,116	100,095	8.1%
Frederick	16,900,106	24,339,679	22,453,062	7,439,573	-1,886,617	15.3%
Garrett	2,113,050	2,300,000	2,000,000	186,950	-300,000	-2.7%
Harford	9,088,761	10,699,395	10,200,510	1,610,634	-498,885	5.9%
Howard	15,944,953	21,837,593	20,098,864	5,892,640	-1,738,729	12.3%
Kent	831,372	962,237	1,010,000	130,865	47,763	10.2%
Montgomery	75,746,277	103,878,439	103,658,874	28,132,162	-219,565	17.0%
Prince George's	22,774,565	27,563,300	28,391,400	4,788,735	828,100	11.7%
Queen Anne's	3,809,545	4,614,108	3,820,000	804,563	-794,108	0.1%
St. Mary's	4,692,275	5,688,996	5,100,000	996,721	-588,996	4.3%
Somerset	347,707	437,714	350,000	90,007	-87,714	0.3%
Talbot	4,636,327	4,900,000	5,050,000	263,673	150,000	4.4%
Washington	3,556,946	5,213,999	5,000,000	1,657,053	-213,999	18.6%
Wicomico	2,230,158	2,249,756	2,516,123	19,598	266,367	6.2%
Worcester	5,328,454	6,648,659	6,000,000	1,320,205	-648,659	6.1%
Total	\$266,195,897	\$355,977,887	\$335,750,219	\$89,781,990	-\$20,227,668	12.3%

Source: Department of Legislative Services, County Budgets

Appendix 7

Transfer Tax Revenue Trend for Fiscal 2012-2014

County	FY 2012	FY 2013	FY 2014	FY 2012-2013 \$ Difference	FY 2013-2014 \$ Difference	Average Annual Difference
Allegany	\$342,354	\$300,696	\$350,000	-\$41,658	\$49,304	1.1%
Anne Arundel	30,534,488	38,000,000	36,500,000	7,465,512	-1,500,000	9.3%
Baltimore City	22,840,024	23,371,000	24,948,000	530,976	1,577,000	4.5%
Baltimore	43,517,262	50,000,000	52,000,000	6,482,738	2,000,000	9.3%
Calvert	0	0	0	0	0	N/A
Caroline	304,602	377,400	210,842	72,798	-166,558	-16.8%
Carroll	0	0	0	0	0	N/A
Cecil	20,530	23,946	20,000	3,416	-3,946	-1.3%
Charles	0	0	0	0	0	N/A
Dorchester	646,940	619,002	650,000	-27,938	30,998	0.2%
Frederick	0	0	0	0	0	N/A
Garrett	1,239,497	1,375,000	1,150,000	135,503	-225,000	-3.7%
Harford	9,786,317	10,854,826	9,600,000	1,068,509	-1,254,826	-1.0%
Howard	25,801,012	25,253,440	27,000,000	-547,572	1,746,560	2.3%
Kent	373,324	451,355	580,000	78,031	128,645	24.6%
Montgomery	77,178,181	85,409,701	86,684,000	8,231,520	1,274,299	6.0%
Prince George's	62,294,438	66,661,700	68,664,800	4,367,262	2,003,100	5.0%
Queen Anne's	1,266,716	1,351,064	1,650,000	84,348	298,936	14.1%
St. Mary's	4,151,361	4,268,826	4,350,000	117,465	81,174	2.4%
Somerset	0	0	0	0	0	N/A
Talbot	2,602,845	2,600,000	2,500,000	-2,845	-100,000	-2.0%
Washington	1,331,163	1,484,247	1,400,000	153,084	-84,247	2.6%
Wicomico	0	0	0	0	0	N/A
Worcester	2,595,376	2,912,622	2,750,000	317,246	-162,622	2.9%
Total	\$286,826,430	\$315,314,825	\$321,007,642	\$28,488,395	\$5,692,817	5.8%

Source: Department of Legislative Services, County Budgets

Appendix 8

Hotel/Motel Tax Revenue Trend for Fiscal 2012-2014

County	FY 2012	FY 2013	FY 2014	FY 2012-2013 \$ Difference	FY 2013-2014 \$ Difference	Average Annual Difference
Allegany	\$595,446	\$787,579	\$948,125	\$192,133	\$160,546	26.2%
Anne Arundel	13,683,787	13,700,000	13,670,000	16,213	-30,000	-0.1%
Baltimore City	32,559,735	29,600,000	28,497,000	-2,959,735	-1,103,000	-6.4%
Baltimore	8,231,811	8,507,153	8,850,000	275,342	342,847	3.7%
Calvert	753,981	634,973	810,000	-119,008	175,027	3.6%
Caroline	31,829	44,715	45,000	12,886	285	18.9%
Carroll	298,970	279,550	290,720	-19,420	11,170	-1.4%
Cecil	75,924	88,585	75,000	12,661	-13,585	-0.6%
Charles	1,066,852	987,960	1,067,000	-78,892	79,040	0.0%
Dorchester	395,024	291,432	330,000	-103,592	38,568	-8.6%
Frederick	1,203,918	1,221,602	1,204,000	17,684	-17,602	0.0%
Garrett	1,752,381	1,900,000	1,900,000	147,619	0	4.1%
Harford	0	0	0	0	0	N/A
Howard	4,221,636	4,404,564	4,200,000	182,928	-204,564	-0.3%
Kent	118,179	125,535	118,500	7,356	-7,035	0.1%
Montgomery	18,167,827	18,629,000	17,752,800	461,173	-876,200	-1.1%
Prince George's	5,373,688	5,373,700	5,481,200	12	107,500	1.0%
Queen Anne's	468,382	470,139	435,000	1,757	-35,139	-3.6%
St. Mary's	832,266	872,433	850,000	40,167	-22,433	1.1%
Somerset	50,551	56,867	55,000	6,316	-1,867	4.3%
Talbot	1,105,272	1,150,000	1,250,000	44,728	100,000	6.3%
Washington	1,817,880	1,876,044	2,000,000	58,164	123,956	4.9%
Wicomico	1,039,997	1,090,134	1,047,289	50,137	-42,845	0.3%
Worcester	13,262,770	13,632,597	11,250,000	369,827	-2,382,597	-7.9%
Total	\$107,108,106	\$105,724,562	\$102,126,634	-\$1,383,544	-\$3,597,928	-2.4%

Source: Department of Legislative Services, County Budgets

Appendix 9

Admissions and Amusement Tax Revenue Trend for Fiscal 2012-2014

County	FY 2012	FY 2013	FY 2014	FY 2012-2013 \$ Difference	FY 2013-2014 \$ Difference	Average Annual Difference
Allegany	\$143,733	\$250,168	\$200,000	\$106,435	-\$50,168	18.0%
Anne Arundel	9,024,945	8,800,000	8,980,000	-224,945	180,000	-0.2%
Baltimore City	7,581,026	8,750,000	8,653,000	1,168,974	-97,000	6.8%
Baltimore	5,502,804	5,456,966	5,259,948	-45,838	-197,018	-2.2%
Calvert	30,938	29,720	30,000	-1,218	280	-1.5%
Caroline	0	0	0	0	0	N/A
Carroll	296,890	288,173	309,000	-8,717	20,827	2.0%
Cecil	133,864	130,424	135,000	-3,440	4,576	0.4%
Charles	717,119	796,989	865,000	79,870	68,011	9.8%
Dorchester	478	445	1,000	-33	555	44.6%
Frederick	810,890	525,352	0	-285,538	-525,352	-100.0%
Garrett	685,707	700,000	660,000	14,293	-40,000	-1.9%
Harford	506,174	533,606	506,500	27,432	-27,106	0.0%
Howard	2,394,199	2,136,733	2,200,000	-257,466	63,267	-4.1%
Kent	14,502	10,404	10,800	-4,098	396	-13.7%
Montgomery	2,554,295	2,946,500	3,043,200	392,205	96,700	9.2%
Prince George's	10,436,967	10,645,700	10,803,000	208,733	157,300	1.7%
Queen Anne's	183,634	160,516	176,750	-23,118	16,234	-1.9%
St. Mary's	121,047	84,269	100,000	-36,778	15,731	-9.1%
Somerset	24,099	15,975	24,000	-8,124	8,025	-0.2%
Talbot	43,971	40,000	40,000	-3,971	0	-4.6%
Washington	319,859	308,149	300,000	-11,710	-8,149	-3.2%
Wicomico	84,459	107,040	85,000	22,581	-22,040	0.3%
Worcester	590,148	481,879	560,000	-108,269	78,121	-2.6%
Total	\$42,201,748	\$43,199,008	\$42,942,198	\$997,260	-\$256,810	0.9%

Source: Department of Legislative Services, County Budgets

Appendix 10

Total Local Taxes for Fiscal 2012-2014

County	FY 2012	FY 2013	FY 2014	FY 2012-2013 \$ Difference	FY 2013-2014 \$ Difference	Average Annual Difference
Allegany	\$69,621,830	\$69,477,653	\$68,805,954	-\$144,177	-\$671,699	-0.6%
Anne Arundel	1,062,681,587	1,107,102,000	1,134,369,000	44,420,413	27,267,000	3.3%
Baltimore City	1,199,058,511	1,215,967,101	1,200,858,461	16,908,590	-15,108,640	0.1%
Baltimore	1,545,610,239	1,584,822,591	1,584,576,239	39,212,352	-246,352	1.3%
Calvert	216,741,616	212,872,981	215,910,392	-3,868,635	3,037,411	-0.2%
Caroline	36,545,448	37,163,125	36,809,797	617,677	-353,328	0.4%
Carroll	342,792,114	337,442,690	340,840,045	-5,349,424	3,397,355	-0.3%
Cecil	156,172,343	161,293,505	159,349,264	5,121,162	-1,944,241	1.0%
Charles	303,149,031	312,342,590	331,104,500	9,193,559	18,761,910	4.5%
Dorchester	44,561,724	44,339,249	42,754,449	-222,475	-1,584,800	-2.0%
Frederick	472,370,847	465,269,417	465,353,765	-7,101,430	84,348	-0.7%
Garrett	64,632,753	66,098,114	65,734,751	1,465,361	-363,363	0.8%
Harford	493,125,398	493,159,471	495,379,656	34,073	2,220,185	0.2%
Howard	909,349,447	955,967,566	964,801,516	46,618,119	8,833,950	3.0%
Kent	42,208,389	42,901,268	42,926,975	692,879	25,707	0.8%
Montgomery	3,149,212,615	3,277,677,734	3,280,671,352	128,465,119	2,993,618	2.1%
Prince George's	1,402,760,797	1,394,289,300	1,404,964,500	-8,471,497	10,675,200	0.1%
Queen Anne's	106,422,517	111,686,007	107,806,429	5,263,490	-3,879,578	0.6%
St. Mary's	188,492,856	190,914,298	196,609,371	2,421,442	5,695,073	2.1%
Somerset	22,024,182	21,169,718	20,999,866	-854,464	-169,852	-2.4%
Talbot	58,720,843	65,129,624	68,196,000	6,408,781	3,066,376	7.8%
Washington	194,769,654	198,717,130	197,115,860	3,947,476	-1,601,270	0.6%
Wicomico	104,580,993	104,831,400	108,850,887	250,407	4,019,487	2.0%
Worcester	157,255,089	159,072,808	151,590,468	1,817,719	-7,482,340	-1.8%
Total	\$12,342,860,823	\$12,629,707,340	\$12,686,379,497	\$286,846,517	\$56,672,157	1.4%

Source: Department of Legislative Services, County Budgets

Appendix 11

Total General Fund Revenues for Fiscal 2012-2014

County	FY 2012	FY 2013	FY 2014	FY 2012-2013 \$ Difference	FY 2013-2014 \$ Difference	Average Annual Difference
Allegany	\$82,963,640	\$84,815,243	\$82,667,432	\$1,851,603	-\$2,147,811	-0.2%
Anne Arundel	1,188,526,175	1,255,428,300	1,319,796,400	66,902,125	64,368,100	5.4%
Baltimore City	1,586,751,791	1,593,563,204	1,616,876,679	6,811,413	23,313,475	0.9%
Baltimore	1,586,583,232	1,657,479,154	1,724,591,528	70,895,922	67,112,374	4.3%
Calvert	237,557,042	224,944,199	232,501,583	-12,612,843	7,557,384	-1.1%
Caroline	41,994,001	43,151,824	42,638,761	1,157,823	-513,063	0.8%
Carroll	367,577,491	374,491,438	367,060,000	6,913,947	-7,431,438	-0.1%
Cecil	165,481,533	170,250,269	173,532,772	4,768,736	3,282,503	2.4%
Charles	353,868,856	314,916,843	339,071,600	-38,952,013	24,154,757	-2.1%
Dorchester	50,589,762	50,166,947	50,221,773	-422,815	54,826	-0.4%
Frederick	447,473,818	436,939,486	516,297,070	-10,534,332	79,357,584	7.4%
Garrett	78,350,466	82,746,275	78,368,128	4,395,809	-4,378,147	0.0%
Harford	483,752,141	462,951,853	496,925,918	-20,800,288	33,974,065	1.4%
Howard	865,282,993	914,349,959	969,839,219	49,066,966	55,489,260	5.9%
Kent	44,065,647	45,245,136	44,844,399	1,179,489	-400,737	0.9%
Montgomery	2,809,053,358	2,877,248,943	2,909,962,063	68,195,585	32,713,120	1.8%
Prince George's	1,601,559,808	1,571,232,300	1,552,321,000	-30,327,508	-18,911,300	-1.5%
Queen Anne's	112,035,722	117,850,100	113,924,180	5,814,378	-3,925,920	0.8%
St. Mary's	206,371,929	200,585,091	222,665,317	-5,786,838	22,080,226	3.9%
Somerset	33,242,957	30,776,426	37,289,382	-2,466,531	6,512,956	5.9%
Talbot	64,591,004	70,236,959	72,450,000	5,645,955	2,213,041	5.9%
Washington	207,499,671	216,899,193	201,189,270	9,399,522	-15,709,923	-1.5%
Wicomico	113,857,298	116,690,266	127,677,324	2,832,968	10,987,058	5.9%
Worcester	172,293,191	172,654,236	168,643,654	361,045	-4,010,582	-1.1%
Total	\$12,901,323,526	\$13,085,613,644	\$13,461,355,452	\$184,290,118	\$375,741,808	2.1%

Source: Department of Legislative Services, County Budgets

Appendix 12

County Assessable Base – Real Property Tax Base

(\$ in Thousands)

County	FY 2007	FY 2008	FY 2009	FY 2010	FY 2011	FY 2012	FY 2013	FY 2014	FY 2015 E	FY 2016 E
Allegany	\$2,586,972	\$2,846,492	\$3,065,071	\$3,484,452	\$3,672,486	\$3,671,981	\$3,624,666	\$3,579,448	\$3,545,660	\$3,475,220
Anne Arundel	58,289,078	69,284,375	79,234,802	84,100,226	82,254,827	76,998,283	73,705,939	73,865,355	74,850,791	76,350,799
Baltimore City	23,270,049	27,026,288	31,476,196	36,152,390	37,123,845	35,496,276	33,133,118	32,548,629	32,705,058	31,249,546
Baltimore	59,388,359	69,109,693	78,638,141	85,888,670	86,294,582	81,261,214	77,724,847	75,469,078	75,122,885	75,054,201
Calvert	8,627,574	10,627,594	12,450,810	13,459,525	13,316,625	12,425,111	11,678,345	11,334,235	11,274,112	11,361,679
Caroline	1,998,513	2,370,861	2,765,323	3,095,753	3,079,802	2,846,998	2,705,356	2,550,357	2,489,170	2,456,942
Carroll	14,928,927	17,379,874	19,772,165	21,539,976	20,353,779	19,143,906	18,269,133	17,999,418	17,900,675	18,107,732
Cecil	7,538,061	8,813,334	10,080,287	10,800,442	10,767,002	10,177,098	9,586,913	9,280,440	9,255,708	9,300,768
Charles	12,412,526	15,121,431	17,610,478	18,938,637	17,941,362	16,687,708	15,809,223	15,414,254	15,330,100	15,760,113
Dorchester	2,266,874	2,695,155	3,102,840	3,391,676	3,416,216	3,108,058	3,001,778	2,861,600	2,793,431	2,726,413
Frederick	21,956,977	26,254,477	29,825,708	31,678,985	29,464,122	26,861,626	25,596,214	25,433,656	25,593,206	25,696,891
Garrett	3,272,030	3,764,637	4,232,240	4,573,168	4,858,041	4,846,248	4,636,840	4,621,273	4,249,684	4,260,670
Harford	18,994,224	21,990,003	25,200,084	27,465,303	27,595,623	26,409,869	25,821,377	25,569,637	24,952,283	25,452,305
Howard	34,805,181	40,562,971	46,143,463	48,528,784	46,468,365	43,424,892	42,459,610	42,755,118	43,510,549	43,671,007
Kent	2,143,116	2,499,547	2,880,110	3,180,936	3,246,033	3,119,848	3,021,073	2,976,520	2,912,402	2,918,402
Montgomery	141,896,429	164,467,981	182,975,851	183,562,521	175,163,507	163,840,448	159,469,990	161,008,847	165,081,932	170,535,674
Prince George's	59,911,071	71,568,514	85,687,003	95,828,317	95,961,368	83,077,561	76,308,869	73,074,771	73,739,984	74,474,478
Queen Anne's	6,111,806	7,299,651	8,358,833	8,987,459	8,688,003	8,486,036	7,967,775	7,636,884	7,536,500	7,766,500
St. Mary's	7,966,644	9,530,468	11,328,477	12,601,733	12,920,612	12,307,028	11,937,100	11,806,248	11,711,009	11,637,500
Somerset	1,116,304	1,333,556	1,564,620	1,685,922	1,698,004	1,615,002	1,410,142	1,417,905	1,361,825	1,428,884
Talbot	6,696,088	7,875,276	9,099,478	10,085,641	10,079,566	9,672,774	9,261,945	8,789,477	8,436,242	7,997,746
Washington	9,570,528	11,348,229	13,202,049	14,297,018	13,646,825	12,725,241	12,297,143	11,906,479	11,746,408	11,826,571
Wicomico	5,141,070	5,873,614	6,698,775	7,258,815	7,184,163	6,629,389	6,171,303	5,832,822	5,681,819	5,794,387
Worcester	14,185,180	17,038,234	20,092,743	18,968,635	17,864,742	17,221,019	15,454,392	14,526,197	14,004,657	14,905,663
Statewide	\$525,073,581	\$616,682,254	\$705,485,547	\$749,554,984	\$733,059,499	\$682,053,614	\$651,053,089	\$642,258,648	\$645,786,090	\$654,210,091

Source: State Department of Assessments and Taxation

Appendix 13

County Assessable Base – Real Property Tax Base

(Annual Percent Change)

County	FY 2008	FY 2009	FY 2010	FY 2011	FY 2012	FY 2013	FY 2014	FY 2015 E	FY 2016 E
Allegany	10.0%	7.7%	13.7%	5.4%	0.0%	-1.3%	-1.2%	-0.9%	-2.0%
Anne Arundel	18.9%	14.4%	6.1%	-2.2%	-6.4%	-4.3%	0.2%	1.3%	2.0%
Baltimore City	16.1%	16.5%	14.9%	2.7%	-4.4%	-6.7%	-1.8%	0.5%	-4.5%
Baltimore	16.4%	13.8%	9.2%	0.5%	-5.8%	-4.4%	-2.9%	-0.5%	-0.1%
Calvert	23.2%	17.2%	8.1%	-1.1%	-6.7%	-6.0%	-2.9%	-0.5%	0.8%
Caroline	18.6%	16.6%	11.9%	-0.5%	-7.6%	-5.0%	-5.7%	-2.4%	-1.3%
Carroll	16.4%	13.8%	8.9%	-5.5%	-5.9%	-4.6%	-1.5%	-0.5%	1.2%
Cecil	16.9%	14.4%	7.1%	-0.3%	-5.5%	-5.8%	-3.2%	-0.3%	0.5%
Charles	21.8%	16.5%	7.5%	-5.3%	-7.0%	-5.3%	-2.5%	-0.5%	2.8%
Dorchester	18.9%	15.1%	9.3%	0.7%	-9.0%	-3.4%	-4.7%	-2.4%	-2.4%
Frederick	19.6%	13.6%	6.2%	-7.0%	-8.8%	-4.7%	-0.6%	0.6%	0.4%
Garrett	15.1%	12.4%	8.1%	6.2%	-0.2%	-4.3%	-0.3%	-8.0%	0.3%
Harford	15.8%	14.6%	9.0%	0.5%	-4.3%	-2.2%	-1.0%	-2.4%	2.0%
Howard	16.5%	13.8%	5.2%	-4.2%	-6.5%	-2.2%	0.7%	1.8%	0.4%
Kent	16.6%	15.2%	10.4%	2.0%	-3.9%	-3.2%	-1.5%	-2.2%	0.2%
Montgomery	15.9%	11.3%	0.3%	-4.6%	-6.5%	-2.7%	1.0%	2.5%	3.3%
Prince George's	19.5%	19.7%	11.8%	0.1%	-13.4%	-8.1%	-4.2%	0.9%	1.0%
Queen Anne's	19.4%	14.5%	7.5%	-3.3%	-2.3%	-6.1%	-4.2%	-1.3%	3.1%
St. Mary's	19.6%	18.9%	11.2%	2.5%	-4.7%	-3.0%	-1.1%	-0.8%	-0.6%
Somerset	19.5%	17.3%	7.8%	0.7%	-4.9%	-12.7%	0.6%	-4.0%	4.9%
Talbot	17.6%	15.5%	10.8%	-0.1%	-4.0%	-4.2%	-5.1%	-4.0%	-5.2%
Washington	18.6%	16.3%	8.3%	-4.5%	-6.8%	-3.4%	-3.2%	-1.3%	0.7%
Wicomico	14.2%	14.0%	8.4%	-1.0%	-7.7%	-6.9%	-5.5%	-2.6%	2.0%
Worcester	20.1%	17.9%	-5.6%	-5.8%	-3.6%	-10.3%	-6.0%	-3.6%	6.4%
Statewide	17.4%	14.4%	6.2%	-2.2%	-7.0%	-4.5%	-1.4%	0.5%	1.3%

Source: State Department of Assessments and Taxation

Appendix 14

Assessable Base Loss Due to Homestead Tax Credit

(\$ in Thousands)

County	FY 2007	FY 2008	FY 2009	FY 2010	FY 2011	FY 2012	FY 2013	FY 2014	FY 2015 E	FY 2016 E
Allegany	\$10,242	\$47,204	\$101,116	\$171,351	\$152,059	\$69,466	\$33,294	\$16,430	\$9,391	\$5,368
Anne Arundel	12,046,510	17,771,980	23,300,341	24,338,805	20,411,826	15,424,859	12,094,879	10,418,753	9,798,838	9,215,808
Baltimore City	1,671,683	3,220,510	5,220,572	6,573,441	6,268,735	5,249,768	4,175,270	2,954,215	2,524,395	2,157,111
Baltimore	5,803,205	10,839,535	15,630,533	18,189,751	15,397,942	9,962,810	5,855,758	3,154,084	1,863,006	1,100,412
Calvert	497,824	1,037,336	1,516,813	1,468,778	680,760	124,333	18,879	5,364	1,560	454
Caroline	63,336	205,125	368,555	487,848	366,264	185,544	94,546	37,553	21,575	12,395
Carroll	1,150,377	2,230,615	3,268,030	3,642,355	1,808,116	598,963	174,961	62,040	23,859	9,176
Cecil	247,212	566,520	888,369	870,739	477,078	122,164	17,682	5,015	2,954	1,740
Charles	604,418	1,592,057	2,580,827	2,427,703	1,185,534	331,320	47,078	22,567	10,840	5,207
Dorchester	103,946	237,320	385,938	474,081	383,081	307,733	120,048	54,907	34,780	22,031
Frederick	1,982,915	3,867,882	5,378,543	5,420,640	2,874,169	909,398	208,166	84,530	52,732	32,896
Garrett	61,379	100,114	162,678	205,961	223,520	171,202	118,613	86,732	43,273	21,590
Harford	612,075	1,401,691	2,073,317	2,032,101	1,393,042	306,981	49,903	17,601	10,642	6,434
Howard	5,145,603	8,070,139	10,463,621	10,586,057	6,937,135	3,537,224	1,932,094	1,125,312	732,964	477,411
Kent	159,852	255,124	362,585	430,316	398,989	272,180	194,766	142,073	98,554	68,365
Montgomery	15,396,531	22,169,248	24,312,071	14,886,799	5,110,593	706,249	233,952	117,012	99,493	84,597
Prince George's	8,186,806	13,862,381	19,673,315	24,051,231	21,071,375	10,984,535	5,370,280	2,836,494	2,562,157	2,314,353
Queen Anne's	539,784	970,047	1,390,678	1,467,674	1,014,884	861,693	402,155	206,396	126,527	77,565
St. Mary's	539,031	1,168,948	1,918,741	2,278,846	1,909,118	1,126,764	712,187	402,004	239,542	142,736
Somerset	33,217	69,420	104,632	105,834	70,507	27,509	9,490	3,786	1,816	871
Talbot	1,414,341	1,964,215	2,507,182	2,901,232	2,685,366	2,371,757	2,056,169	1,725,579	1,552,361	1,396,531
Washington	226,114	958,176	1,763,131	2,067,428	1,129,486	474,704	172,210	45,177	23,972	12,720
Wicomico	94,472	219,514	377,275	408,656	249,776	53,465	12,618	4,726	3,517	2,617
Worcester	724,324	1,059,763	1,478,455	1,550,864	1,028,185	720,325	520,680	298,119	206,563	143,125
Statewide	\$57,315,197	\$93,884,862	\$125,227,318	\$127,038,491	\$93,227,540	\$54,900,946	\$34,625,678	\$23,826,469	\$20,045,311	\$17,311,513

Source: State Department of Assessments and Taxation

Appendix 15

Assessable Base Loss Due to Homestead Tax Credit

Percent of Real Property Tax Base

County	FY 2007	FY 2008	FY 2009	FY 2010	FY 2011	FY 2012	FY 2013	FY 2014	FY 2015 E	FY 2016 E
Allegany	0.4%	1.7%	3.3%	4.9%	4.1%	1.9%	0.9%	0.5%	0.3%	0.2%
Anne Arundel	20.7%	25.7%	29.4%	28.9%	24.8%	20.0%	16.4%	14.1%	13.1%	12.1%
Baltimore City	7.2%	11.9%	16.6%	18.2%	16.9%	14.8%	12.6%	9.1%	7.7%	6.9%
Baltimore	9.8%	15.7%	19.9%	21.2%	17.8%	12.3%	7.5%	4.2%	2.5%	1.5%
Calvert	5.8%	9.8%	12.2%	10.9%	5.1%	1.0%	0.2%	0.0%	0.0%	0.0%
Caroline	3.2%	8.7%	13.3%	15.8%	11.9%	6.5%	3.5%	1.5%	0.9%	0.5%
Carroll	7.7%	12.8%	16.5%	16.9%	8.9%	3.1%	1.0%	0.3%	0.1%	0.1%
Cecil	3.3%	6.4%	8.8%	8.1%	4.4%	1.2%	0.2%	0.1%	0.0%	0.0%
Charles	4.9%	10.5%	14.7%	12.8%	6.6%	2.0%	0.3%	0.1%	0.1%	0.0%
Dorchester	4.6%	8.8%	12.4%	14.0%	11.2%	9.9%	4.0%	1.9%	1.2%	0.8%
Frederick	9.0%	14.7%	18.0%	17.1%	9.8%	3.4%	0.8%	0.3%	0.2%	0.1%
Garrett	1.9%	2.7%	3.8%	4.5%	4.6%	3.5%	2.6%	1.9%	1.0%	0.5%
Harford	3.2%	6.4%	8.2%	7.4%	5.0%	1.2%	0.2%	0.1%	0.0%	0.0%
Howard	14.8%	19.9%	22.7%	21.8%	14.9%	8.1%	4.6%	2.6%	1.7%	1.1%
Kent	7.5%	10.2%	12.6%	13.5%	12.3%	8.7%	6.4%	4.8%	3.4%	2.3%
Montgomery	10.9%	13.5%	13.3%	8.1%	2.9%	0.4%	0.1%	0.1%	0.1%	0.0%
Prince George's	13.7%	19.4%	23.0%	25.1%	22.0%	13.2%	7.0%	3.9%	3.5%	3.1%
Queen Anne's	8.8%	13.3%	16.6%	16.3%	11.7%	10.2%	5.0%	2.7%	1.7%	1.0%
St. Mary's	6.8%	12.3%	16.9%	18.1%	14.8%	9.2%	6.0%	3.4%	2.0%	1.2%
Somerset	3.0%	5.2%	6.7%	6.3%	4.2%	1.7%	0.7%	0.3%	0.1%	0.1%
Talbot	21.1%	24.9%	27.6%	28.8%	26.6%	24.5%	22.2%	19.6%	18.4%	17.5%
Washington	2.4%	8.4%	13.4%	14.5%	8.3%	3.7%	1.4%	0.4%	0.2%	0.1%
Wicomico	1.8%	3.7%	5.6%	5.6%	3.5%	0.8%	0.2%	0.1%	0.1%	0.0%
Worcester	5.1%	6.2%	7.4%	8.2%	5.8%	4.2%	3.4%	2.1%	1.5%	1.0%
Statewide	10.9%	15.2%	17.8%	16.9%	12.7%	8.0%	5.3%	3.7%	3.1%	2.6%

Source: State Department of Assessments and Taxation

Appendix 16
County Assessable Base – Real Property
Adjusted for Homestead Tax Credit
(\$ in Thousands)

County	FY 2007	FY 2008	FY 2009	FY 2010	FY 2011	FY 2012	FY 2013	FY 2014	FY 2015 E	FY 2016 E
Allegany	\$2,576,730	\$2,799,287	\$2,963,955	\$3,313,101	\$3,520,427	\$3,602,515	\$3,591,372	\$3,563,018	\$3,536,269	\$3,469,852
Anne Arundel	46,242,568	51,512,395	55,934,461	59,761,421	61,843,001	61,573,424	61,611,060	63,446,602	65,051,953	67,134,991
Baltimore City	21,598,366	23,805,779	26,255,624	29,578,949	30,855,110	30,246,508	28,957,848	29,594,414	30,180,663	29,092,435
Baltimore	53,585,154	58,270,158	63,007,608	67,698,919	70,896,640	71,298,404	71,869,089	72,314,994	73,259,879	73,953,789
Calvert	8,129,750	9,590,258	10,933,997	11,990,747	12,635,865	12,300,778	11,659,466	11,328,871	11,272,552	11,361,225
Caroline	1,935,177	2,165,736	2,396,768	2,607,905	2,713,538	2,661,454	2,610,810	2,512,804	2,467,595	2,444,547
Carroll	13,778,550	15,149,259	16,504,135	17,897,621	18,545,663	18,544,943	18,094,172	17,937,378	17,876,816	18,098,556
Cecil	7,290,849	8,246,814	9,191,918	9,929,703	10,289,924	10,054,934	9,569,231	9,275,425	9,252,754	9,299,028
Charles	11,808,108	13,529,375	15,029,651	16,510,934	16,755,828	16,356,388	15,762,145	15,391,687	15,319,260	15,754,906
Dorchester	2,162,928	2,457,835	2,716,902	2,917,595	3,033,135	2,800,325	2,881,730	2,806,693	2,758,651	2,704,382
Frederick	19,974,062	22,386,595	24,447,165	26,258,345	26,589,953	25,952,228	25,388,048	25,349,126	25,540,474	25,663,995
Garrett	3,210,651	3,664,523	4,069,562	4,367,207	4,634,521	4,675,046	4,518,227	4,534,541	4,206,411	4,239,080
Harford	18,382,149	20,588,312	23,126,767	25,433,202	26,202,581	26,102,888	25,771,474	25,552,036	24,941,641	25,445,871
Howard	29,659,578	32,492,831	35,679,842	37,942,727	39,531,230	39,887,668	40,527,516	41,629,806	42,777,585	43,193,596
Kent	1,983,264	2,244,423	2,517,525	2,750,620	2,847,044	2,847,668	2,826,307	2,834,447	2,813,848	2,850,037
Montgomery	126,499,898	142,298,733	158,663,780	168,675,722	170,052,914	163,134,199	159,236,038	160,891,835	164,982,439	170,451,077
Prince George's	51,724,265	57,706,133	66,013,688	71,777,086	74,889,993	72,093,026	70,938,589	70,238,277	71,177,827	72,160,125
Queen Anne's	5,572,022	6,329,604	6,968,155	7,519,785	7,673,119	7,624,343	7,565,620	7,430,488	7,409,973	7,688,935
St. Mary's	7,427,613	8,361,519	9,409,736	10,322,887	11,011,494	11,180,264	11,224,913	11,404,244	11,471,467	11,494,764
Somerset	1,083,087	1,264,136	1,459,988	1,580,088	1,627,497	1,587,493	1,400,652	1,414,119	1,360,009	1,428,013
Talbot	5,281,747	5,911,061	6,592,296	7,184,409	7,394,200	7,301,017	7,205,776	7,063,898	6,883,881	6,601,215
Washington	9,344,414	10,390,052	11,438,918	12,229,590	12,517,339	12,250,537	12,124,933	11,861,302	11,722,436	11,813,851
Wicomico	5,046,598	5,654,100	6,321,500	6,850,159	6,934,387	6,575,924	6,158,685	5,828,096	5,678,302	5,791,770
Worcester	13,460,856	15,978,471	18,614,288	17,417,771	16,836,557	16,500,694	14,933,712	14,228,078	13,798,094	14,762,538
Statewide	\$467,758,384	\$522,797,391	\$580,258,229	\$622,516,493	\$639,831,959	\$627,152,668	\$616,427,411	\$618,432,179	\$625,740,779	\$636,898,578

Source: State Department of Assessments and Taxation

Appendix 17 **County Assessable Base – Real Property** **Adjusted for Homestead Tax Credit** **(Annual Percent Change)**

County	FY 2008	FY 2009	FY 2010	FY 2011	FY 2012	FY 2013	FY 2014	FY 2015 E	FY 2016 E
Allegany	8.6%	5.9%	11.8%	6.3%	2.3%	-0.3%	-0.8%	-0.8%	-1.9%
Anne Arundel	11.4%	8.6%	6.8%	3.5%	-0.4%	0.1%	3.0%	2.5%	3.2%
Baltimore City	10.2%	10.3%	12.7%	4.3%	-2.0%	-4.3%	2.2%	2.0%	-3.6%
Baltimore	8.7%	8.1%	7.4%	4.7%	0.6%	0.8%	0.6%	1.3%	0.9%
Calvert	18.0%	14.0%	9.7%	5.4%	-2.7%	-5.2%	-2.8%	-0.5%	0.8%
Caroline	11.9%	10.7%	8.8%	4.1%	-1.9%	-1.9%	-3.8%	-1.8%	-0.9%
Carroll	9.9%	8.9%	8.4%	3.6%	0.0%	-2.4%	-0.9%	-0.3%	1.2%
Cecil	13.1%	11.5%	8.0%	3.6%	-2.3%	-4.8%	-3.1%	-0.2%	0.5%
Charles	14.6%	11.1%	9.9%	1.5%	-2.4%	-3.6%	-2.4%	-0.5%	2.8%
Dorchester	13.6%	10.5%	7.4%	4.0%	-7.7%	2.9%	-2.6%	-1.7%	-2.0%
Frederick	12.1%	9.2%	7.4%	1.3%	-2.4%	-2.2%	-0.2%	0.8%	0.5%
Garrett	14.1%	11.1%	7.3%	6.1%	0.9%	-3.4%	0.4%	-7.2%	0.8%
Harford	12.0%	12.3%	10.0%	3.0%	-0.4%	-1.3%	-0.9%	-2.4%	2.0%
Howard	9.6%	9.8%	6.3%	4.2%	0.9%	1.6%	2.7%	2.8%	1.0%
Kent	13.2%	12.2%	9.3%	3.5%	0.0%	-0.8%	0.3%	-0.7%	1.3%
Montgomery	12.5%	11.5%	6.3%	0.8%	-4.1%	-2.4%	1.0%	2.5%	3.3%
Prince George's	11.6%	14.4%	8.7%	4.3%	-3.7%	-1.6%	-1.0%	1.3%	1.4%
Queen Anne's	13.6%	10.1%	7.9%	2.0%	-0.6%	-0.8%	-1.8%	-0.3%	3.8%
St. Mary's	12.6%	12.5%	9.7%	6.7%	1.5%	0.4%	1.6%	0.6%	0.2%
Somerset	16.7%	15.5%	8.2%	3.0%	-2.5%	-11.8%	1.0%	-3.8%	5.0%
Talbot	11.9%	11.5%	9.0%	2.9%	-1.3%	-1.3%	-2.0%	-2.5%	-4.1%
Washington	11.2%	10.1%	6.9%	2.4%	-2.1%	-1.0%	-2.2%	-1.2%	0.8%
Wicomico	12.0%	11.8%	8.4%	1.2%	-5.2%	-6.3%	-5.4%	-2.6%	2.0%
Worcester	18.7%	16.5%	-6.4%	-3.3%	-2.0%	-9.5%	-4.7%	-3.0%	7.0%
Statewide	11.8%	11.0%	7.3%	2.8%	-2.0%	-1.7%	0.3%	1.2%	1.8%

Source: State Department of Assessments and Taxation