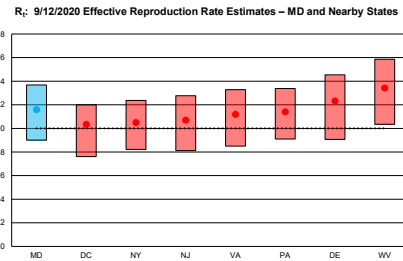
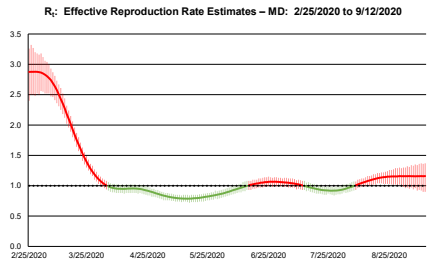
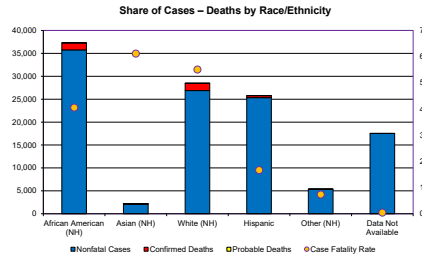
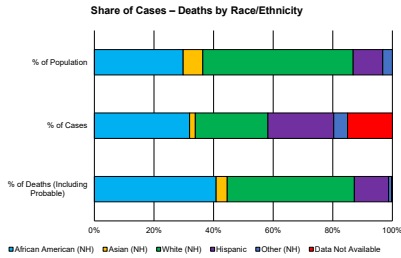
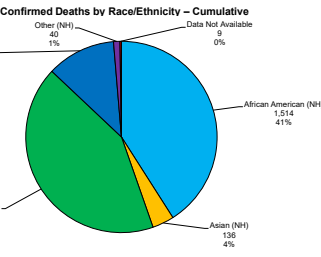
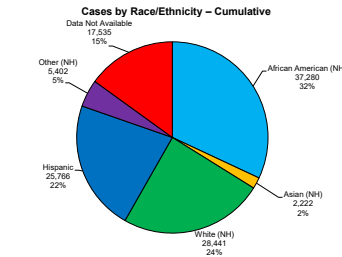
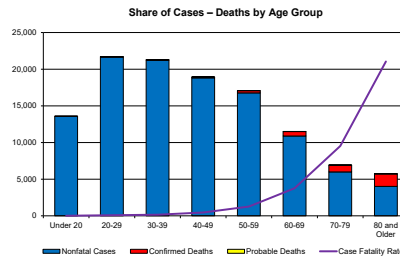
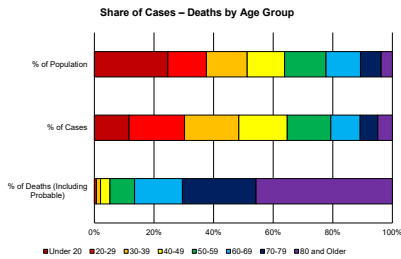
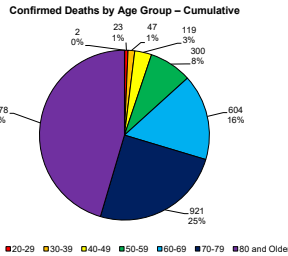
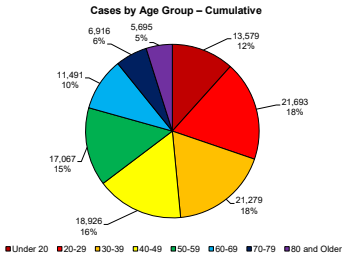


Region I: Garrett and Allegany Counties
 Region II: Washington and Frederick Counties
 Region III: Anne Arundel, Baltimore City, Baltimore County, Carroll, Harford, and Howard Counties

Region IV: Eastern Shore Counties
 Region V: Calvert, Charles, Montgomery, Prince George's, and St. Mary's Counties



Rt represents the effective reproduction rate of the virus calculated for each locale. It lets us estimate how many secondary infections are likely to occur from a single infection in a specific area. Values over 1.0 mean we should expect more cases in that area, values under 1.0 mean we should expect fewer. The above data includes 80% confidence intervals for Maryland and surrounding states for the Rt estimates most recently available. Estimates are populated from r.live, where further details on model calculations and source codes can be found.