

**Presentation to Commission to  
Restore Trust in Policing**

**November 13, 2018**

**Baltimore City Administration**



# Introduction

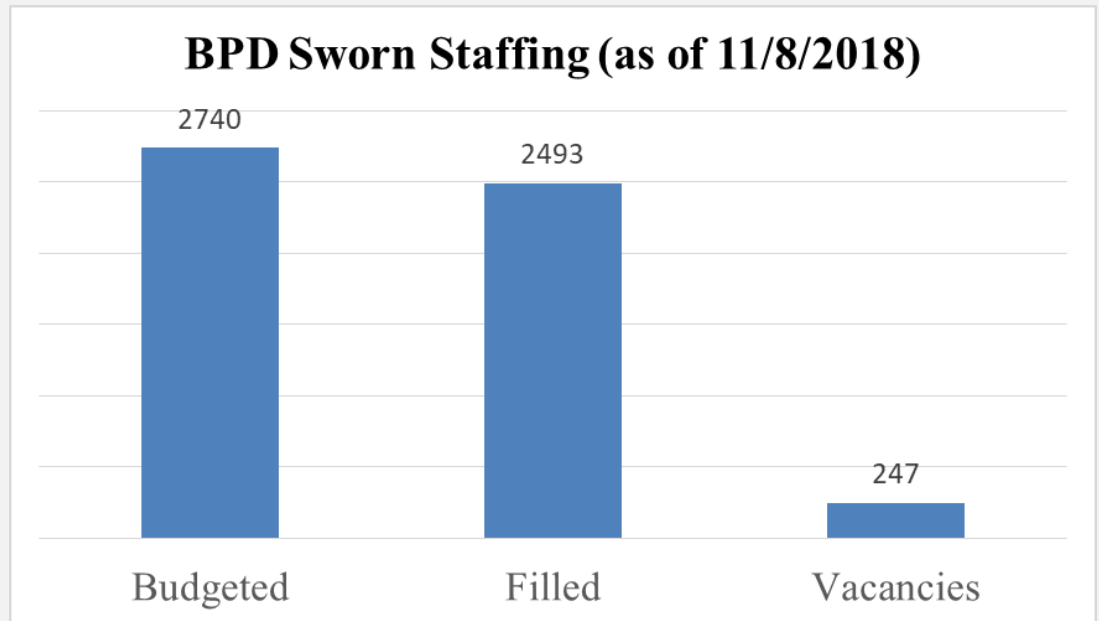
1. BPD Personnel:
  - BPD Sworn Staffing
  - Hiring and Attrition (2002-2018)
  - BPD Applications (2018)
2. Violent Crime Data
  - Homicide & Shooting Data (2012-2018)
  - Homicide and Shooting Data (2017/2018)
  - Overall Part I Crime (YTD 2017/2018)



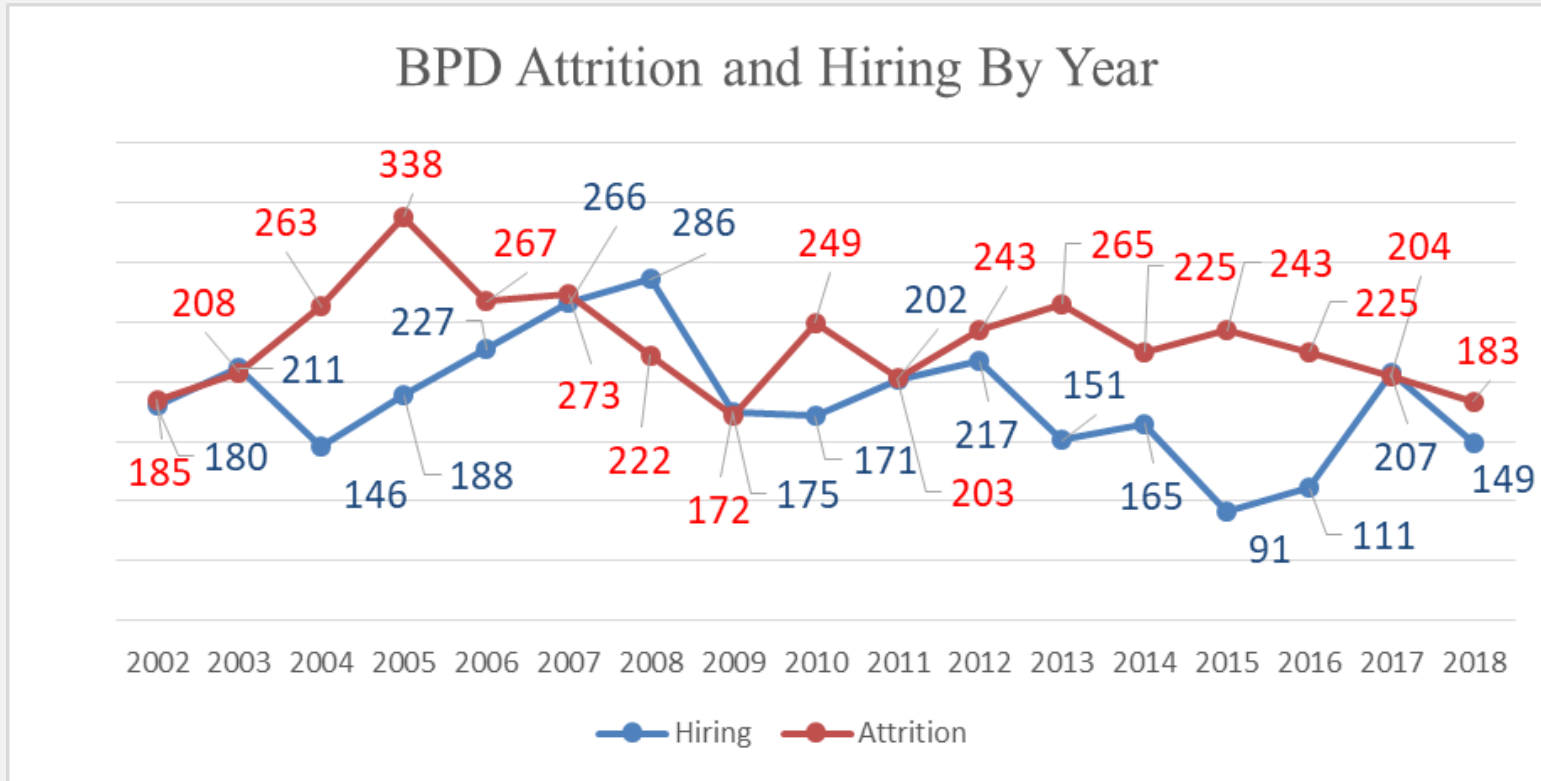
BPD Personnel

# BPD Sworn Staffing

- As of 11/8/2018, over 90% of BPD's sworn staffing has been filled.
- In comparison, BPD has filled 89% of all allocated civilian positions (450/507).



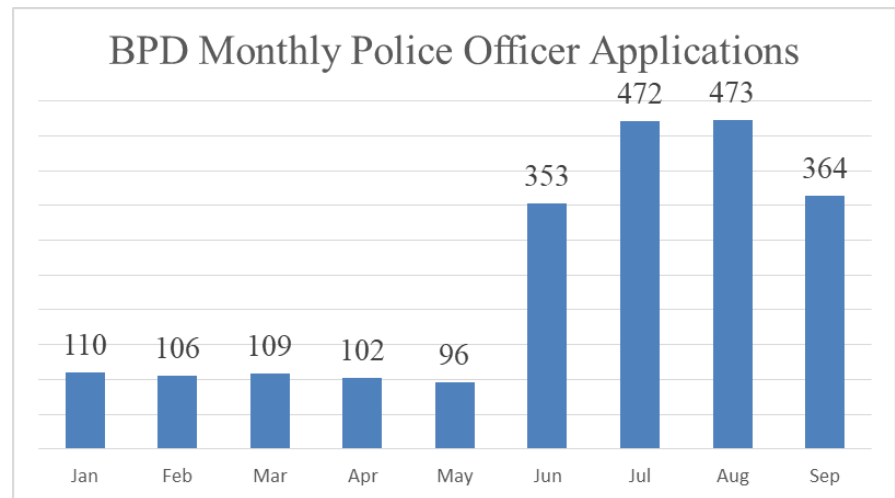
# Hiring and Attrition



From 2002-2018, attrition has outgained hiring by nearly 21%

# BPD Officer Applications

- In June 2018, BPD introduced an online application process that has led to a significant increase in the number of applicants.

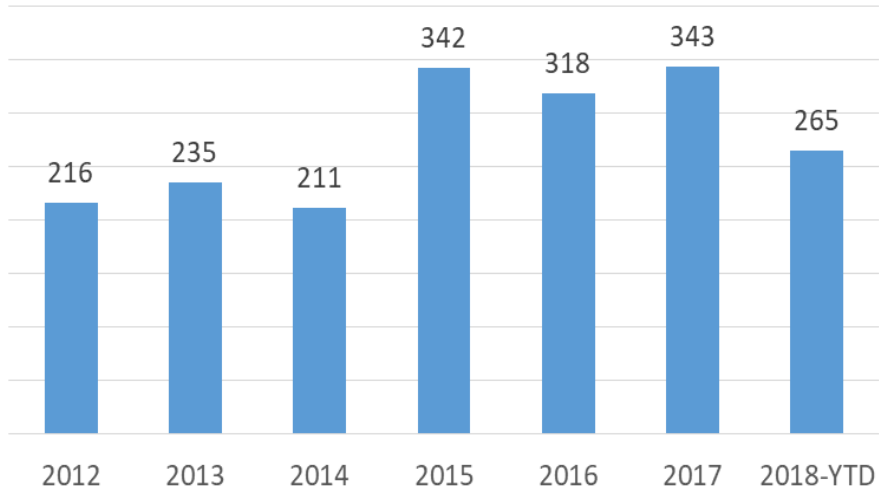




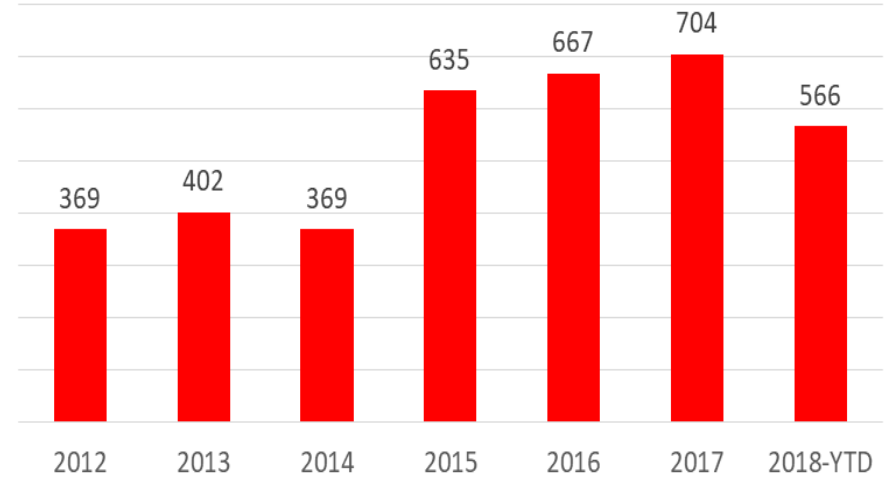
# Violent Crime Data

# Homicide & Shootings 2012-2018

## Annual Homicide Totals 2012-2018

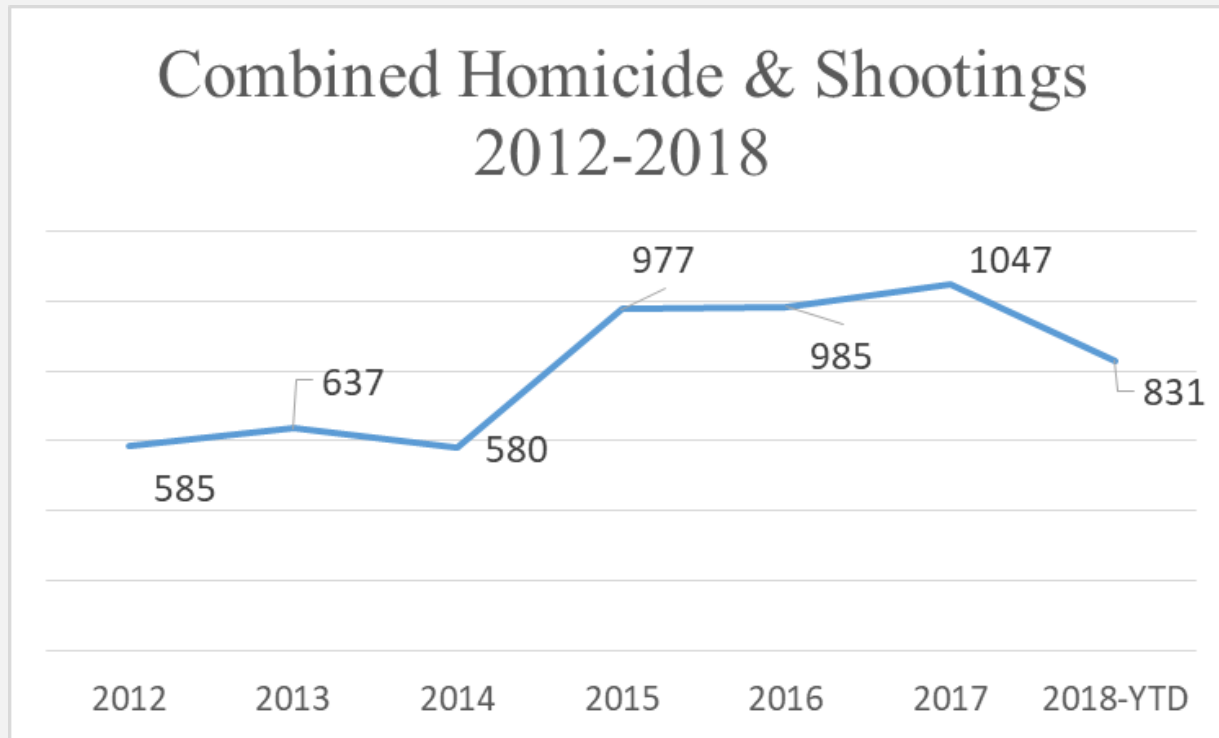


## Annual Shooting Totals 2012-2018

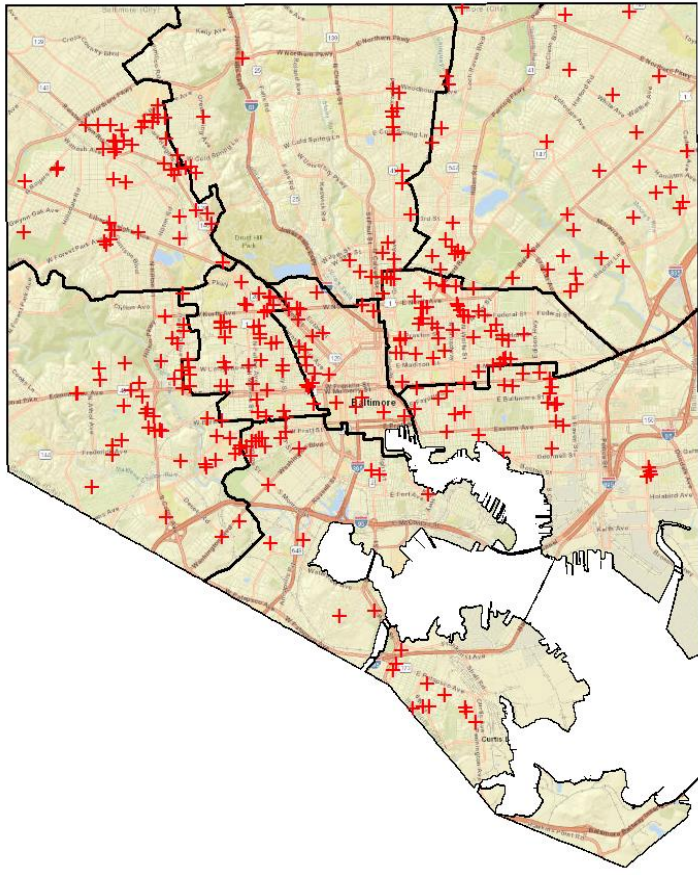




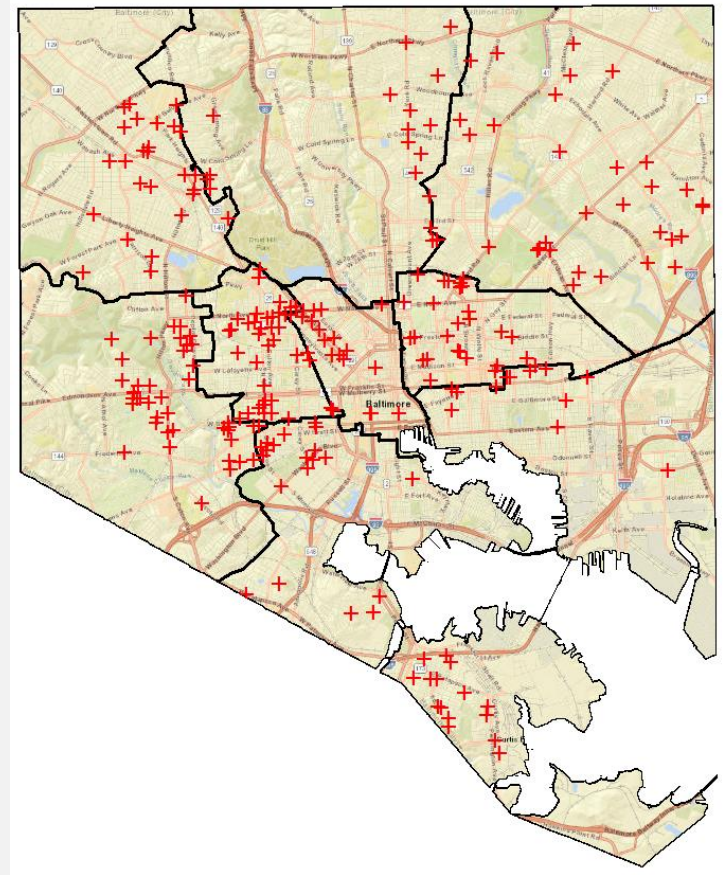
# Homicide & Shooting Totals 2012-2018



# 2017 Homicides



# 2018 YTD Homicides



# Part 1 Crime

## 2017/2018 YTD Comparison

	2017 YTD	2018 YTD	% Difference
Homicides	301	265	-12.0
Non-Fatal Shootings	609	566	-7.1
Gun Related (Hom/NFS)	870	799	-8.2
Rape	309	285	-7.8
Robbery	5,163	4,361	-15.5
Aggravated Assault	5,055	4,634	-8.3
Burglary	6,840	5,029	-26.5
Larceny	14,356	13,762	-4.1
Auto Theft (Excl. Attempts)	3,874	3,534	-8.8
Arson	236	107	-54.7
Total Violent Crime	10,828	9,545	-11.8
Total Property Crime	25,306	22,432	-11.4
Total Part 1 Crime	36,134	31,977	-11.5



Questions?