
Probation Experiences of Maryland Youth

September 17, 2020

Youth Characteristics

For FY 2019, there were 1,825 total probation releases across 1,810 youth

Demographics:

- 82% male, 18% female
- 68% Black, 26% white, 6% Hispanic/Latinx, < 1% other
- 8-20 years old, average age at admission: 15.7 years old

Regional: 25% Central, 19% Baltimore City, 19% Metro, 15% Southern, 13% Eastern Shore, 10% Western

Charges: 72% misdemeanors, 14% felonies, 12% crimes of violence, 1% citations/ordinance offenses, <1% probation violations

Risk: 57% low risk, 28% moderate risk, 15% high risk

Length of Time on each Supervision Level

Of the 1,825 probation releases, 1,788 (98%) had supervision-level data

- Average time on **high supervision**: 2.7 months
 - Weekly: face to face contact with youth
 - Bi-weekly: contact with guardian (in-person, phone, or electronic)
- Average time on **moderate supervision**: 5.8 months
 - Bi-weekly: face-to-face contacts each month with youth
 - Monthly: contact with guardian (in-person, phone, or electronic)
- Average time on **low supervision**: 7.0 months
 - Monthly: face-to-face contact with youth
 - Monthly: contact with guardian (in-person, phone, or electronic)

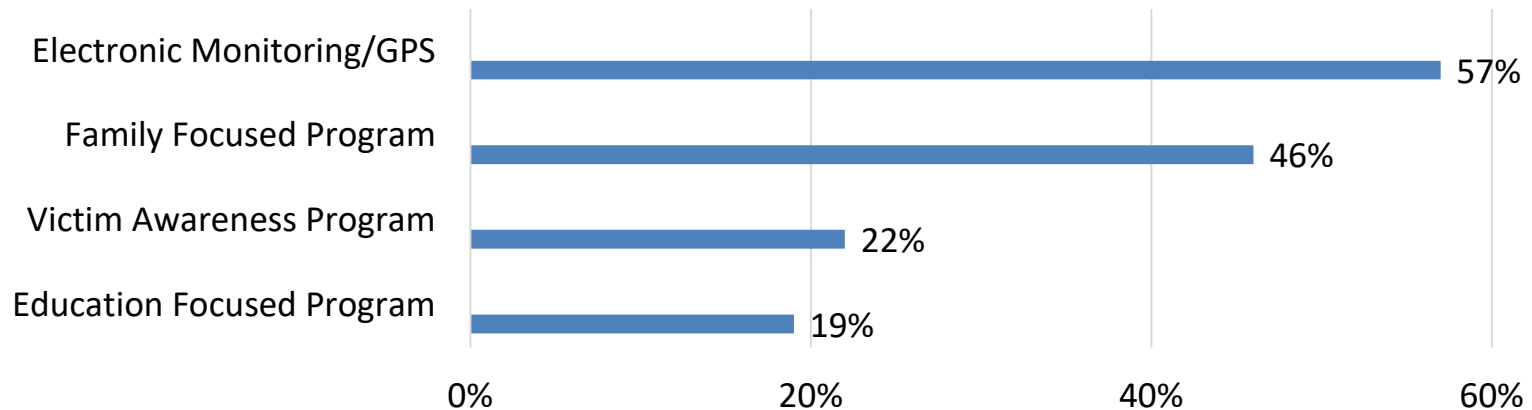
Note: estimates are conservative due to the structure of the data

Community Placements During Probation

Of the 1,825 cases, 1,295 (71%) included at least 1 additional placement/service in the community

- There were a total of 2,634 distinct community placements for this sample of probation releases (average = 2 each)

Most Common Placements for Youth in the Community
(% of Youth Placed)

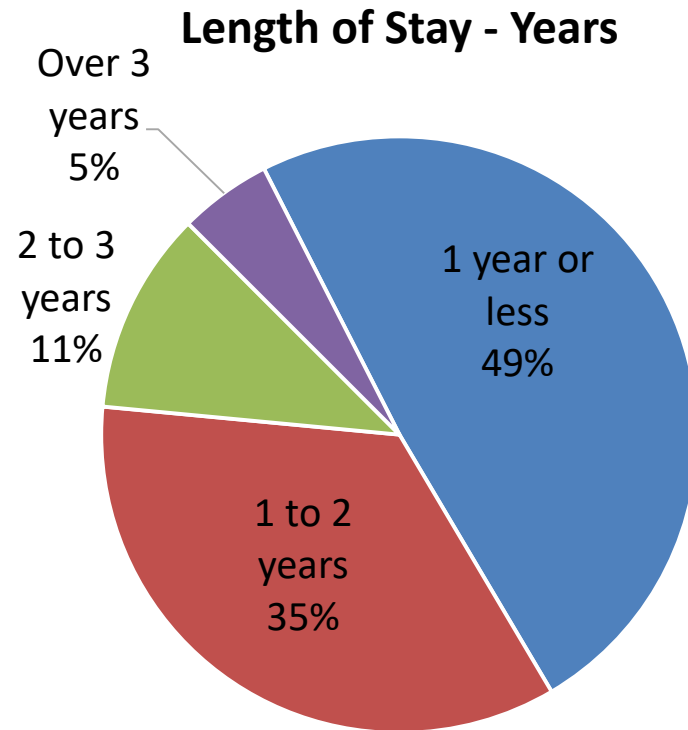


Note: Categories are not mutually exclusive

Length of Stay on Probation

For this cohort of probation releases, length of stay on probation ranged from 0 to 2,744 days (91.5 months)

Average length of stay: 450 days (15.0 months)



Differences in Avg. Length of Stay on Probation

By Age at Admission*

- Peaks at 11 (24.7 months) & decreases for older ages

By Sex

- Girls: 15.0 months
- Boys: 15.0 months

By Race/Ethnicity

- White: 14.3 months
- Black: 15.3 months
- Hispanic/Latinx: 15.9 months

By Risk Level

- Low risk: 15.3 months
- Moderate Risk: 15.2 months
- High Risk: 13.9 months

By Region*

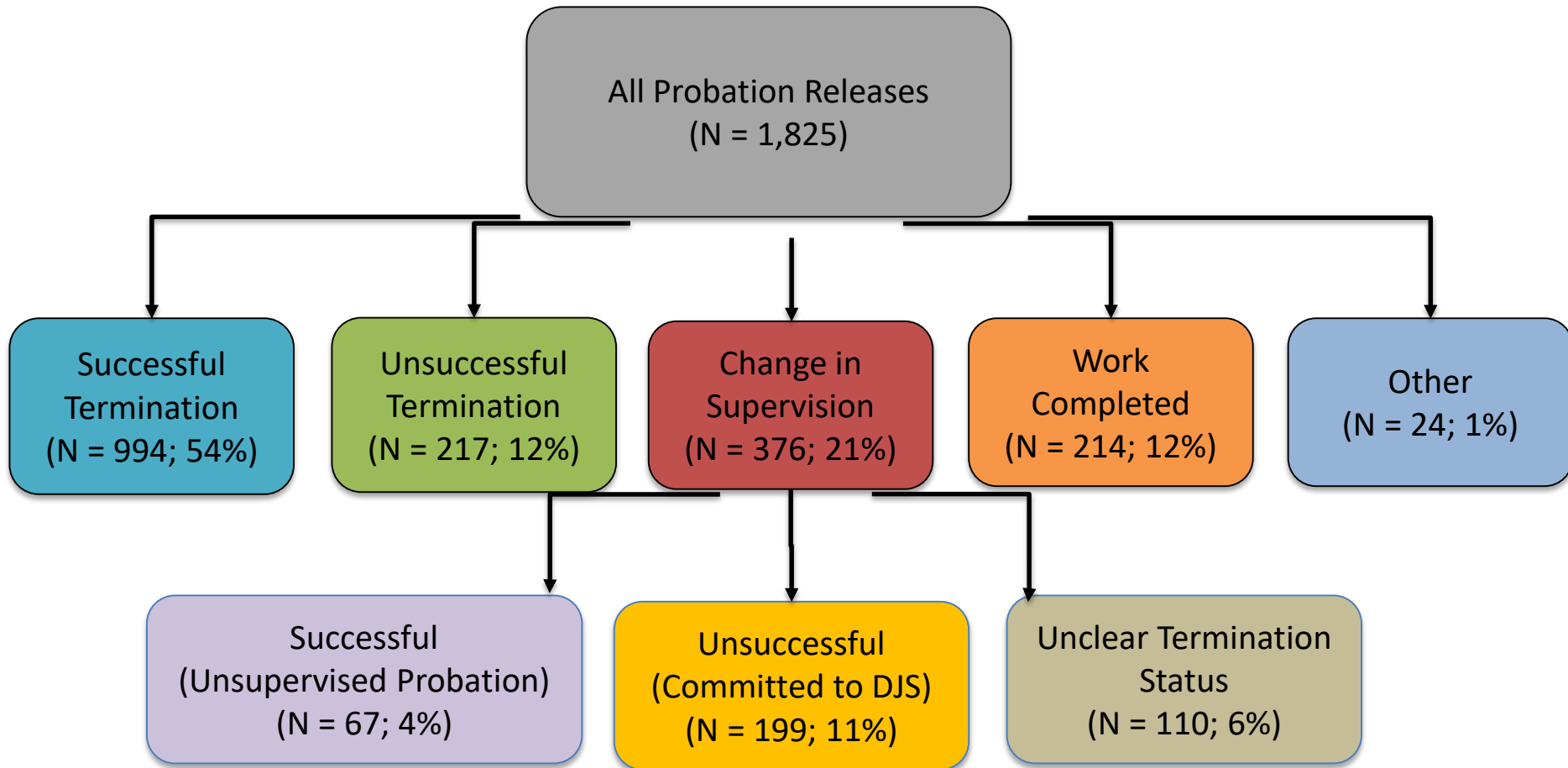
- Baltimore City: 16.4 months
- Central: 14.0 months
- Eastern Shore: 14.7 months
- Metro: 16.4 months
- Southern: 15.4 months
- Western: 11.9 months

By Adjudicated Offense

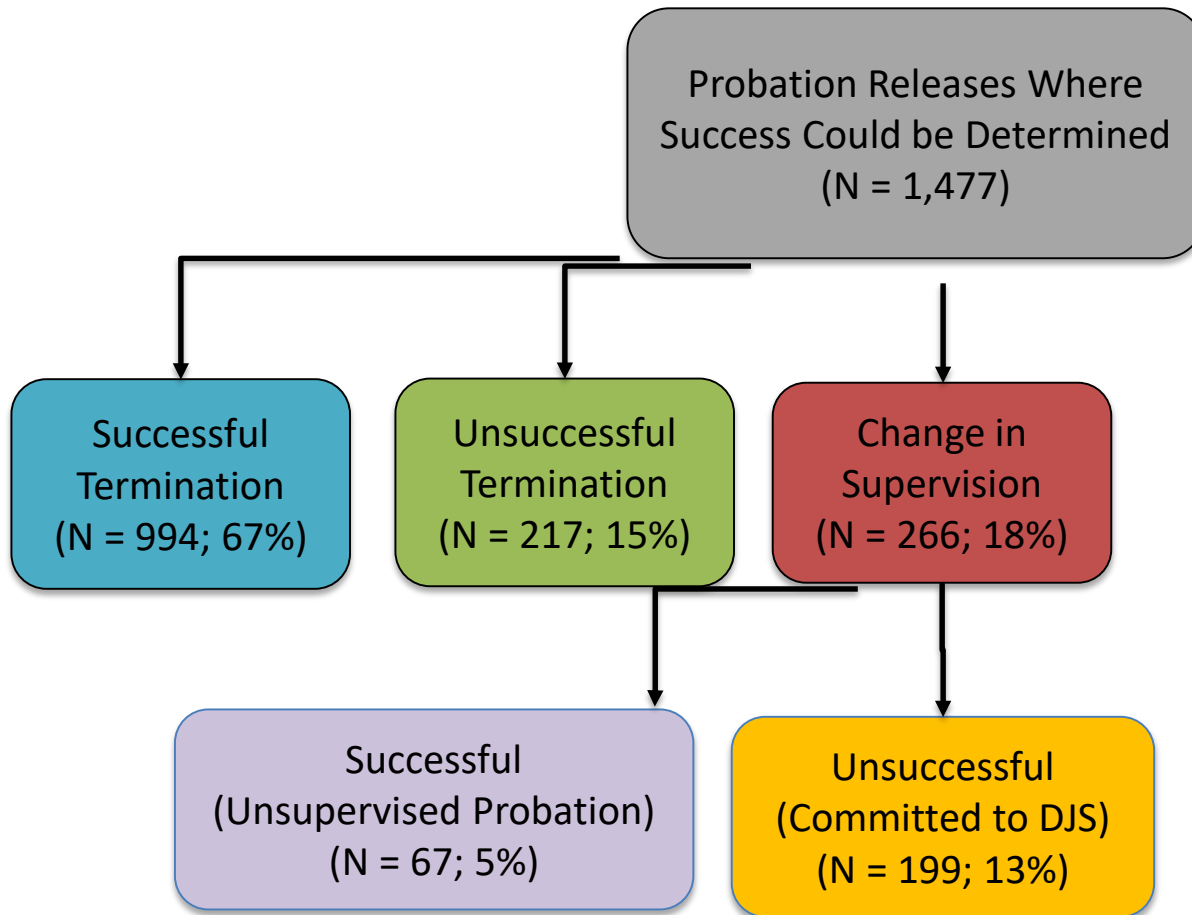
- Misdemeanor: 15.0 months
- Felony: 14.9 months
- Crime of Violence: 15.4 months

**** Denotes differences that remained significant when included in a model that held all other measures constant***

Probation Release Reasons



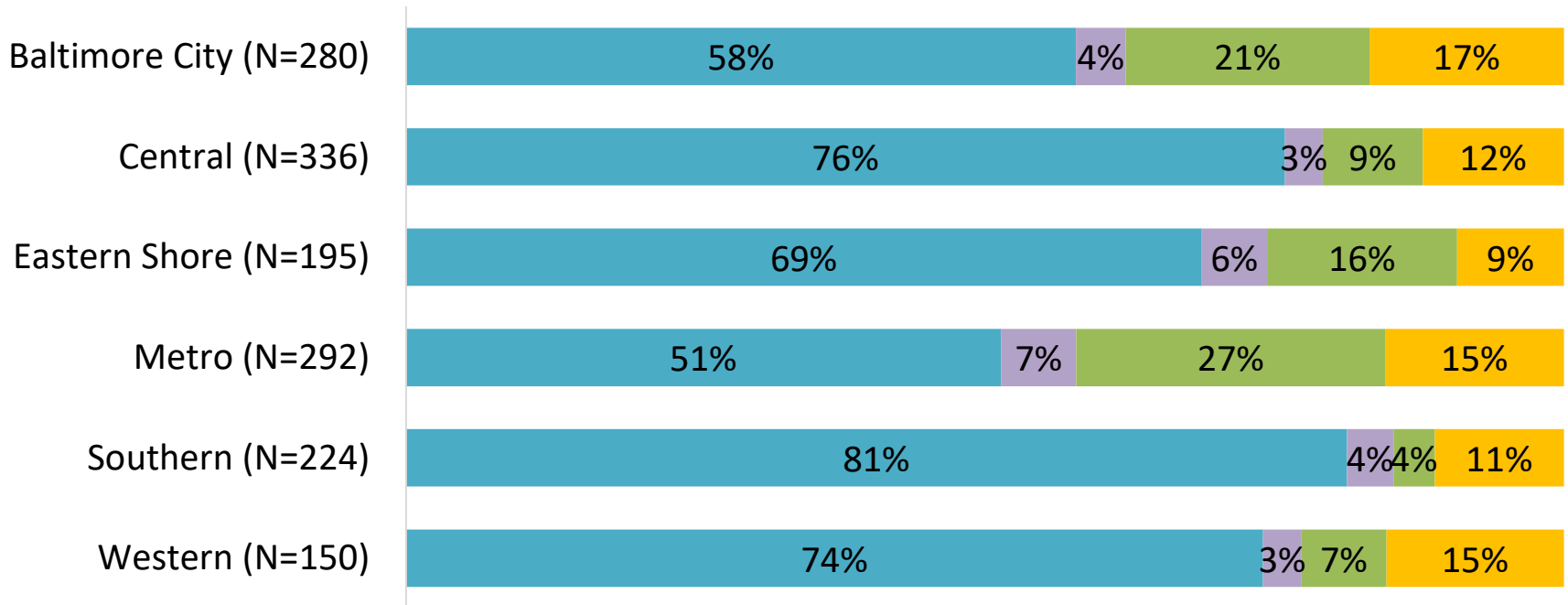
Probation Release Reasons



Focusing on the 1,477 cases (81% of all cases) where success could be determined:

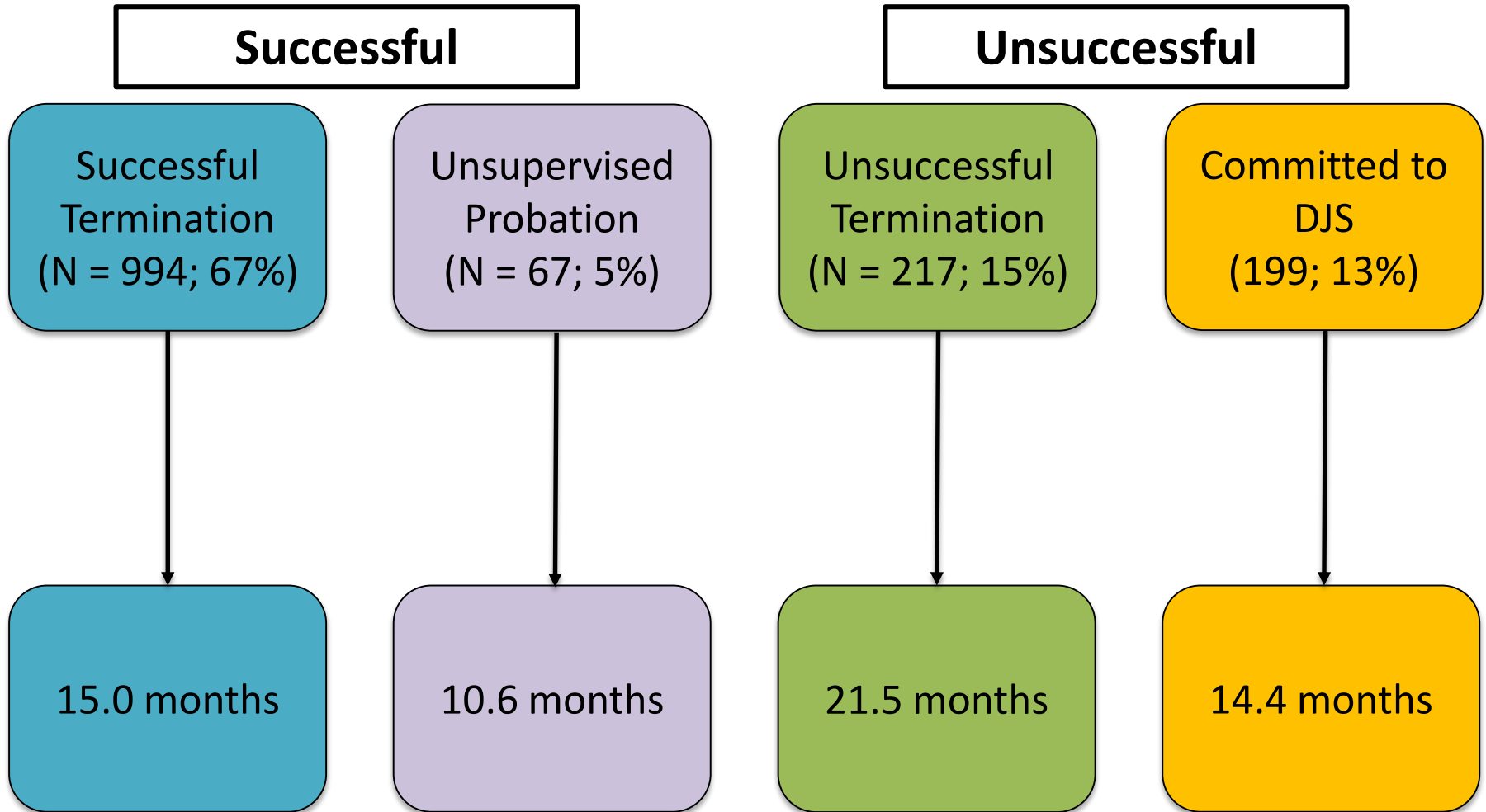
- 72% of these cases were successfully terminated
- 28% of these cases were unsuccessfully terminated

Probation Release Reasons by Region



- % of Cases - Successful Termination
- % of Cases - Successful Due to Unsupervised Probation
- % of Cases - Unsuccessful Termination
- % of Cases - Unsuccessful Due to DJS Commitment

Average LOS by Termination Reason



Unsuccessful Due to New DJS Commitment

199 youth had their probation terminated unsuccessfully due to a new DJS commitment:

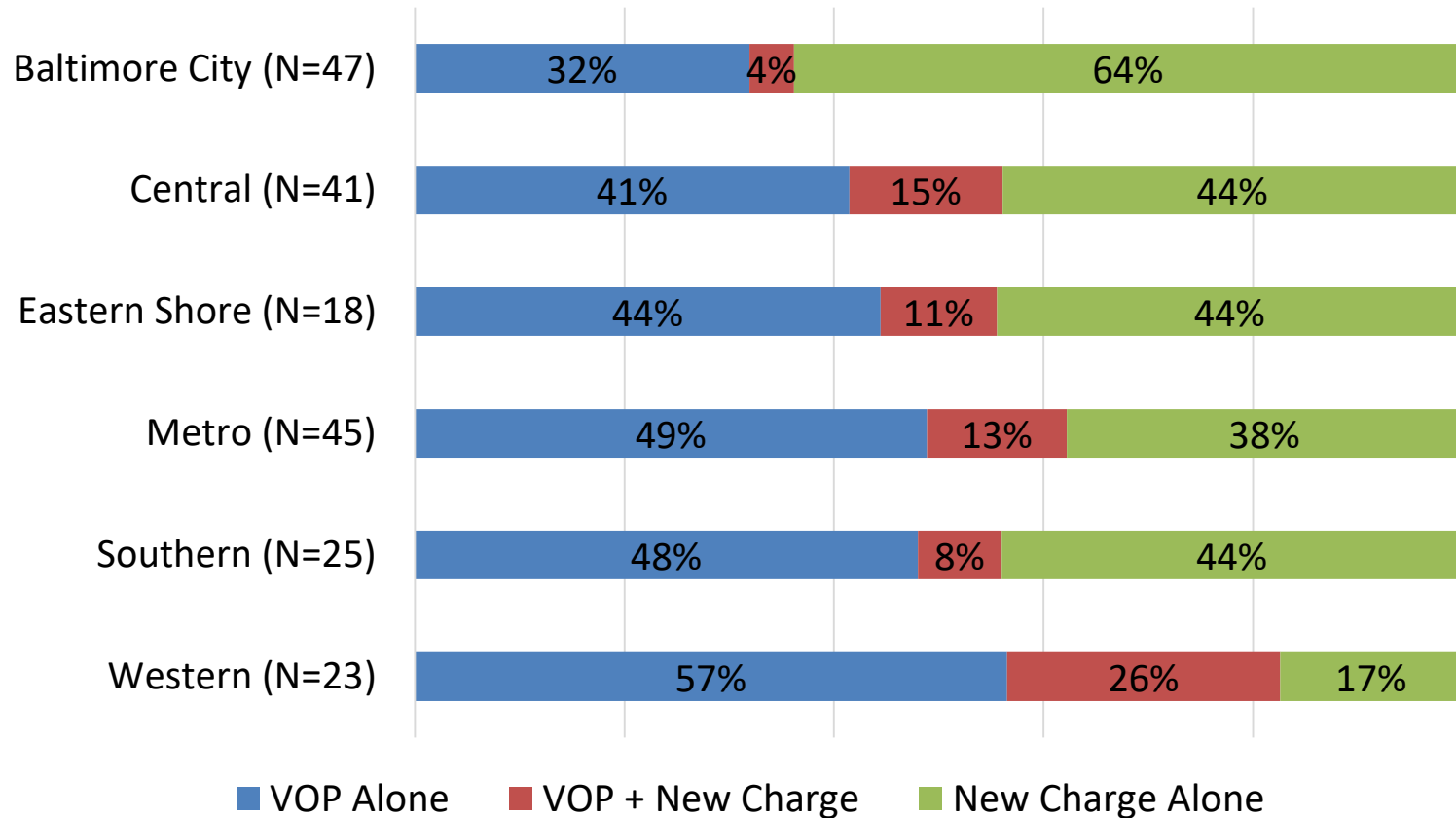
111 cases included at least 1 violation of probation

- 87 of these cases were for VOP(s) alone
- 24 cases were for VOP(s) along with at least 1 new charge
 - Most of these charges were misdemeanors
 - 21% crimes of violence, 15% felonies, 63% misdemeanors

88 cases were for a new charges, no violations of probation

- Most of these charges were for serious offenses
- 49% crimes of violence, 15% felonies, 36% misdemeanors

Unsuccessful Due to New DJS Commitment



Questions?

Additional Slides

Probation Sample & Overall DJS Context

Probation Releases FY 2019

82% male, 18% female

68% Black, 26% white, 6% Hispanic/Latinx,
< 1% other

8-20 years old, average age at admission:
15.7 years old

25% Central, 19% Baltimore City, 19%
Metro, 15% Southern, 13% Eastern Shore,
10% Western

72% misdemeanors, 14% felonies,
12% crimes of violence, 1% citations/
ordinance offenses, <1% probation
violations

New Intakes FY 2019

71% male, 29% female

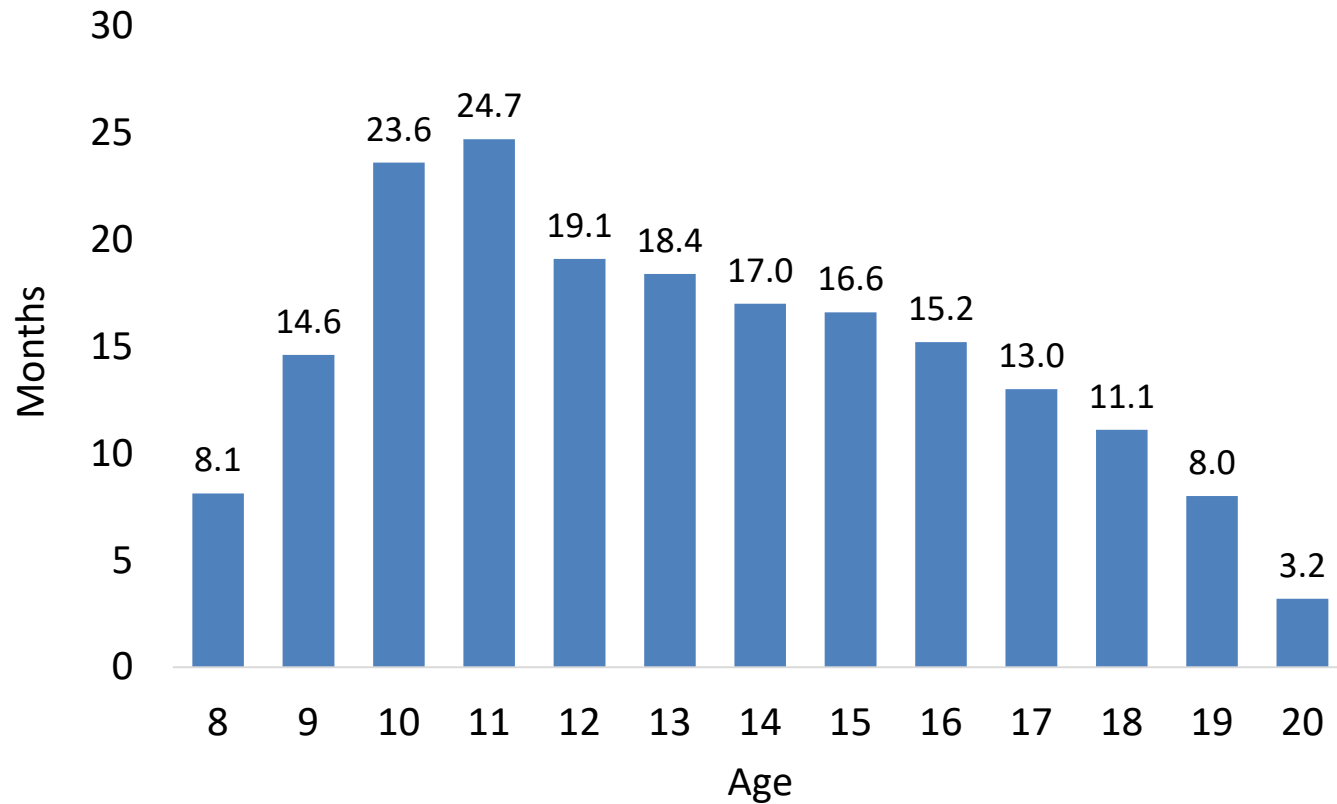
62% Black, 29% white, 7% Hispanic/Latinx,
2% other

6-21 years old, average age at intake: 15.1
years old

26% Central, 7% Baltimore City, 17% Metro,
21% Southern, 17% Eastern Shore, 12%
Western

67% misdemeanors, 8% felonies, 11%
crimes of violence, 14% citations/
ordinance offenses

Mean LOS on Probation by Age at Admission



No Community Placements (N = 530) as a Percentage of All Cases (N = 1,825)

Sex:

- *Males: 29%,
Females: 30%*

Race/Ethnicity

- *Black youth: 26%*
- *Hispanic youth: 29%*
- *White youth: 36%*

Risk:

- *Low-Risk: 33%*
- *Moderate-Risk: 23%*
- *High-Risk: 25%*

Region:

- *Baltimore City: 17%*
- *Central: 27%*
- *Eastern Shore: 47%*
- *Metro: 34%*
- *Southern: 25%*
- *Western: 29%*

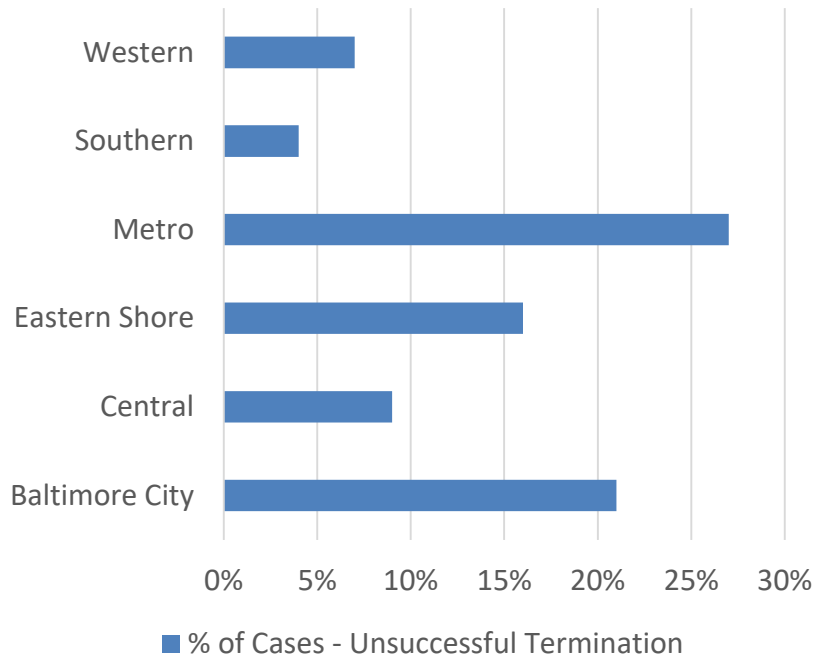
Charge Severity

- *Misdemeanor: 31%*
- *Felony: 27%*
- *Crime of Violence: 21%*



Unsuccessful Terminations

% of Cases - Unsuccessful Termination



Length of Stay - Unsuccessful Termination

