

---

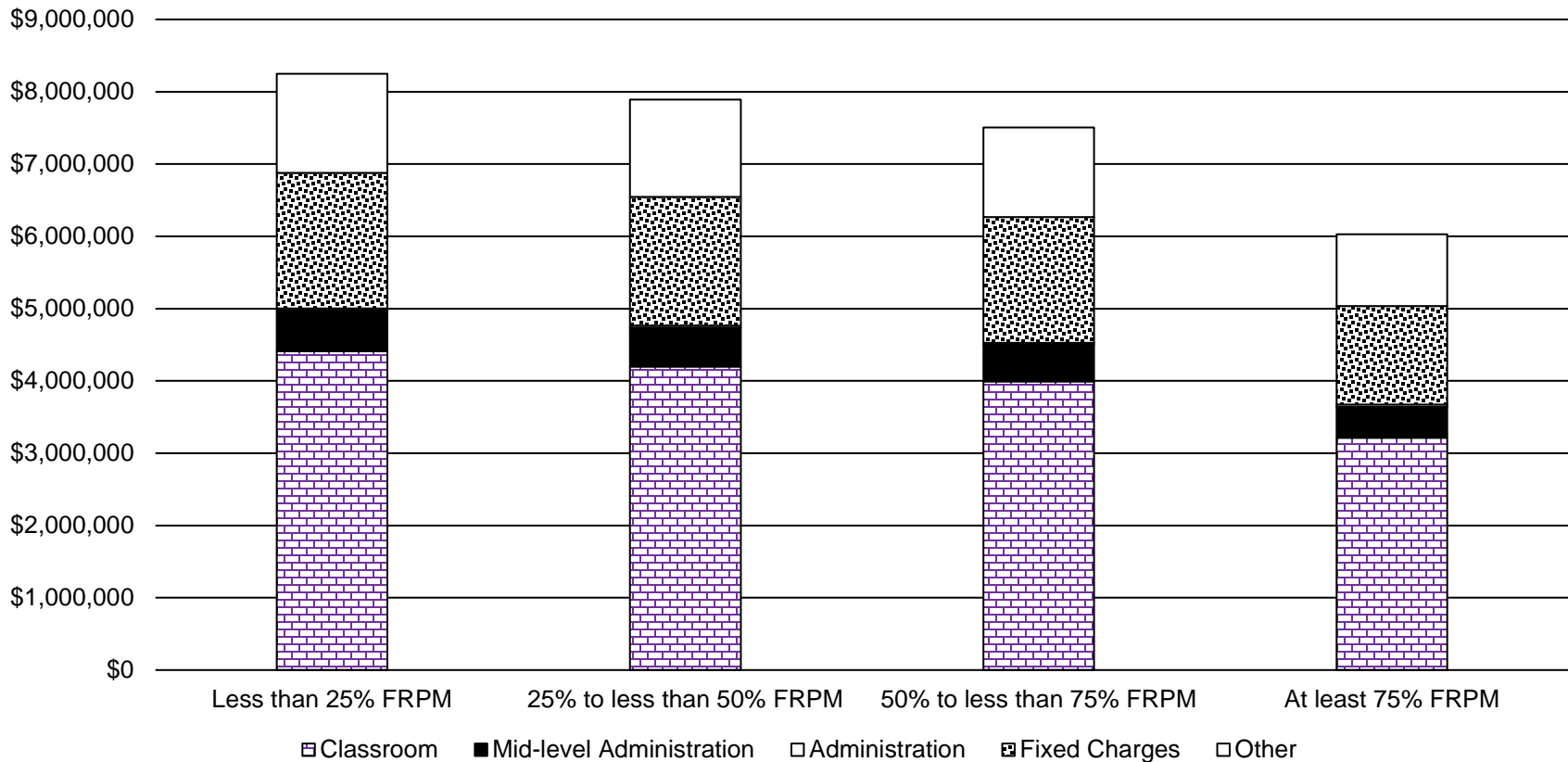
**Commission on Innovation and Excellence in Education**

---

**Follow-up Information from the  
October 25, 2017 Meeting**

**Department of Legislative Services  
December 11, 2017**

## Average Expenditures at a School by Free and Reduced-price Meals Concentration (Fiscal 2015)



FRPM: Free and Reduced-price Meals

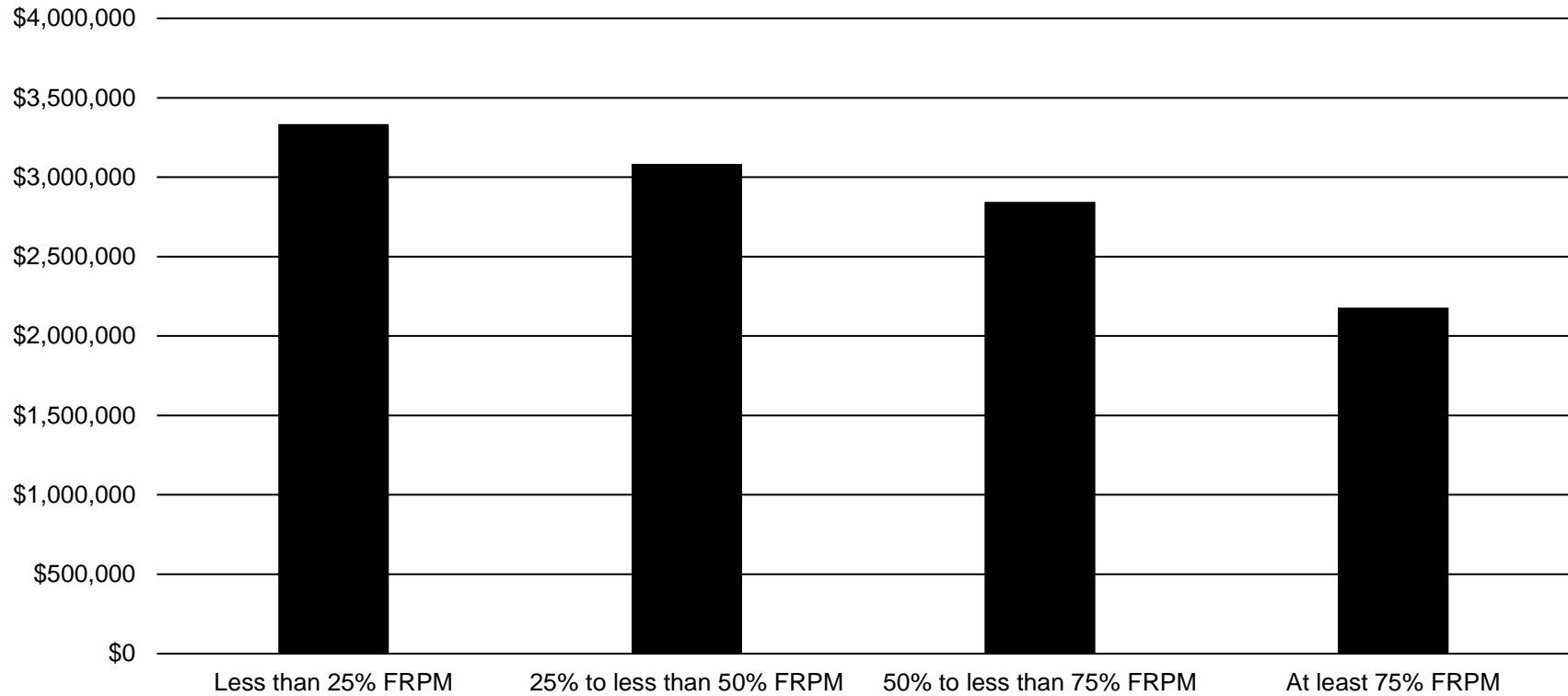
Classroom includes salaries for special education, nonspecial education, supplies, and other instruction related expenditures.

Fixed charges includes all expenditures for fixed charges as the data source does not break them out by program.

Other includes capital outlay, community service, student personnel, student health, transportation, and maintenance and operation of plant.

Source: Department of Legislative Services

## Average Instructional Salary Expenditures per School by Free and Reduced-price Meals Concentration (Fiscal 2015)

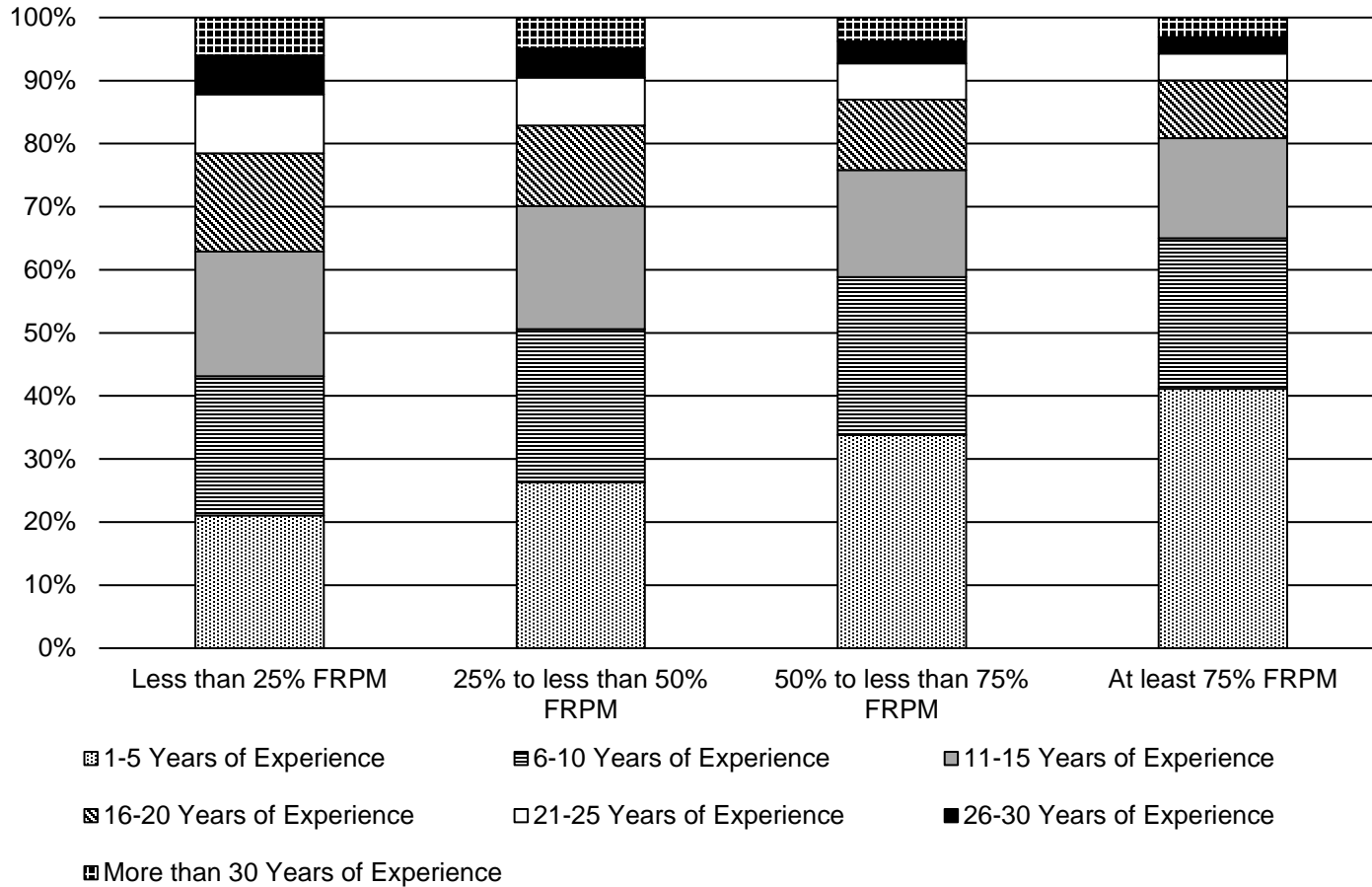


FRPM: Free and Reduced-price Meals

Note: Does not include fixed charges.

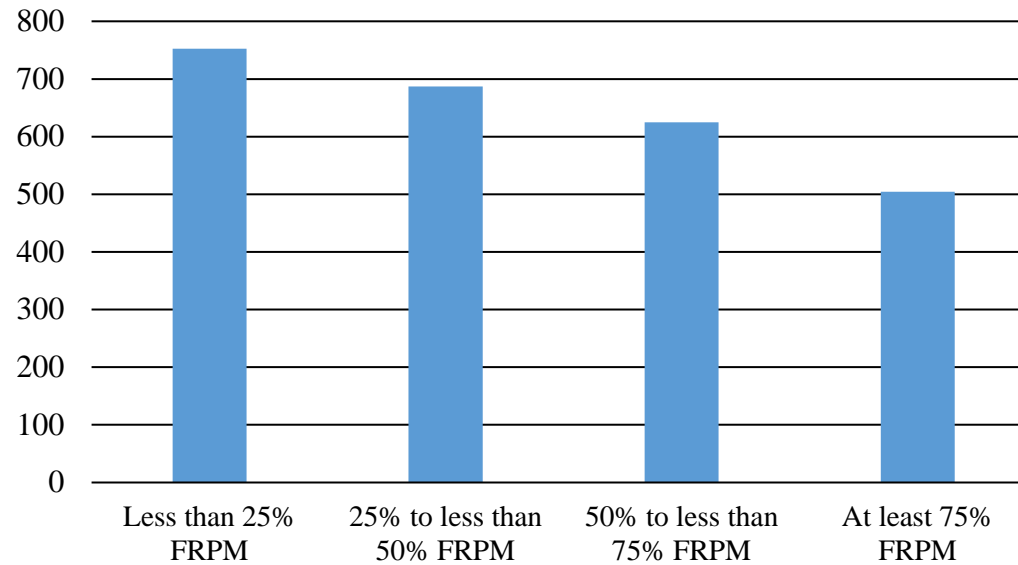
Source: Department of Legislative Services

## Teacher Experience Level Distribution at Schools by Free and Reduced-price Meals Concentration (Fiscal 2015)



FRPM: Free and Reduced-price Meals  
 Source: Department of Legislative Services

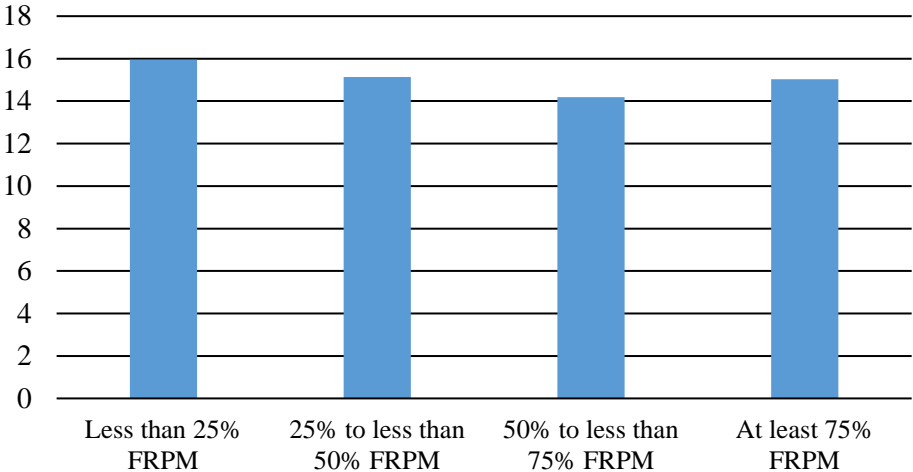
### Average Number of Students per School by FRPM Concentration (2015)



FRPM: free and reduced-price meal

Source: American Institutes for Research; Department of Legislative Services

### Student/Teacher Ratio by FRPM Concentration (2015)

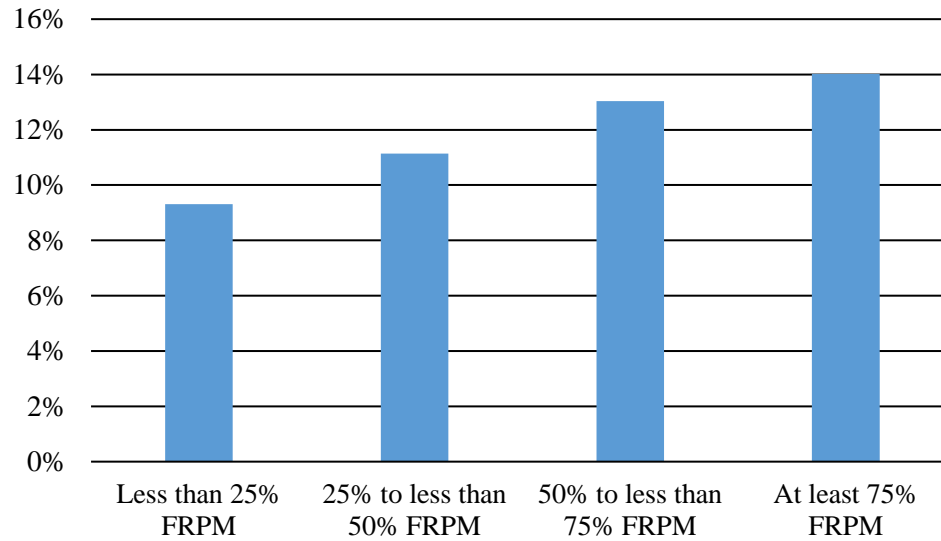


FRPM: free and reduced-price meal

Note: The ratios provided here are calculated by dividing total school enrollment within a FRPM category by the total number of teachers within the same category. Thus, the calculated ratios do not necessarily represent the student/teacher ratio within a typical classroom and should not be interpreted as such. Ratios were calculated using school-level enrollment data provided by AIR and school-level teacher staffing data from MSDE.

Source: American Institutes for Research; Maryland State Department of Education; Department of Legislative Services

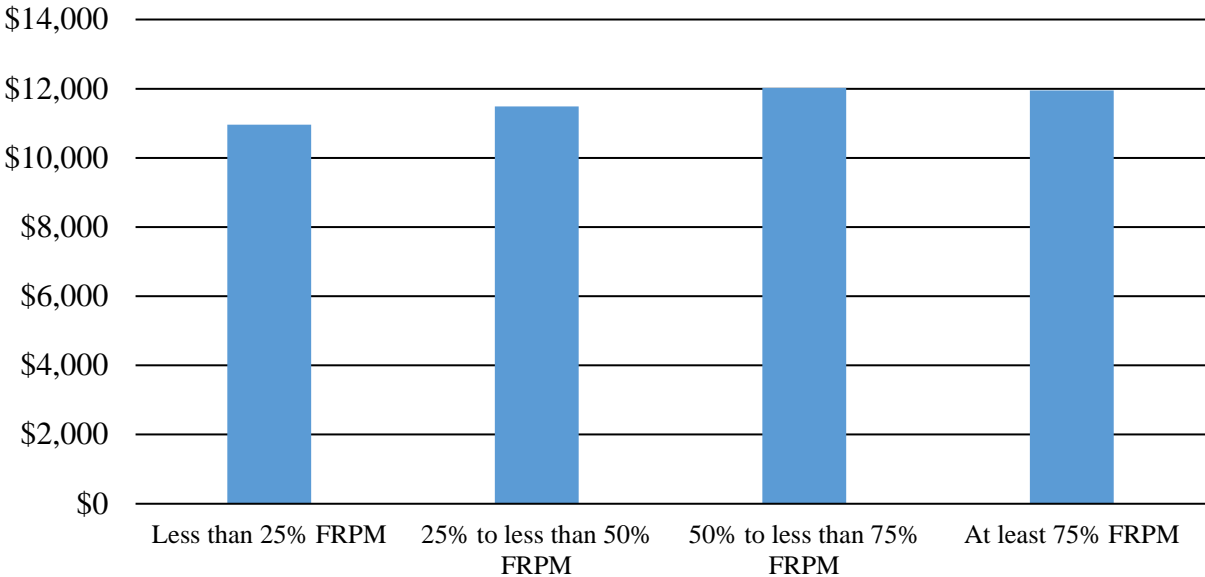
**Average Percentage of Special Education  
Students at Schools by FRPM Concentration  
(2015)**



FRPM: free and reduced-price meal

Source: American Institutes for Research; Department of Legislative Services

**Average Per Pupil Spending at Schools by FRPM Concentration (2015)**



FRPM: free and reduced-price meal

Source: American Institutes for Research; Department of Legislative Services