
County Revenue Outlook

Fiscal 2015

**Department of Legislative Services
Office of Policy Analysis
Annapolis, Maryland**

January 2015

For further information concerning this document contact:

Library and Information Services
Office of Policy Analysis
Department of Legislative Services
90 State Circle
Annapolis, Maryland 21401

Baltimore Area: 410-946-5400 • Washington Area: 301-970-5400

Other Areas: 1-800-492-7122, Extension 5400

TDD: 410-946-5401 • 301-970-5401

Maryland Relay Service: 1-800-735-2258

E-mail: libr@mlis.state.md.us

Home Page: <http://mgaleg.maryland.gov>

The Department of Legislative Services does not discriminate on the basis of age, ancestry, color, creed, marital status, national origin, race, religion, gender, gender identity, sexual orientation, or disability in the admission or access to its programs, services, or activities. The Department's Information Officer has been designated to coordinate compliance with the nondiscrimination requirements contained in Section 35.107 of the Department of Justice Regulations. Requests for assistance should be directed to the Information Officer at the telephone numbers shown above.

Contents

Limited Growth in Local Tax Revenues..... 1

Local Tax Revenue Inches Upward 2

Homestead Tax Credit Softened Impact on County Assessable Base..... 3

Estimated Assessable Base Loss Due to Homestead Property Tax Credit..... 4

County Tax Relief Due to Homestead Tax Credits..... 5

Homestead Tax Credit Impact on Property Tax (5% Homestead Tax Cap) 6

Homestead Tax Credit Impact on Property Tax (10% Homestead Tax Cap) 7

Actual County Property Tax Rates in Comparison to the Constant Yield Rate 8

Revenue Yield from Property Tax Rates Above Constant Yield..... 9

Revenue Loss from Property Tax Rates Below Constant Yield 10

Local Income Tax Revenues Mirror State Collections..... 11

Additional Revenue Yield from Imposing Maximum County Income Tax Rate..... 12

Real Estate Meltdown Impacts Recordation and Transfer Taxes..... 13

Appendices

Appendix 1. County Government Revenues – Fiscal 2013 14

Appendix 2. County Government Revenues – Fiscal 2014 15

Appendix 3. County Government Revenues – Fiscal 2015..... 16

Appendix 4. Property Tax Revenue Trend for Fiscal 2013-2015..... 17

Appendix 5. Local Income Tax Revenue Trend for Fiscal 2013-2015 18

Appendix 6. Recordation Tax Revenue Trend for Fiscal 2013-2015 19

Appendix 7. Transfer Tax Revenue Trend for Fiscal 2013-2015 20

Appendix 8. Hotel/Motel Tax Revenue Trend for Fiscal 2013-2015 21

Appendix 9. Admissions and Amusement Tax Revenue Trend for Fiscal 2013-2015 22

Appendix 10. Total Local Taxes for Fiscal 2013-2015..... 23

Appendix 11. Total General Fund Revenues for Fiscal 2013-2015 24

Appendix 12. County Assessable Base – Real Property Tax Base 25

Appendix 13. County Assessable Base – Real Property Tax Base (Annual Percent Change)..... 26

Appendix 14. Assessable Base Loss Due to Homestead Tax Credit 27

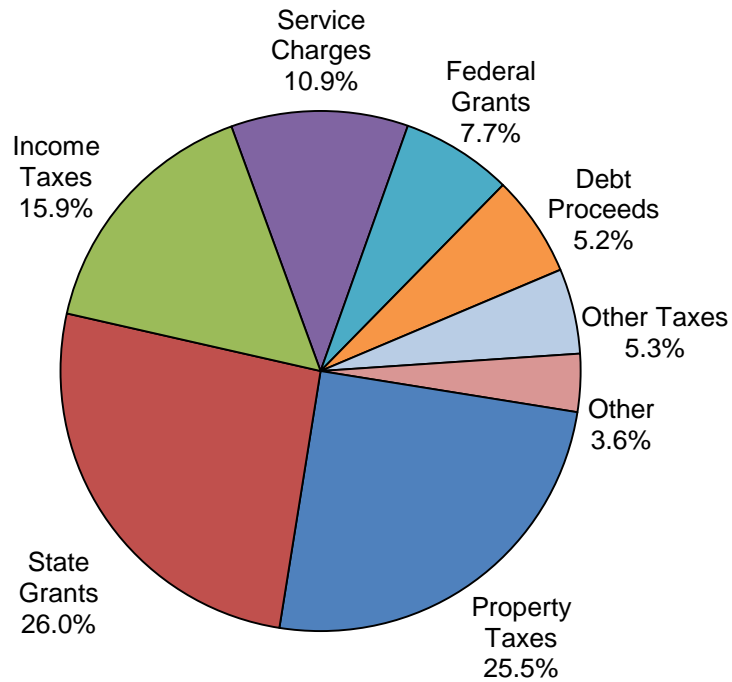
Appendix 15. Assessable Base Loss Due to Homestead Tax Credit (Percent of Real Property Base)..... 28

Appendix 16. County Assessable Base – Real Property Adjusted for Homestead Tax Credit 29

Appendix 17. County Assessable Base – Real Property Adjusted for Homestead Tax Credit
(Annual Percent Change)..... 30

Limited Growth in Local Tax Revenues Fiscal 2014 and 2015

Sources of Revenue
Counties and Baltimore City



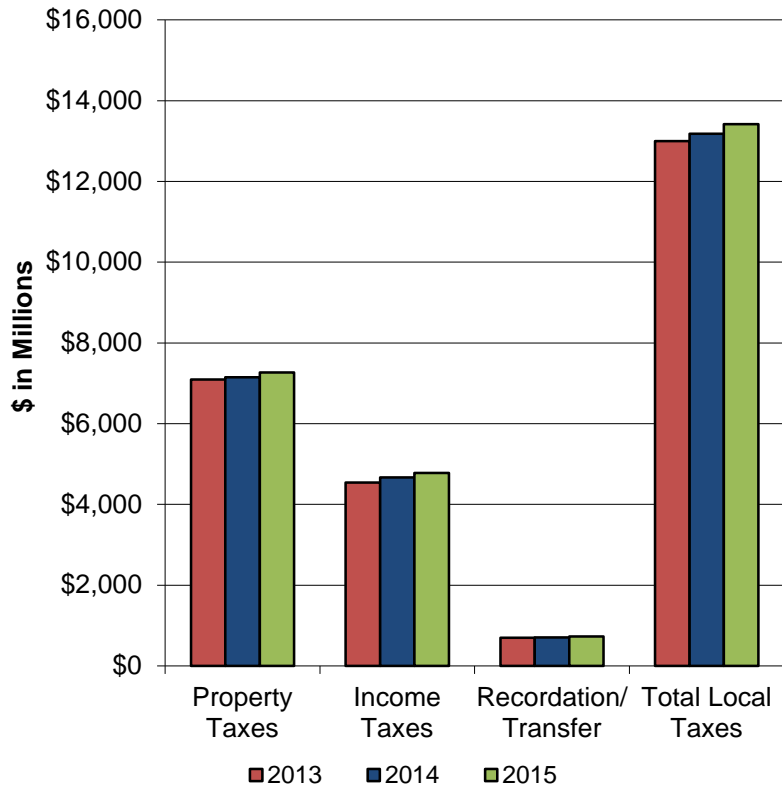
FY 2013 = \$28.6 Billion

Annual Percent Change

	<u>FY 2013-14</u>	<u>FY 2014-15</u>	<u>Two-year Average</u>
Property Taxes	0.8%	1.6%	1.2%
Income Taxes	2.9%	2.3%	2.6%
Recordation Taxes	-4.0%	6.0%	0.9%
Transfer Taxes	6.7%	0.4%	3.5%
Hotel/Motel Taxes	-1.0%	0.9%	-0.1%
Admissions Taxes	-2.2%	6.2%	1.9%
<hr/>			
Total Local Taxes	1.4%	1.8%	1.6%
General Fund Revenues	2.2%	2.4%	2.3%

Source: Department of Legislative Services, County Budgets

Local Tax Revenue Inches Upward Fiscal 2013-2015 (\$ in Millions)



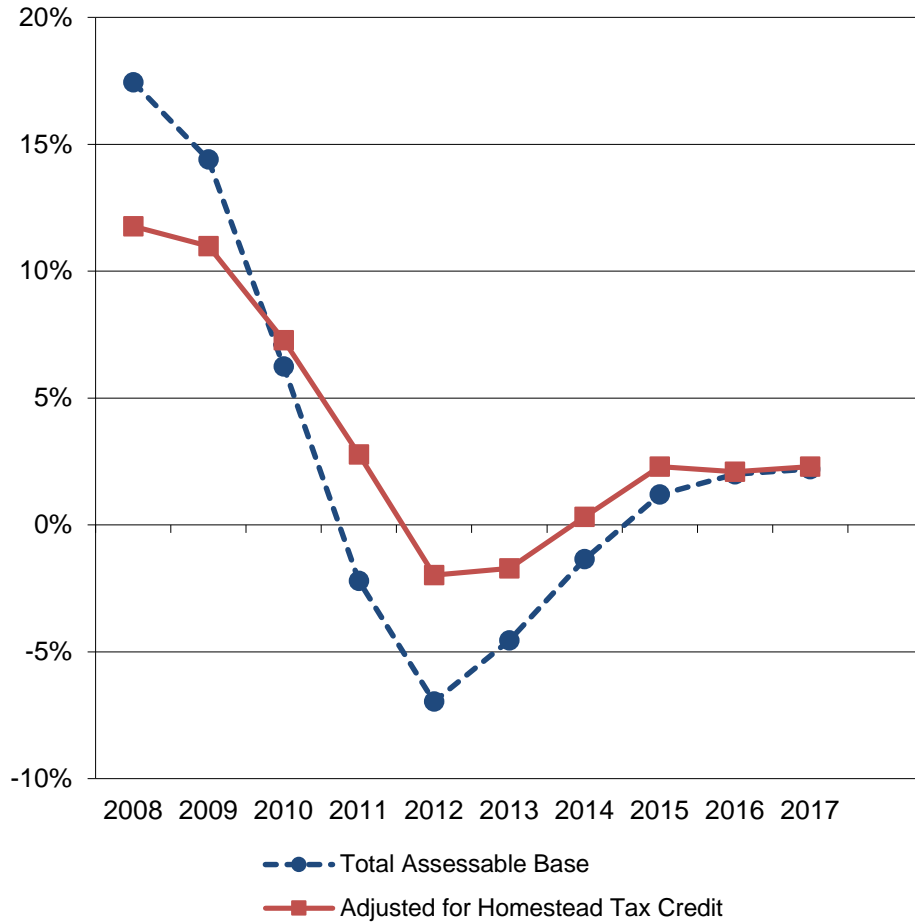
Fiscal 2013	
Property Taxes	\$7,095.1
Income Taxes	4,538.1
Recordation/Transfer	694.7
Total Local Taxes	\$13,002.2

Fiscal 2014	
Property Taxes	\$7,151.0
Income Taxes	4,669.5
Recordation/Transfer	701.8
Total Local Taxes	\$13,180.9

Fiscal 2015	
Property Taxes	\$7,268.2
Income Taxes	4,776.0
Recordation/Transfer	724.6
Total Local Taxes	\$13,422.4

Source: Department of Legislative Services, County Budgets

Homestead Tax Credit Softened Impact on County Assessable Base



Real Property Assessable Base (\$ in Thousands)		
FY 2007	\$525,073,581	
FY 2008	616,682,254	17.4%
FY 2009	705,485,547	14.4%
FY 2010	749,554,984	6.2%
FY 2011	733,059,499	-2.2%
FY 2012	682,053,614	-7.0%
FY 2013	651,053,089	-4.5%
FY 2014	642,258,648	-1.4%
FY 2015	649,887,601	1.2%
FY 2016	662,911,848	2.0%
FY 2017	677,530,778	2.2%

Adjusted for Homestead Tax Credit (\$ in Thousands)		
FY 2007	\$467,758,384	
FY 2008	522,797,391	11.8%
FY 2009	580,258,229	11.0%
FY 2010	622,516,493	7.3%
FY 2011	639,831,959	2.8%
FY 2012	627,152,668	-2.0%
FY 2013	616,427,411	-1.7%
FY 2014	618,432,179	0.3%
FY 2015	632,800,262	2.3%
FY 2016	646,334,950	2.1%
FY 2017	661,153,678	2.3%

Source: Department of Legislative Services, County Budgets

**Estimated Assessable Base Loss Due to Homestead Property Tax Credit
Fiscal 2015
(\$ in Thousands)**

County	Total County Assessable Base	Loss Due to 10% Homestead Cap	After 10% Homestead Cap	Percent Lost	Loss Due to Actual Homestead Cap	After Actual Homestead Cap	Percent Lost
Allegany	\$3,547,929	\$2,710	\$3,545,219	0.1%	\$7,321	\$3,540,608	0.2%
Anne Arundel	75,319,059	35,541	75,283,518	0.0%	8,564,128	66,754,931	11.4%
Baltimore City	33,877,108	270,216	33,606,892	0.8%	1,970,097	31,907,011	5.8%
Baltimore	75,084,608	16,510	75,068,098	0.0%	1,607,788	73,476,820	2.1%
Calvert	11,274,400	1,607	11,272,793	0.0%	1,607	11,272,793	0.0%
Caroline	2,499,663	1,873	2,497,790	0.1%	18,054	2,481,609	0.7%
Carroll	17,967,373	1,505	17,965,868	0.0%	21,240	17,946,133	0.1%
Cecil	9,252,797	1,009	9,251,788	0.0%	2,270	9,250,527	0.0%
Charles	15,465,732	1,176	15,464,556	0.0%	7,217	15,458,515	0.0%
Dorchester	2,782,627	2,579	2,780,048	0.1%	28,667	2,753,960	1.0%
Frederick	25,856,626	4,332	25,852,294	0.0%	43,155	25,813,471	0.2%
Garrett	4,260,262	3,246	4,257,016	0.1%	35,692	4,224,570	0.8%
Harford	25,695,399	1,716	25,693,683	0.0%	9,256	25,686,143	0.0%
Howard	43,875,445	6,591	43,868,854	0.0%	626,948	43,248,497	1.4%
Kent	2,909,297	7,422	2,901,875	0.3%	78,858	2,830,439	2.7%
Montgomery	165,097,133	115,441	164,981,692	0.1%	115,441	164,981,692	0.1%
Prince George's	73,896,653	11,829	73,884,824	0.0%	2,036,126	71,860,527	2.8%
Queen Anne's	7,582,753	4,211	7,578,542	0.1%	102,982	7,479,771	1.4%
St. Mary's	11,801,792	12,816	11,788,976	0.1%	195,110	11,606,682	1.7%
Somerset	1,357,895	1,142	1,356,753	0.1%	1,142	1,356,753	0.1%
Talbot	8,470,761	4,272	8,466,489	0.1%	1,418,924	7,051,837	16.8%
Washington	11,794,130	1,440	11,792,690	0.0%	19,132	11,774,998	0.2%
Wicomico	5,690,278	1,061	5,689,217	0.0%	2,632	5,687,646	0.0%
Worcester	14,527,882	4,479	14,523,403	0.0%	173,552	14,354,330	1.2%
Total	\$649,887,601	\$514,724	\$649,372,877	0.1%	\$17,087,339	\$632,800,262	2.6%

Source: State Department of Assessments and Taxation

County Tax Relief Due to Homestead Tax Credits

County	Fiscal 2014		Fiscal 2015		Fiscal 2016	
	Revenue Foregone	Percent of Base	Revenue Foregone	Percent of Base	Revenue Foregone	Percent of Base
Allegany	\$161,014	0.5%	\$71,673	0.2%	\$49,939	0.1%
Anne Arundel	98,978,154	14.1%	80,759,727	11.4%	81,858,614	11.2%
Baltimore City	66,410,753	9.1%	44,287,781	5.8%	40,360,367	5.4%
Baltimore	34,694,924	4.2%	17,685,668	2.1%	13,363,834	1.6%
Calvert	47,847	0.0%	14,334	0.0%	7,359	0.0%
Caroline	352,998	1.5%	173,318	0.7%	115,632	0.5%
Carroll	631,567	0.3%	216,223	0.1%	184,319	0.1%
Cecil	49,684	0.1%	22,489	0.0%	15,544	0.0%
Charles	271,932	0.1%	86,965	0.0%	69,348	0.0%
Dorchester	535,892	1.9%	279,790	1.0%	184,523	0.7%
Frederick	899,399	0.3%	457,443	0.2%	524,329	0.2%
Garrett	858,647	1.9%	353,351	0.8%	254,499	0.6%
Harford	183,402	0.1%	96,448	0.0%	77,764	0.0%
Howard	13,391,213	2.6%	7,460,681	1.4%	5,714,249	1.1%
Kent	1,451,986	4.8%	805,929	2.7%	643,114	2.2%
Montgomery	1,194,693	0.1%	1,163,645	0.1%	834,846	0.0%
Prince George's	37,413,356	3.9%	26,856,502	2.8%	32,241,755	3.3%
Queen Anne's	1,748,381	2.7%	872,361	1.4%	476,079	0.7%
St. Mary's	3,445,174	3.4%	1,672,093	1.7%	1,111,400	1.1%
Somerset	34,642	0.3%	10,449	0.1%	8,144	0.1%
Talbot	8,834,964	19.6%	7,477,729	16.8%	6,924,885	15.8%
Washington	428,278	0.4%	181,371	0.2%	124,880	0.1%
Wicomico	42,940	0.1%	25,046	0.0%	46,343	0.1%
Worcester	2,295,516	2.1%	1,336,350	1.2%	1,169,068	1.1%
Statewide	\$274,357,357	3.7%	\$192,367,366	2.6%	\$186,360,834	2.5%

Source: State Department of Assessments and Taxation

Homestead Tax Credit Impact on Property Tax Sample Property Triennial Valuation History

Actual Market Value of Assessed Property

<u>January 2000</u>	<u>January 2003</u>	<u>January 2006</u>	<u>January 2009</u>
\$200,000	\$245,000	\$455,000	\$425,000
	22.5%	85.7%	-6.6%

Resulting Annual Tax Assessment Liability from 5% Homestead Tax Cap

<u>Tax Year</u>	<u>Phased-in Assessment</u>	<u>Taxable Assessment</u>	<u>Homestead Credit Assessment</u>
July 2002	\$200,000	\$200,000	\$0
July 2003	215,000	210,000	5,000
July 2004	230,000	220,500	9,500
July 2005	245,000	231,525	13,475
July 2006	315,000	243,101	71,899
July 2007	385,000	255,256	129,744
July 2008	455,000	268,019	186,981
July 2009	425,000	281,420	143,580
July 2010	425,000	295,491	129,509
July 2011	425,000	310,266	114,734

Source: Department of Legislative Services

Homestead Tax Credit Impact on Property Tax Sample Property Triennial Valuation History

Actual Market Value of Assessed Property

<u>January 2000</u>	<u>January 2003</u>	<u>January 2006</u>	<u>January 2009</u>
\$200,000	\$245,000	\$455,000	\$425,000
	22.5%	85.7%	-6.6%

Resulting Annual Tax Assessment Liability from 10% Homestead Tax Cap

<u>Tax Year</u>	<u>Phased-in Assessment</u>	<u>Taxable Assessment</u>	<u>Homestead Credit Assessment</u>
July 2002	\$200,000	\$200,000	\$0
July 2003	215,000	215,000	0
July 2004	230,000	230,000	0
July 2005	245,000	245,000	0
July 2006	315,000	269,500	45,500
July 2007	385,000	296,450	88,550
July 2008	455,000	326,095	128,905
July 2009	425,000	358,705	66,296
July 2010	425,000	394,575	30,425
July 2011	425,000	425,000	0

Source: Department of Legislative Services

Actual County Property Tax Rates in Comparison to the Constant Yield Rate

County	Actual FY 2014	Actual FY 2015	Difference	Constant Yield Rate	Difference	Amount in Excess of Constant Yield Ranking by Highest to Lowest		
Allegany	\$0.980	\$0.979	-\$0.001	\$0.973	\$0.006	1.	Baltimore City	\$0.045
Anne Arundel	0.950	0.943	-0.007	0.928	0.015	2.	Howard	0.024
Baltimore City	2.248	2.248	0.000	2.203	0.045	3.	Anne Arundel	0.015
Baltimore	1.100	1.100	0.000	1.092	0.008	4.	Prince George's	0.014
Calvert	0.892	0.892	0.000	0.902	-0.010	5.	Wicomico	0.014
Caroline	0.940	0.960	0.020	0.955	0.005	6.	Baltimore	0.008
Carroll	1.018	1.018	0.000	1.029	-0.011	7.	Allegany	0.006
Cecil	0.991	0.991	0.000	1.004	-0.013	8.	Caroline	0.005
Charles*	1.205	1.205	0.000	1.221	-0.016	9.	St. Mary's	0.004
Dorchester	0.976	0.976	0.000	0.978	-0.002	10.	Montgomery	0.002
Frederick	1.064	1.060	-0.004	1.060	0.000	11.	Talbot	0.002
Garrett	0.990	0.990	0.000	1.071	-0.081	12.	Frederick	0.000
Harford	1.042	1.042	0.000	1.048	-0.006	13.	Washington	-0.001
Howard*	1.190	1.190	0.000	1.166	0.024	14.	Dorchester	-0.002
Kent	1.022	1.022	0.000	1.026	-0.004	15.	Kent	-0.004
Montgomery*	1.021	1.008	-0.013	1.006	0.002	16.	Queen Anne's	-0.006
Prince George's*	1.319	1.319	0.000	1.305	0.014	17.	Harford	-0.006
Queen Anne's	0.847	0.847	0.000	0.853	-0.006	18.	Worcester	-0.007
St. Mary's	0.857	0.857	0.000	0.853	0.004	19.	Calvert	-0.010
Somerset	0.915	0.915	0.000	0.963	-0.048	20.	Carroll	-0.011
Talbot	0.512	0.527	0.015	0.525	0.002	21.	Cecil	-0.013
Washington	0.948	0.948	0.000	0.949	-0.001	22.	Charles	-0.016
Wicomico	0.909	0.952	0.043	0.938	0.014	23.	Somerset	-0.048
Worcester	0.770	0.770	0.000	0.777	-0.007	24.	Garrett	-0.081

*Includes Special Property Tax Rates

Source: State Department of Assessments and Taxation; Department of Legislative Services

Revenue Yield from Property Tax Rates Above Constant Yield Fiscal 2015

County	Assessable Base	Actual Rate	Constant Yield Rate	Difference	Estimated Revenue Yield	Per Capita Yield
Allegany	\$3,539,097,143	\$0.979	\$0.973	\$0.006	\$205,000	\$2.79
Anne Arundel	61,022,458,646	0.943	0.928	0.015	9,153,000	16.47
Baltimore City	31,285,540,023	2.248	2.203	0.045	14,078,000	22.63
Baltimore	72,771,304,603	1.100	1.092	0.008	5,822,000	7.07
Calvert	11,182,385,833	0.892	0.902	-0.010	0	0.00
Caroline	2,460,402,270	0.960	0.955	0.005	123,000	3.76
Carroll	17,703,793,311	1.018	1.029	-0.011	0	0.00
Cecil	9,168,304,467	0.991	1.004	-0.013	0	0.00
Charles*	15,167,929,784	1.205	1.221	-0.016	0	0.00
Dorchester	2,769,541,399	0.976	0.978	-0.002	0	0.00
Frederick	25,218,647,017	1.060	1.060	0.000	0	0.00
Garrett	4,201,159,063	0.990	1.071	-0.081	0	0.00
Harford	25,405,468,523	1.042	1.048	-0.006	0	0.00
Howard*	42,396,341,000	1.190	1.166	0.024	10,363,000	34.02
Kent	2,821,336,757	1.022	1.026	-0.004	0	0.00
Montgomery*	163,243,821,393	1.008	1.006	0.002	4,053,000	3.99
Prince George's*	70,143,126,495	1.319	1.305	0.014	9,652,000	10.84
Queen Anne's	7,396,201,881	0.847	0.853	-0.006	0	0.00
St. Mary's	11,472,104,820	0.857	0.853	0.004	459,000	4.19
Somerset	1,342,968,212	0.915	0.963	-0.048	0	0.00
Talbot	6,965,136,260	0.527	0.525	0.002	139,000	3.66
Washington	11,623,467,431	0.948	0.949	-0.001	0	0.00
Wicomico	5,632,599,187	0.952	0.938	0.014	766,000	7.59
Worcester	14,315,812,587	0.770	0.777	-0.007	0	0.00
Total	\$619,248,948,105				\$54,813,000	\$9.25

*Includes Special Property Tax Rates

Source: State Department of Assessments and Taxation; Department of Legislative Services

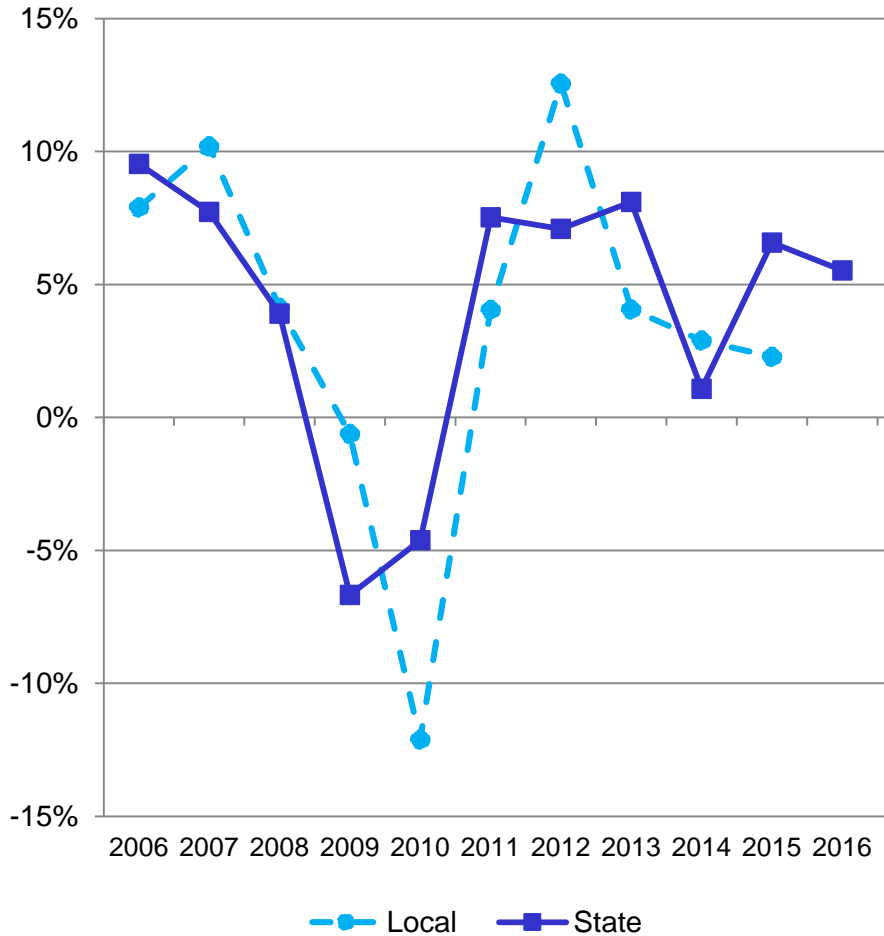
Revenue Loss from Property Tax Rates Below Constant Yield Fiscal 2015

County	Assessable Base	Actual Rate	Constant Yield Rate	Difference	Estimated Revenue Loss	Per Capita Loss
Allegany	\$3,539,097,143	\$0.979	\$0.973	\$0.006	\$0	\$0.00
Anne Arundel	61,022,458,646	0.943	0.928	0.015	0	0.00
Baltimore City	31,285,540,023	2.248	2.203	0.045	0	0.00
Baltimore	72,771,304,603	1.100	1.092	0.008	0	0.00
Calvert	11,182,385,833	0.892	0.902	-0.010	-1,118,000	-12.36
Caroline	2,460,402,270	0.960	0.955	0.005	0	0.00
Carroll	17,703,793,311	1.018	1.029	-0.011	-1,947,000	-11.62
Cecil	9,168,304,467	0.991	1.004	-0.013	-1,219,000	-11.96
Charles*	15,167,929,784	1.205	1.221	-0.016	-2,427,000	-15.88
Dorchester	2,769,541,399	0.976	0.978	-0.002	-55,000	-1.68
Frederick	25,218,647,017	1.060	1.060	0.000	0	0.00
Garrett	4,201,159,063	0.990	1.071	-0.081	-3,403,000	-113.85
Harford	25,405,468,523	1.042	1.048	-0.006	-1,524,000	-6.12
Howard*	42,396,341,000	1.190	1.166	0.024	0	0.00
Kent	2,821,336,757	1.022	1.026	-0.004	-113,000	-5.67
Montgomery*	163,243,821,393	1.008	1.006	0.002	0	0.00
Prince George's*	70,143,126,495	1.319	1.305	0.014	0	0.00
Queen Anne's	7,396,201,881	0.847	0.853	-0.006	-436,000	-8.99
St. Mary's	11,472,104,820	0.857	0.853	0.004	0	0.00
Somerset	1,342,968,212	0.915	0.963	-0.048	-645,000	-24.55
Talbot	6,965,136,260	0.527	0.525	0.002	0	0.00
Washington	11,623,467,431	0.948	0.949	-0.001	-116,000	-0.78
Wicomico	5,632,599,187	0.952	0.938	0.014	0	0.00
Worcester	14,315,812,587	0.770	0.777	-0.007	-1,002,000	-19.41
Total	\$619,248,948,105				-\$14,005,000	-\$2.36

*Includes Special Property Tax Rates

Source: State Department of Assessments and Taxation; Department of Legislative Services

Local Income Tax Revenues Mirror State Collections



Local Income Tax Revenues (\$ in Millions)		
FY 2006	\$3,715.2	7.9%
FY 2007	4,094.2	10.2%
FY 2008	4,262.9	4.1%
FY 2009	4,236.7	-0.6%
FY 2010	3,723.3	-12.1%
FY 2011	3,874.1	4.1%
FY 2012	4,360.7	12.6%
FY 2013	4,538.1	4.1%
FY 2014	4,669.5	2.9%
FY 2015	4,776.0	2.3%

State Income Tax Revenues (\$ in Millions)		
FY 2006	\$6,200.2	9.5%
FY 2007	6,679.2	7.7%
FY 2008	6,940.1	3.9%
FY 2009	6,477.2	-6.7%
FY 2010	6,178.2	-4.6%
FY 2011	6,643.4	7.5%
FY 2012	7,114.7	7.1%
FY 2013	7,691.4	8.1%
FY 2014	7,773.8	1.1%
FY 2015	8,284.9	6.6%
FY 2016	8,743.4	5.5%

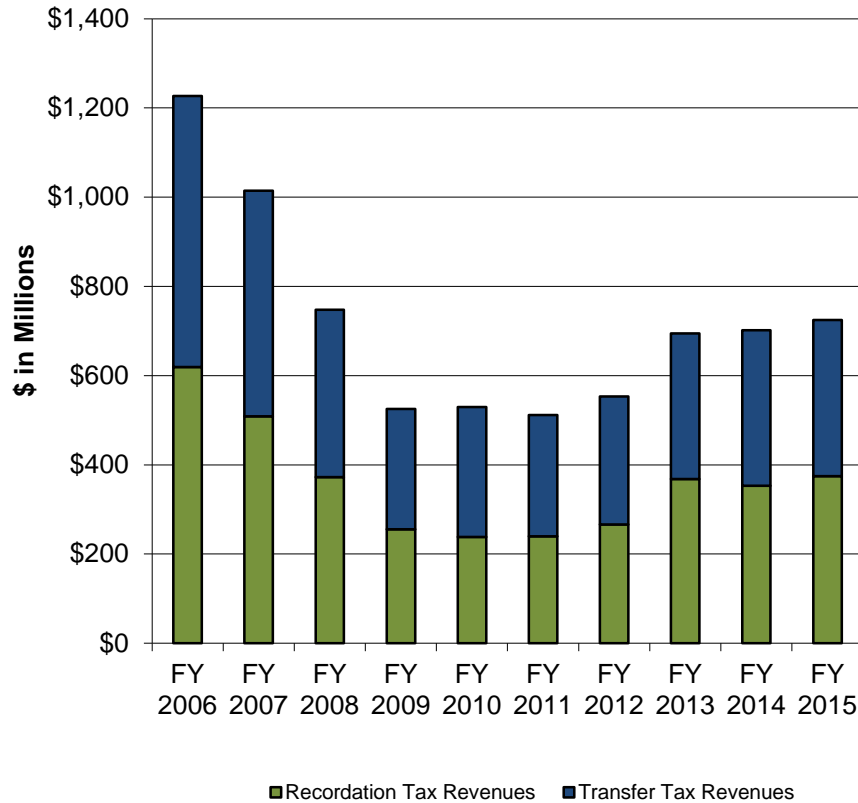
Source: Department of Legislative Services, County Budgets

Additional Revenue Yield from Imposing Maximum County Income Tax Rate Fiscal 2015 – Projected Revenues

County	Population	County Income Tax Revenues	County Income Tax Rate	Potential Rate Increase	Additional Revenue Yield	Per Capita Amount
Allegany	73,521	\$23,675,889	3.05%	0.15%	\$1,164,400	\$15.84
Anne Arundel	555,743	437,600,000	2.56%	0.64%	109,400,000	196.85
Baltimore City	622,104	286,688,762	3.20%	0.00%	0	0.00
Baltimore	823,015	687,771,310	2.83%	0.37%	89,920,600	109.26
Calvert	90,484	75,016,690	2.80%	0.40%	10,716,700	118.44
Caroline	32,693	11,500,000	2.73%	0.47%	1,979,900	60.56
Carroll	167,564	135,918,119	3.03%	0.17%	7,625,800	45.51
Cecil	101,913	53,643,746	2.80%	0.40%	7,663,400	75.20
Charles	152,864	110,215,000	3.03%	0.17%	6,183,700	40.45
Dorchester	32,660	10,621,373	2.62%	0.58%	2,351,300	71.99
Frederick	241,409	182,535,800	2.96%	0.24%	14,800,200	61.31
Garrett	29,889	10,600,000	2.65%	0.55%	2,200,000	73.61
Harford	249,215	198,729,650	3.06%	0.14%	9,092,200	36.48
Howard	304,580	408,779,715	3.20%	0.00%	0	0.00
Kent	19,944	11,250,000	2.85%	0.35%	1,381,600	69.27
Montgomery	1,016,677	1,340,644,366	3.20%	0.00%	0	0.00
Prince George's	890,081	506,557,700	3.20%	0.00%	0	0.00
Queen Anne's	48,517	41,878,992	3.20%	0.00%	0	0.00
St. Mary's	109,633	85,200,000	3.00%	0.20%	5,680,000	51.81
Somerset	26,273	6,100,000	3.15%	0.05%	96,800	3.68
Talbot	37,931	26,600,000	2.40%	0.80%	8,866,700	233.76
Washington	149,588	72,230,000	2.80%	0.40%	10,318,600	68.98
Wicomico	100,896	39,561,266	3.20%	0.00%	0	0.00
Worcester	51,620	12,700,000	1.25%	1.95%	19,812,000	383.80
Total	5,928,814	\$4,776,018,378			\$309,253,900	\$52.16

Source: Department of Legislative Services

Real Estate Meltdown Impacts Recordation and Transfer Taxes



Local Recordation Tax Revenues (\$ in Millions)

FY 2006	\$619.0	17.8%
FY 2007	508.5	-17.8%
FY 2008	372.3	-26.8%
FY 2009	255.6	-31.3%
FY 2010	237.9	-6.9%
FY 2011	239.6	0.7%
FY 2012	266.2	11.1%
FY 2013	367.9	38.2%
FY 2014	353.2	-4.0%
FY 2015	374.6	6.0%

Local Transfer Tax Revenues (\$ in Millions)

FY 2006	\$607.8	18.8%
FY 2007	506.2	-16.7%
FY 2008	375.1	-25.9%
FY 2009	269.5	-28.2%
FY 2010	291.6	8.2%
FY 2011	272.1	-6.7%
FY 2012	286.8	5.4%
FY 2013	326.8	13.9%
FY 2014	348.5	6.7%
FY 2015	350.0	0.4%

Source: Department of Legislative Services, County Budgets

Appendix 1

County Government Revenues – Fiscal 2013

<u>County</u>	<u>Property Tax</u>	<u>Income Tax</u>	<u>Recordation Tax</u>	<u>Transfer Tax</u>	<u>Hotel/Motel Tax</u>	<u>Admissions/ Amusement Tax</u>	<u>Other Local Taxes</u>	<u>Total Local Taxes</u>	<u>Total GF Revenues</u>
Allegany	\$40,302,290	\$24,249,252	\$1,692,145	\$300,696	\$787,579	\$250,167	\$566,619	\$68,148,748	\$83,062,894
Anne Arundel	621,955,030	407,582,398	42,040,038	38,996,647	13,653,147	8,407,658	19,036,799	1,151,671,717	1,241,491,489
Baltimore City	759,221,334	276,111,244	32,329,642	27,506,213	30,288,038	9,161,053	88,165,116	1,222,782,640	1,616,563,853
Baltimore	853,859,722	624,060,806	30,578,527	52,962,566	8,755,231	5,302,949	30,439,658	1,605,959,459	1,639,365,067
Calvert	141,281,902	64,127,088	5,909,376	0	634,973	29,720	1,512,743	213,495,802	225,888,960
Caroline	24,106,972	11,103,026	1,301,909	377,400	40,415	0	229,103	37,158,825	43,151,824
Carroll	198,426,541	127,555,768	9,955,395	63,462	278,906	296,932	2,346,806	338,923,810	374,491,438
Cecil	104,235,995	50,421,108	5,535,807	23,946	88,585	130,424	435,163	160,871,028	171,303,776
Charles	200,012,954	99,440,598	11,104,089	0	987,960	796,989	75,459	312,418,049	339,185,434
Dorchester	31,930,405	9,692,631	1,434,291	619,002	291,432	445	278,125	44,246,331	49,868,833
Frederick	261,007,403	176,068,392	24,339,679	0	1,221,602	525,352	1,486,422	464,648,850	450,900,530
Garrett	49,609,030	11,206,954	2,386,470	1,424,217	2,006,797	686,667	523,963	67,844,098	77,669,241
Harford	287,888,796	183,317,187	10,699,395	10,854,827	0	533,606	0	493,293,811	551,489,856
Howard	525,266,975	374,358,092	21,837,593	25,253,440	4,404,564	2,136,733	598,508	953,855,905	913,609,816
Kent	30,174,622	11,047,174	962,237	451,355	122,535	10,404	129,941	42,898,268	45,244,989
Montgomery	1,486,018,769	1,317,533,090	104,597,908	85,409,703	18,910,872	3,178,502	269,645,241	3,285,294,085	2,892,526,313
Prince George's	962,314,406	505,266,237	30,641,413	69,475,489	4,960,813	13,415,947	99,529,944	1,685,604,249	1,611,164,341
Queen Anne's	64,057,050	39,438,906	4,614,108	1,351,064	470,139	160,516	1,459,609	111,551,392	117,101,830
St. Mary's	100,809,676	76,746,270	5,688,996	4,268,826	872,533	84,269	2,443,828	190,914,398	211,219,671
Somerset	14,822,293	6,123,153	441,941	0	58,106	16,292	0	21,461,785	31,081,548
Talbot	32,741,855	23,140,754	5,493,728	3,024,512	1,096,821	47,184	64,799	65,609,653	71,090,060
Washington	122,470,175	65,763,209	5,213,999	1,484,247	1,876,044	308,149	461,753	197,577,576	216,327,781
Wicomico	60,969,775	41,027,904	2,502,251	0	1,089,928	157,103	900,946	106,647,907	117,327,313
Worcester	121,570,804	12,676,852	6,648,659	2,912,622	13,632,597	481,879	1,371,584	159,294,997	173,128,742
Total	\$7,095,054,774	\$4,538,058,093	\$367,949,596	\$326,760,234	\$106,529,617	\$46,118,940	\$521,702,129	\$13,002,173,383	\$13,264,255,599

Note: Property tax revenues for Charles, Frederick, and Howard counties include special fire district tax. Property tax revenues for Montgomery County include special fire, mass transit, and recreation district taxes.

Source: Department of Legislative Services, County Budgets

Appendix 2

County Government Revenues – Fiscal 2014

<u>County</u>	<u>Property Tax</u>	<u>Income Tax</u>	<u>Recordation Tax</u>	<u>Transfer Tax</u>	<u>Hotel/Motel Tax</u>	<u>Admissions/ Amusement Tax</u>	<u>Other Local Taxes</u>	<u>Total Local Taxes</u>	<u>Total GF Revenues</u>
Allegany	\$43,924,995	\$24,112,733	\$1,643,304	\$478,515	\$909,959	\$164,229	\$494,659	\$71,728,394	\$82,667,432
Anne Arundel	641,277,200	419,400,000	38,000,000	38,000,000	12,690,000	8,800,000	18,840,000	1,177,007,200	1,317,882,300
Baltimore City	755,756,001	274,844,674	35,000,000	35,000,000	32,200,000	8,653,000	84,752,525	1,226,206,200	1,642,569,873
Baltimore	853,891,460	663,137,560	24,620,000	52,000,000	8,150,000	5,582,000	29,411,000	1,636,792,020	1,736,491,528
Calvert	138,400,000	66,126,000	6,171,000	0	560,000	15,800	1,327,000	212,599,800	224,217,018
Caroline	24,572,670	11,461,356	1,104,166	344,652	40,500	0	225,702	37,749,046	43,311,140
Carroll	196,094,923	131,533,099	10,576,850	25,000	290,720	262,098	2,145,376	340,928,066	369,581,974
Cecil	103,472,770	50,800,381	4,617,831	25,009	95,649	125,242	475,335	159,612,217	169,667,888
Charles	211,618,749	99,513,353	11,094,837	0	912,531	757,375	76,000	323,972,845	337,189,897
Dorchester	30,078,941	12,258,240	1,222,975	634,992	301,535	398	249,509	44,746,590	49,963,792
Frederick	262,339,935	174,145,880	24,174,915	0	1,213,263	0	1,518,137	463,392,130	486,604,592
Garrett	48,466,651	10,600,000	1,500,000	1,300,000	2,100,000	690,000	461,000	65,117,651	90,128,572
Harford	284,936,004	190,046,278	10,607,920	11,646,254	0	544,792	0	497,781,248	496,925,918
Howard	540,722,652	392,660,792	18,978,128	26,900,788	4,587,835	2,710,269	609,002	987,169,466	944,572,848
Kent	30,212,616	13,969,595	999,378	559,650	123,089	7,868	99,874	45,972,070	47,632,768
Montgomery	1,517,637,972	1,365,884,524	100,493,338	95,010,000	16,857,688	3,118,400	268,430,212	3,367,432,134	3,005,430,717
Prince George's	951,140,700	492,049,300	34,670,500	72,036,700	4,850,700	12,380,600	92,357,300	1,659,485,800	1,561,161,400
Queen Anne's	64,847,473	40,326,921	4,430,158	1,461,174	398,930	155,336	1,150,000	112,769,992	116,557,259
St. Mary's	103,137,047	77,384,719	5,488,287	5,016,978	710,033	205,855	2,706,618	194,649,537	222,665,317
Somerset	14,946,799	6,011,266	457,646	0	55,848	20,666	0	21,492,225	32,661,016
Talbot	33,660,872	27,108,101	4,943,298	3,341,976	1,135,209	45,531	56,615	70,291,602	77,300,000
Washington	121,449,621	68,864,506	4,657,341	1,593,811	1,930,710	291,605	502,901	199,290,495	204,448,105
Wicomico	61,053,654	43,553,323	2,634,927	0	1,170,533	106,051	909,648	109,428,136	123,265,980
Worcester	117,311,192	13,673,793	5,142,527	3,165,273	14,127,884	466,635	1,422,436	155,309,740	171,207,479
Total	\$7,150,950,897	\$4,669,466,394	\$353,229,326	\$348,540,772	\$105,412,616	\$45,103,750	\$508,220,849	\$13,180,924,604	\$13,554,104,813

Note: Property tax revenues for Charles, Frederick, and Howard counties include special fire district tax. Property tax revenues for Montgomery County include special fire, mass transit, and recreation district taxes.

Source: Department of Legislative Services, County Budgets

Appendix 3 County Government Revenues – Fiscal 2015

<u>County</u>	<u>Property Tax</u>	<u>Income Tax</u>	<u>Recordation Tax</u>	<u>Transfer Tax</u>	<u>Hotel/Motel Tax</u>	<u>Admissions/ Amusement Tax</u>	<u>Other Local Taxes</u>	<u>Total Local Taxes</u>	<u>Total GF Revenues</u>
Allegany	\$41,239,460	\$23,675,889	\$1,100,000	\$375,000	\$1,024,345	\$220,000	\$592,000	\$68,226,694	\$82,142,773
Anne Arundel	661,259,500	437,600,000	39,000,000	39,000,000	12,944,000	8,980,000	18,860,000	1,217,643,500	1,349,416,700
Baltimore City	780,587,000	286,688,762	31,868,000	27,354,000	32,001,000	9,429,000	87,522,928	1,255,450,690	1,648,000,356
Baltimore	866,857,555	687,771,310	25,500,000	52,500,000	8,300,000	5,650,000	29,683,000	1,676,261,865	1,862,304,046
Calvert	139,549,219	75,016,690	6,120,000	0	800,000	30,000	1,420,000	222,935,909	242,922,582
Caroline	24,502,110	11,500,000	1,100,000	280,000	40,500	0	239,000	37,661,610	43,431,922
Carroll	192,258,630	135,918,119	11,800,000	30,000	359,641	300,000	1,992,319	342,658,709	368,494,140
Cecil	102,903,420	53,643,746	4,800,000	23,000	91,536	135,000	415,000	162,011,702	178,449,108
Charles	213,987,400	110,215,000	14,500,000	0	940,000	842,200	77,500	340,562,100	354,515,200
Dorchester	30,027,714	10,621,373	1,534,386	600,000	300,000	500	275,000	43,358,973	49,978,798
Frederick	267,861,882	182,535,800	23,958,789	0	1,331,506	0	1,494,600	477,182,577	525,693,378
Garrett	45,271,941	10,600,000	1,500,000	1,300,000	2,100,000	690,000	446,100	61,908,041	71,835,856
Harford	285,102,318	198,729,650	10,649,468	11,200,000	0	533,600	0	506,215,036	488,486,824
Howard	554,720,518	408,779,715	22,300,000	27,000,000	4,900,000	2,700,000	580,000	1,020,980,233	1,027,550,315
Kent	30,051,655	11,250,000	1,040,000	531,000	124,000	9,500	130,000	43,136,155	47,074,941
Montgomery	1,549,881,856	1,340,644,366	110,297,490	98,680,000	17,512,115	3,212,000	257,014,624	3,377,242,451	2,975,185,047
Prince George's	969,654,300	506,557,700	37,755,500	77,692,100	4,850,700	13,884,300	92,191,800	1,702,586,400	1,609,647,000
Queen Anne's	62,676,436	41,878,992	4,596,350	1,200,000	480,000	178,515	1,432,411	112,442,704	119,145,931
St. Mary's	103,319,238	85,200,000	5,400,000	5,350,000	850,000	100,000	2,440,000	202,659,238	220,466,510
Somerset	13,762,549	6,100,000	450,000	0	55,000	24,000	0	20,391,549	30,725,710
Talbot	34,177,500	26,600,000	5,060,000	2,750,000	1,250,000	45,000	63,000	69,945,500	74,625,000
Washington	117,938,190	72,230,000	5,500,000	1,400,000	2,000,000	310,000	470,000	199,848,190	204,539,010
Wicomico	62,651,923	39,561,266	2,757,621	0	1,100,292	85,000	874,510	107,030,612	128,733,808
Worcester	117,933,052	12,700,000	6,000,000	2,750,000	13,015,083	560,000	1,150,000	154,108,135	177,981,133
Total	\$7,268,175,366	\$4,776,018,378	\$374,587,604	\$350,015,100	\$106,369,718	\$47,918,615	\$499,363,792	\$13,422,448,573	\$13,881,346,088

Note: Property tax revenues for Charles and Howard counties include special fire district tax. Property tax revenues for Montgomery County include special fire, mass transit, and recreation district taxes.

Source: Department of Legislative Services, County Budgets

Appendix 4

Property Tax Revenue Trend for Fiscal 2013-2015

County	FY 2013	FY 2014	FY 2015	FY 2013-2014 \$ Difference	FY 2014-2015 \$ Difference	Average Annual Difference
Allegany	\$40,302,290	\$43,924,995	\$41,239,460	\$3,622,705	-\$2,685,535	1.2%
Anne Arundel	621,955,030	641,277,200	661,259,500	19,322,170	19,982,300	3.1%
Baltimore City	759,221,334	755,756,001	780,587,000	-3,465,333	24,830,999	1.4%
Baltimore	853,859,722	853,891,460	866,857,555	31,738	12,966,095	0.8%
Calvert	141,281,902	138,400,000	139,549,219	-2,881,902	1,149,219	-0.6%
Caroline	24,106,972	24,572,670	24,502,110	465,698	-70,560	0.8%
Carroll	198,426,541	196,094,923	192,258,630	-2,331,618	-3,836,293	-1.6%
Cecil	104,235,995	103,472,770	102,903,420	-763,225	-569,350	-0.6%
Charles	200,012,954	211,618,749	213,987,400	11,605,795	2,368,651	3.4%
Dorchester	31,930,405	30,078,941	30,027,714	-1,851,464	-51,227	-3.0%
Frederick	261,007,403	262,339,935	267,861,882	1,332,532	5,521,947	1.3%
Garrett	49,609,030	48,466,651	45,271,941	-1,142,379	-3,194,710	-4.5%
Harford	287,888,796	284,936,004	285,102,318	-2,952,792	166,314	-0.5%
Howard	525,266,975	540,722,652	554,720,518	15,455,677	13,997,866	2.8%
Kent	30,174,622	30,212,616	30,051,655	37,994	-160,961	-0.2%
Montgomery	1,486,018,769	1,517,637,972	1,549,881,856	31,619,203	32,243,884	2.1%
Prince George's	962,314,406	951,140,700	969,654,300	-11,173,706	18,513,600	0.4%
Queen Anne's	64,057,050	64,847,473	62,676,436	790,423	-2,171,037	-1.1%
St. Mary's	100,809,676	103,137,047	103,319,238	2,327,371	182,191	1.2%
Somerset	14,822,293	14,946,799	13,762,549	124,506	-1,184,250	-3.6%
Talbot	32,741,855	33,660,872	34,177,500	919,017	516,628	2.2%
Washington	122,470,175	121,449,621	117,938,190	-1,020,554	-3,511,431	-1.9%
Wicomico	60,969,775	61,053,654	62,651,923	83,879	1,598,269	1.4%
Worcester	121,570,804	117,311,192	117,933,052	-4,259,612	621,860	-1.5%
Total	\$7,095,054,774	\$7,150,950,897	\$7,268,175,366	\$55,896,123	\$117,224,469	1.2%

Note: Property tax revenues for Charles, Frederick, and Howard counties include special fire district tax. Property tax revenues for Montgomery County include special fire, mass transit, and recreation district taxes.

Source: Department of Legislative Services, County Budgets

Appendix 5

Local Income Tax Revenue Trend for Fiscal 2013-2015

County	FY 2013	FY 2014	FY 2015	FY 2013-2014 \$ Difference	FY 2014-2015 \$ Difference	Average Annual Difference
Allegany	\$24,249,252	\$24,112,733	\$23,675,889	-\$136,519	-\$436,844	-1.2%
Anne Arundel	407,582,398	419,400,000	437,600,000	11,817,602	18,200,000	3.6%
Baltimore City	276,111,244	274,844,674	286,688,762	-1,266,570	11,844,088	1.9%
Baltimore	624,060,806	663,137,560	687,771,310	39,076,754	24,633,750	5.0%
Calvert	64,127,088	66,126,000	75,016,690	1,998,912	8,890,690	8.2%
Caroline	11,103,026	11,461,356	11,500,000	358,330	38,644	1.8%
Carroll	127,555,768	131,533,099	135,918,119	3,977,331	4,385,020	3.2%
Cecil	50,421,108	50,800,381	53,643,746	379,273	2,843,365	3.1%
Charles	99,440,598	99,513,353	110,215,000	72,755	10,701,647	5.3%
Dorchester	9,692,631	12,258,240	10,621,373	2,565,609	-1,636,867	4.7%
Frederick	176,068,392	174,145,880	182,535,800	-1,922,512	8,389,920	1.8%
Garrett	11,206,954	10,600,000	10,600,000	-606,954	0	-2.7%
Harford	183,317,187	190,046,278	198,729,650	6,729,091	8,683,372	4.1%
Howard	374,358,092	392,660,792	408,779,715	18,302,700	16,118,923	4.5%
Kent	11,047,174	13,969,595	11,250,000	2,922,421	-2,719,595	0.9%
Montgomery	1,317,533,090	1,365,884,524	1,340,644,366	48,351,434	-25,240,158	0.9%
Prince George's	505,266,237	492,049,300	506,557,700	-13,216,937	14,508,400	0.1%
Queen Anne's	39,438,906	40,326,921	41,878,992	888,015	1,552,071	3.0%
St. Mary's	76,746,270	77,384,719	85,200,000	638,449	7,815,281	5.4%
Somerset	6,123,153	6,011,266	6,100,000	-111,887	88,734	-0.2%
Talbot	23,140,754	27,108,101	26,600,000	3,967,347	-508,101	7.2%
Washington	65,763,209	68,864,506	72,230,000	3,101,297	3,365,494	4.8%
Wicomico	41,027,904	43,553,323	39,561,266	2,525,419	-3,992,057	-1.8%
Worcester	12,676,852	13,673,793	12,700,000	996,941	-973,793	0.1%
Total	\$4,538,058,093	\$4,669,466,394	\$4,776,018,378	\$131,408,301	\$106,551,984	2.6%

Source: Department of Legislative Services, County Budgets

Appendix 6

Recordation Tax Revenue Trend for Fiscal 2013-2015

County	FY 2013	FY 2014	FY 2015	FY 2013-2014 \$ Difference	FY 2014-2015 \$ Difference	Average Annual Difference
Allegany	\$1,692,145	\$1,643,304	\$1,100,000	-\$48,841	-\$543,304	-19.4%
Anne Arundel	42,040,038	38,000,000	39,000,000	-4,040,038	1,000,000	-3.7%
Baltimore City	32,329,642	35,000,000	31,868,000	2,670,358	-3,132,000	-0.7%
Baltimore	30,578,527	24,620,000	25,500,000	-5,958,527	880,000	-8.7%
Calvert	5,909,376	6,171,000	6,120,000	261,624	-51,000	1.8%
Caroline	1,301,909	1,104,166	1,100,000	-197,743	-4,166	-8.1%
Carroll	9,955,395	10,576,850	11,800,000	621,455	1,223,150	8.9%
Cecil	5,535,807	4,617,831	4,800,000	-917,976	182,169	-6.9%
Charles	11,104,089	11,094,837	14,500,000	-9,252	3,405,163	14.3%
Dorchester	1,434,291	1,222,975	1,534,386	-211,316	311,411	3.4%
Frederick	24,339,679	24,174,915	23,958,789	-164,764	-216,126	-0.8%
Garrett	2,386,470	1,500,000	1,500,000	-886,470	0	-20.7%
Harford	10,699,395	10,607,920	10,649,468	-91,475	41,548	-0.2%
Howard	21,837,593	18,978,128	22,300,000	-2,859,465	3,321,872	1.1%
Kent	962,237	999,378	1,040,000	37,141	40,622	4.0%
Montgomery	104,597,908	100,493,338	110,297,490	-4,104,570	9,804,152	2.7%
Prince George's	30,641,413	34,670,500	37,755,500	4,029,087	3,085,000	11.0%
Queen Anne's	4,614,108	4,430,158	4,596,350	-183,950	166,192	-0.2%
St. Mary's	5,688,996	5,488,287	5,400,000	-200,709	-88,287	-2.6%
Somerset	441,941	457,646	450,000	15,705	-7,646	0.9%
Talbot	5,493,728	4,943,298	5,060,000	-550,430	116,702	-4.0%
Washington	5,213,999	4,657,341	5,500,000	-556,658	842,659	2.7%
Wicomico	2,502,251	2,634,927	2,757,621	132,676	122,694	5.0%
Worcester	6,648,659	5,142,527	6,000,000	-1,506,132	857,473	-5.0%
Total	\$367,949,596	\$353,229,326	\$374,587,604	-\$14,720,270	\$21,358,278	0.9%

Source: Department of Legislative Services, County Budgets

Appendix 7

Transfer Tax Revenue Trend for Fiscal 2013-2015

County	FY 2013	FY 2014	FY 2015	FY 2013-2014 \$ Difference	FY 2014-2015 \$ Difference	Average Annual Difference
Allegany	\$300,696	\$478,515	\$375,000	\$177,819	-\$103,515	11.7%
Anne Arundel	38,996,647	38,000,000	39,000,000	-996,647	1,000,000	0.0%
Baltimore City	27,506,213	35,000,000	27,354,000	7,493,787	-7,646,000	-0.3%
Baltimore	52,962,566	52,000,000	52,500,000	-962,566	500,000	-0.4%
Calvert	0	0	0	0	0	N/A
Caroline	377,400	344,652	280,000	-32,748	-64,652	-13.9%
Carroll	63,462	25,000	30,000	-38,462	5,000	-31.2%
Cecil	23,946	25,009	23,000	1,063	-2,009	-2.0%
Charles	0	0	0	0	0	N/A
Dorchester	619,002	634,992	600,000	15,990	-34,992	-1.5%
Frederick	0	0	0	0	0	N/A
Garrett	1,424,217	1,300,000	1,300,000	-124,217	0	-4.5%
Harford	10,854,827	11,646,254	11,200,000	791,427	-446,254	1.6%
Howard	25,253,440	26,900,788	27,000,000	1,647,348	99,212	3.4%
Kent	451,355	559,650	531,000	108,295	-28,650	8.5%
Montgomery	85,409,703	95,010,000	98,680,000	9,600,297	3,670,000	7.5%
Prince George's	69,475,489	72,036,700	77,692,100	2,561,211	5,655,400	5.7%
Queen Anne's	1,351,064	1,461,174	1,200,000	110,110	-261,174	-5.8%
St. Mary's	4,268,826	5,016,978	5,350,000	748,152	333,022	11.9%
Somerset	0	0	0	0	0	N/A
Talbot	3,024,512	3,341,976	2,750,000	317,464	-591,976	-4.6%
Washington	1,484,247	1,593,811	1,400,000	109,564	-193,811	-2.9%
Wicomico	0	0	0	0	0	N/A
Worcester	2,912,622	3,165,273	2,750,000	252,651	-415,273	-2.8%
Total	\$326,760,234	\$348,540,772	\$350,015,100	\$21,780,538	\$1,474,328	3.5%

Source: Department of Legislative Services, County Budgets

Appendix 8

Hotel/Motel Tax Revenue Trend for Fiscal 2013-2015

County	FY 2013	FY 2014	FY 2015	FY 2013-2014 \$ Difference	FY 2014-2015 \$ Difference	Average Annual Difference
Allegany	\$787,579	\$909,959	\$1,024,345	\$122,380	\$114,386	14.0%
Anne Arundel	13,653,147	12,690,000	12,944,000	-963,147	254,000	-2.6%
Baltimore City	30,288,038	32,200,000	32,001,000	1,911,962	-199,000	2.8%
Baltimore	8,755,231	8,150,000	8,300,000	-605,231	150,000	-2.6%
Calvert	634,973	560,000	800,000	-74,973	240,000	12.2%
Caroline	40,415	40,500	40,500	85	0	0.1%
Carroll	278,906	290,720	359,641	11,814	68,921	13.6%
Cecil	88,585	95,649	91,536	7,064	-4,113	1.7%
Charles	987,960	912,531	940,000	-75,429	27,469	-2.5%
Dorchester	291,432	301,535	300,000	10,103	-1,535	1.5%
Frederick	1,221,602	1,213,263	1,331,506	-8,339	118,243	4.4%
Garrett	2,006,797	2,100,000	2,100,000	93,203	0	2.3%
Harford	0	0	0	0	0	N/A
Howard	4,404,564	4,587,835	4,900,000	183,271	312,165	5.5%
Kent	122,535	123,089	124,000	554	911	0.6%
Montgomery	18,910,872	16,857,688	17,512,115	-2,053,184	654,427	-3.8%
Prince George's	4,960,813	4,850,700	4,850,700	-110,113	0	-1.1%
Queen Anne's	470,139	398,930	480,000	-71,209	81,070	1.0%
St. Mary's	872,533	710,033	850,000	-162,500	139,967	-1.3%
Somerset	58,106	55,848	55,000	-2,258	-848	-2.7%
Talbot	1,096,821	1,135,209	1,250,000	38,388	114,791	6.8%
Washington	1,876,044	1,930,710	2,000,000	54,666	69,290	3.3%
Wicomico	1,089,928	1,170,533	1,100,292	80,605	-70,241	0.5%
Worcester	13,632,597	14,127,884	13,015,083	495,287	-1,112,801	-2.3%
Total	\$106,529,617	\$105,412,616	\$106,369,718	-\$1,117,001	\$957,102	-0.1%

Source: Department of Legislative Services, County Budgets

Appendix 9

Admissions and Amusement Tax Revenue Trend for Fiscal 2013-2015

County	FY 2013	FY 2014	FY 2015	FY 2013-2014 \$ Difference	FY 2014-2015 \$ Difference	Average Annual Difference
Allegany	\$250,167	\$164,229	\$220,000	-\$85,938	\$55,771	-6.2%
Anne Arundel	8,407,658	8,800,000	8,980,000	392,342	180,000	3.3%
Baltimore City	9,161,053	8,653,000	9,429,000	-508,053	776,000	1.5%
Baltimore	5,302,949	5,582,000	5,650,000	279,051	68,000	3.2%
Calvert	29,720	15,800	30,000	-13,920	14,200	0.5%
Caroline	0	0	0	0	0	N/A
Carroll	296,932	262,098	300,000	-34,834	37,902	0.5%
Cecil	130,424	125,242	135,000	-5,182	9,758	1.7%
Charles	796,989	757,375	842,200	-39,614	84,825	2.8%
Dorchester	445	398	500	-47	102	6.0%
Frederick	525,352	0	0	-525,352	0	-100.0%
Garrett	686,667	690,000	690,000	3,333	0	0.2%
Harford	533,606	544,792	533,600	11,186	-11,192	0.0%
Howard	2,136,733	2,710,269	2,700,000	573,536	-10,269	12.4%
Kent	10,404	7,868	9,500	-2,536	1,632	-4.4%
Montgomery	3,178,502	3,118,400	3,212,000	-60,102	93,600	0.5%
Prince George's	13,415,947	12,380,600	13,884,300	-1,035,347	1,503,700	1.7%
Queen Anne's	160,516	155,336	178,515	-5,180	23,179	5.5%
St. Mary's	84,269	205,855	100,000	121,586	-105,855	8.9%
Somerset	16,292	20,666	24,000	4,374	3,334	21.4%
Talbot	47,184	45,531	45,000	-1,653	-531	-2.3%
Washington	308,149	291,605	310,000	-16,544	18,395	0.3%
Wicomico	157,103	106,051	85,000	-51,052	-21,051	-26.4%
Worcester	481,879	466,635	560,000	-15,244	93,365	7.8%
Total	\$46,118,940	\$45,103,750	\$47,918,615	-\$1,015,190	\$2,814,865	1.9%

Source: Department of Legislative Services, County Budgets

Appendix 10 Total Local Taxes for Fiscal 2013-2015

County	FY 2013	FY 2014	FY 2015	FY 2013-2014 \$ Difference	FY 2014-2015 \$ Difference	Average Annual Difference
Allegany	\$68,148,748	\$71,728,394	\$68,226,694	\$3,579,646	-\$3,501,700	0.1%
Anne Arundel	1,151,671,717	1,177,007,200	1,217,643,500	25,335,483	40,636,300	2.8%
Baltimore City	1,222,782,640	1,226,206,200	1,255,450,690	3,423,560	29,244,490	1.3%
Baltimore	1,605,959,459	1,636,792,020	1,676,261,865	30,832,561	39,469,845	2.2%
Calvert	213,495,802	212,599,800	222,935,909	-896,002	10,336,109	2.2%
Caroline	37,158,825	37,749,046	37,661,610	590,221	-87,436	0.7%
Carroll	338,923,810	340,928,066	342,658,709	2,004,256	1,730,643	0.5%
Cecil	160,871,028	159,612,217	162,011,702	-1,258,811	2,399,485	0.4%
Charles	312,418,049	323,972,845	340,562,100	11,554,796	16,589,255	4.4%
Dorchester	44,246,331	44,746,590	43,358,973	500,259	-1,387,617	-1.0%
Frederick	464,648,850	463,392,130	477,182,577	-1,256,720	13,790,447	1.3%
Garrett	67,844,098	65,117,651	61,908,041	-2,726,447	-3,209,610	-4.5%
Harford	493,293,811	497,781,248	506,215,036	4,487,437	8,433,788	1.3%
Howard	953,855,905	987,169,466	1,020,980,233	33,313,561	33,810,767	3.5%
Kent	42,898,268	45,972,070	43,136,155	3,073,802	-2,835,915	0.3%
Montgomery	3,285,294,085	3,367,432,134	3,377,242,451	82,138,049	9,810,317	1.4%
Prince George's	1,685,604,249	1,659,485,800	1,702,586,400	-26,118,449	43,100,600	0.5%
Queen Anne's	111,551,392	112,769,992	112,442,704	1,218,600	-327,288	0.4%
St. Mary's	190,914,398	194,649,537	202,659,238	3,735,139	8,009,701	3.0%
Somerset	21,461,785	21,492,225	20,391,549	30,440	-1,100,676	-2.5%
Talbot	65,609,653	70,291,602	69,945,500	4,681,949	-346,102	3.3%
Washington	197,577,576	199,290,495	199,848,190	1,712,919	557,695	0.6%
Wicomico	106,647,907	109,428,136	107,030,612	2,780,229	-2,397,524	0.2%
Worcester	159,294,997	155,309,740	154,108,135	-3,985,257	-1,201,605	-1.6%
Total	\$13,002,173,383	\$13,180,924,604	\$13,422,448,573	\$178,751,221	\$241,523,969	1.6%

Source: Department of Legislative Services, County Budgets

Appendix 11

Total General Fund Revenues for Fiscal 2013-2015

County	FY 2013	FY 2014	FY 2015	FY 2013-2014 \$ Difference	FY 2014-2015 \$ Difference	Average Annual Difference
Allegany	\$83,062,894	\$82,667,432	\$82,142,773	-\$395,462	-\$524,659	-0.6%
Anne Arundel	1,241,491,489	1,317,882,300	1,349,416,700	76,390,811	31,534,400	4.3%
Baltimore City	1,616,563,853	1,642,569,873	1,648,000,356	26,006,020	5,430,483	1.0%
Baltimore	1,639,365,067	1,736,491,528	1,862,304,046	97,126,461	125,812,518	6.6%
Calvert	225,888,960	224,217,018	242,922,582	-1,671,942	18,705,564	3.7%
Caroline	43,151,824	43,311,140	43,431,922	159,316	120,782	0.3%
Carroll	374,491,438	369,581,974	368,494,140	-4,909,464	-1,087,834	-0.8%
Cecil	171,303,776	169,667,888	178,449,108	-1,635,888	8,781,220	2.1%
Charles	339,185,434	337,189,897	354,515,200	-1,995,537	17,325,303	2.2%
Dorchester	49,868,833	49,963,792	49,978,798	94,959	15,006	0.1%
Frederick	450,900,530	486,604,592	525,693,378	35,704,062	39,088,786	8.0%
Garrett	77,669,241	90,128,572	71,835,856	12,459,331	-18,292,716	-3.8%
Harford	551,489,856	496,925,918	488,486,824	-54,563,938	-8,439,094	-5.9%
Howard	913,609,816	944,572,848	1,027,550,315	30,963,032	82,977,467	6.1%
Kent	45,244,989	47,632,768	47,074,941	2,387,779	-557,827	2.0%
Montgomery	2,892,526,313	3,005,430,717	2,975,185,047	112,904,404	-30,245,670	1.4%
Prince George's	1,611,164,341	1,561,161,400	1,609,647,000	-50,002,941	48,485,600	0.0%
Queen Anne's	117,101,830	116,557,259	119,145,931	-544,571	2,588,672	0.9%
St. Mary's	211,219,671	222,665,317	220,466,510	11,445,646	-2,198,807	2.2%
Somerset	31,081,548	32,661,016	30,725,710	1,579,468	-1,935,306	-0.6%
Talbot	71,090,060	77,300,000	74,625,000	6,209,940	-2,675,000	2.5%
Washington	216,327,781	204,448,105	204,539,010	-11,879,676	90,905	-2.8%
Wicomico	117,327,313	123,265,980	128,733,808	5,938,667	5,467,828	4.7%
Worcester	173,128,742	171,207,479	177,981,133	-1,921,263	6,773,654	1.4%
Total	\$13,264,255,599	\$13,554,104,813	\$13,881,346,088	\$289,849,214	\$327,241,275	2.3%

Source: Department of Legislative Services, County Budgets

Appendix 12

County Assessable Base – Real Property Tax Base

(\$ in Thousands)

County	FY 2008	FY 2009	FY 2010	FY 2011	FY 2012	FY 2013	FY 2014	FY 2015	FY 2016 E	FY 2017 E
Allegany	\$2,846,492	\$3,065,071	\$3,484,452	\$3,672,486	\$3,671,981	\$3,624,666	\$3,579,448	\$3,547,929	\$3,520,386	\$3,510,808
Anne Arundel	69,284,375	79,234,802	84,100,226	82,254,827	76,998,283	73,705,939	73,865,355	75,319,059	77,704,858	80,100,359
Baltimore City	27,026,288	31,476,196	36,152,390	37,123,845	35,496,276	33,133,118	32,548,629	33,877,108	33,556,872	33,558,979
Baltimore	69,109,693	78,638,141	85,888,670	86,294,582	81,261,214	77,724,847	75,469,078	75,084,608	76,336,023	77,979,451
Calvert	10,627,594	12,450,810	13,459,525	13,316,625	12,425,111	11,678,345	11,334,235	11,274,400	11,334,409	11,365,229
Caroline	2,370,861	2,765,323	3,095,753	3,079,802	2,846,998	2,705,356	2,550,357	2,499,663	2,459,461	2,422,172
Carroll	17,379,874	19,772,165	21,539,976	20,353,779	19,143,906	18,269,133	17,999,418	17,967,373	18,155,585	18,726,641
Cecil	8,813,334	10,080,287	10,800,442	10,767,002	10,177,098	9,586,913	9,280,440	9,252,797	9,347,058	9,387,120
Charles	15,121,431	17,610,478	18,938,637	17,941,362	16,687,708	15,809,223	15,414,254	15,465,732	15,573,757	16,073,770
Dorchester	2,695,155	3,102,840	3,391,676	3,416,216	3,108,058	3,001,778	2,861,600	2,782,627	2,761,900	2,751,750
Frederick	26,254,477	29,825,708	31,678,985	29,464,122	26,861,626	25,596,214	25,433,656	25,856,626	26,474,118	26,653,316
Garrett	3,764,637	4,232,240	4,573,168	4,858,041	4,846,248	4,636,840	4,621,273	4,260,262	4,233,363	4,249,668
Harford	21,990,003	25,200,084	27,465,303	27,595,623	26,409,869	25,821,377	25,569,637	25,695,399	25,752,305	25,852,328
Howard	40,562,971	46,143,463	48,528,784	46,468,365	43,424,892	42,459,610	42,755,118	43,875,445	45,112,405	45,946,095
Kent	2,499,547	2,880,110	3,180,936	3,246,033	3,119,848	3,021,073	2,976,520	2,909,297	2,904,669	2,938,635
Montgomery	164,467,981	182,975,851	183,562,521	175,163,507	163,840,448	159,469,990	161,008,847	165,097,133	171,838,699	178,841,920
Prince George's	71,568,514	85,687,003	95,828,317	95,961,368	83,077,561	76,308,869	73,074,771	73,896,653	74,790,489	75,536,144
Queen Anne's	7,299,651	8,358,833	8,987,459	8,688,003	8,486,036	7,967,775	7,636,884	7,582,753	7,561,471	7,573,999
St. Mary's	9,530,468	11,328,477	12,601,733	12,920,612	12,307,028	11,937,100	11,806,248	11,801,792	11,817,322	11,829,000
Somerset	1,333,556	1,564,620	1,685,922	1,698,004	1,615,002	1,410,142	1,417,905	1,357,895	1,367,004	1,382,749
Talbot	7,875,276	9,099,478	10,085,641	10,079,566	9,672,774	9,261,945	8,789,477	8,470,761	8,302,473	8,302,474
Washington	11,348,229	13,202,049	14,297,018	13,646,825	12,725,241	12,297,143	11,906,479	11,794,130	11,820,947	11,931,419
Wicomico	5,873,614	6,698,775	7,258,815	7,184,163	6,629,389	6,171,303	5,832,822	5,690,278	5,728,729	5,881,800
Worcester	17,038,234	20,092,743	18,968,635	17,864,742	17,221,019	15,454,392	14,526,197	14,527,882	14,457,545	14,734,952
Statewide	\$616,682,254	\$705,485,547	\$749,554,984	\$733,059,499	\$682,053,614	\$651,053,089	\$642,258,648	\$649,887,601	\$662,911,848	\$677,530,778

Source: State Department of Assessments and Taxation

Appendix 13
County Assessable Base – Real Property Tax Base
(Annual Percent Change)

County	FY 2008	FY 2009	FY 2010	FY 2011	FY 2012	FY 2013	FY 2014	FY 2015	FY 2016 E	FY 2017 E
Allegany	10.0%	7.7%	13.7%	5.4%	0.0%	-1.3%	-1.2%	-0.9%	-0.8%	-0.3%
Anne Arundel	18.9%	14.4%	6.1%	-2.2%	-6.4%	-4.3%	0.2%	2.0%	3.2%	3.1%
Baltimore City	16.1%	16.5%	14.9%	2.7%	-4.4%	-6.7%	-1.8%	4.1%	-0.9%	0.0%
Baltimore	16.4%	13.8%	9.2%	0.5%	-5.8%	-4.4%	-2.9%	-0.5%	1.7%	2.2%
Calvert	23.2%	17.2%	8.1%	-1.1%	-6.7%	-6.0%	-2.9%	-0.5%	0.5%	0.3%
Caroline	18.6%	16.6%	11.9%	-0.5%	-7.6%	-5.0%	-5.7%	-2.0%	-1.6%	-1.5%
Carroll	16.4%	13.8%	8.9%	-5.5%	-5.9%	-4.6%	-1.5%	-0.2%	1.0%	3.1%
Cecil	16.9%	14.4%	7.1%	-0.3%	-5.5%	-5.8%	-3.2%	-0.3%	1.0%	0.4%
Charles	21.8%	16.5%	7.5%	-5.3%	-7.0%	-5.3%	-2.5%	0.3%	0.7%	3.2%
Dorchester	18.9%	15.1%	9.3%	0.7%	-9.0%	-3.4%	-4.7%	-2.8%	-0.7%	-0.4%
Frederick	19.6%	13.6%	6.2%	-7.0%	-8.8%	-4.7%	-0.6%	1.7%	2.4%	0.7%
Garrett	15.1%	12.4%	8.1%	6.2%	-0.2%	-4.3%	-0.3%	-7.8%	-0.6%	0.4%
Harford	15.8%	14.6%	9.0%	0.5%	-4.3%	-2.2%	-1.0%	0.5%	0.2%	0.4%
Howard	16.5%	13.8%	5.2%	-4.2%	-6.5%	-2.2%	0.7%	2.6%	2.8%	1.8%
Kent	16.6%	15.2%	10.4%	2.0%	-3.9%	-3.2%	-1.5%	-2.3%	-0.2%	1.2%
Montgomery	15.9%	11.3%	0.3%	-4.6%	-6.5%	-2.7%	1.0%	2.5%	4.1%	4.1%
Prince George's	19.5%	19.7%	11.8%	0.1%	-13.4%	-8.1%	-4.2%	1.1%	1.2%	1.0%
Queen Anne's	19.4%	14.5%	7.5%	-3.3%	-2.3%	-6.1%	-4.2%	-0.7%	-0.3%	0.2%
St. Mary's	19.6%	18.9%	11.2%	2.5%	-4.7%	-3.0%	-1.1%	0.0%	0.1%	0.1%
Somerset	19.5%	17.3%	7.8%	0.7%	-4.9%	-12.7%	0.6%	-4.2%	0.7%	1.2%
Talbot	17.6%	15.5%	10.8%	-0.1%	-4.0%	-4.2%	-5.1%	-3.6%	-2.0%	0.0%
Washington	18.6%	16.3%	8.3%	-4.5%	-6.8%	-3.4%	-3.2%	-0.9%	0.2%	0.9%
Wicomico	14.2%	14.0%	8.4%	-1.0%	-7.7%	-6.9%	-5.5%	-2.4%	0.7%	2.7%
Worcester	20.1%	17.9%	-5.6%	-5.8%	-3.6%	-10.3%	-6.0%	0.0%	-0.5%	1.9%
Statewide	17.4%	14.4%	6.2%	-2.2%	-7.0%	-4.5%	-1.4%	1.2%	2.0%	2.2%

Source: State Department of Assessments and Taxation

Appendix 14

Assessable Base Loss Due to Homestead Tax Credit (\$ in Thousands)

County	FY 2008	FY 2009	FY 2010	FY 2011	FY 2012	FY 2013	FY 2014	FY 2015	FY 2016 E	FY 2017 E
Allegany	\$47,204	\$101,116	\$171,351	\$152,059	\$69,466	\$33,294	\$16,430	\$7,321	\$5,101	\$3,554
Anne Arundel	17,771,980	23,300,341	24,338,805	20,411,826	15,424,859	12,094,879	10,418,753	8,564,128	8,680,659	8,798,776
Baltimore City	3,220,510	5,220,572	6,573,441	6,268,735	5,249,768	4,175,270	2,954,215	1,970,097	1,795,390	1,636,176
Baltimore	10,839,535	15,630,533	18,189,751	15,397,942	9,962,810	5,855,758	3,154,084	1,607,788	1,214,894	918,011
Calvert	1,037,336	1,516,813	1,468,778	680,760	124,333	18,879	5,364	1,607	825	424
Caroline	205,125	368,555	487,848	366,264	185,544	94,546	37,553	18,054	12,045	8,036
Carroll	2,230,615	3,268,030	3,642,355	1,808,116	598,963	174,961	62,040	21,240	18,106	15,434
Cecil	566,520	888,369	870,739	477,078	122,164	17,682	5,015	2,270	1,569	1,084
Charles	1,592,057	2,580,827	2,427,703	1,185,534	331,320	47,078	22,567	7,217	5,755	4,589
Dorchester	237,320	385,938	474,081	383,081	307,733	120,048	54,907	28,667	18,906	12,469
Frederick	3,867,882	5,378,543	5,420,640	2,874,169	909,398	208,166	84,530	43,155	49,465	56,698
Garrett	100,114	162,678	205,961	223,520	171,202	118,613	86,732	35,692	25,707	18,515
Harford	1,401,691	2,073,317	2,032,101	1,393,042	306,981	49,903	17,601	9,256	7,463	6,017
Howard	8,070,139	10,463,621	10,586,057	6,937,135	3,537,224	1,932,094	1,125,312	626,948	480,189	367,784
Kent	255,124	362,585	430,316	398,989	272,180	194,766	142,073	78,858	62,927	50,214
Montgomery	22,169,248	24,312,071	14,886,799	5,110,593	706,249	233,952	117,012	115,441	82,822	59,420
Prince George's	13,862,381	19,673,315	24,051,231	21,071,375	10,984,535	5,370,280	2,836,494	2,036,126	2,444,409	2,934,561
Queen Anne's	970,047	1,390,678	1,467,674	1,014,884	861,693	402,155	206,396	102,982	56,201	30,671
St. Mary's	1,168,948	1,918,741	2,278,846	1,909,118	1,126,764	712,187	402,004	195,110	129,685	86,199
Somerset	69,420	104,632	105,834	70,507	27,509	9,490	3,786	1,142	890	694
Talbot	1,964,215	2,507,182	2,901,232	2,685,366	2,371,757	2,056,169	1,725,579	1,418,924	1,314,020	1,216,872
Washington	958,176	1,763,131	2,067,428	1,129,486	474,704	172,210	45,177	19,132	13,173	9,070
Wicomico	219,514	377,275	408,656	249,776	53,465	12,618	4,726	2,632	4,870	9,011
Worcester	1,059,763	1,478,455	1,550,864	1,028,185	720,325	520,680	298,119	173,552	151,827	132,822
Statewide	\$93,884,862	\$125,227,318	\$127,038,491	\$93,227,540	\$54,900,946	\$34,625,678	\$23,826,469	\$17,087,339	\$16,576,898	\$16,377,100

Source: State Department of Assessments and Taxation

Appendix 15
Assessable Base Loss Due to Homestead Tax Credit
Percent of Real Property Tax Base

County	FY 2008	FY 2009	FY 2010	FY 2011	FY 2012	FY 2013	FY 2014	FY 2015	FY 2016 E	FY 2017 E
Allegany	1.7%	3.3%	4.9%	4.1%	1.9%	0.9%	0.5%	0.2%	0.1%	0.1%
Anne Arundel	25.7%	29.4%	28.9%	24.8%	20.0%	16.4%	14.1%	11.4%	11.2%	11.0%
Baltimore City	11.9%	16.6%	18.2%	16.9%	14.8%	12.6%	9.1%	5.8%	5.4%	4.9%
Baltimore	15.7%	19.9%	21.2%	17.8%	12.3%	7.5%	4.2%	2.1%	1.6%	1.2%
Calvert	9.8%	12.2%	10.9%	5.1%	1.0%	0.2%	0.0%	0.0%	0.0%	0.0%
Caroline	8.7%	13.3%	15.8%	11.9%	6.5%	3.5%	1.5%	0.7%	0.5%	0.3%
Carroll	12.8%	16.5%	16.9%	8.9%	3.1%	1.0%	0.3%	0.1%	0.1%	0.1%
Cecil	6.4%	8.8%	8.1%	4.4%	1.2%	0.2%	0.1%	0.0%	0.0%	0.0%
Charles	10.5%	14.7%	12.8%	6.6%	2.0%	0.3%	0.1%	0.0%	0.0%	0.0%
Dorchester	8.8%	12.4%	14.0%	11.2%	9.9%	4.0%	1.9%	1.0%	0.7%	0.5%
Frederick	14.7%	18.0%	17.1%	9.8%	3.4%	0.8%	0.3%	0.2%	0.2%	0.2%
Garrett	2.7%	3.8%	4.5%	4.6%	3.5%	2.6%	1.9%	0.8%	0.6%	0.4%
Harford	6.4%	8.2%	7.4%	5.0%	1.2%	0.2%	0.1%	0.0%	0.0%	0.0%
Howard	19.9%	22.7%	21.8%	14.9%	8.1%	4.6%	2.6%	1.4%	1.1%	0.8%
Kent	10.2%	12.6%	13.5%	12.3%	8.7%	6.4%	4.8%	2.7%	2.2%	1.7%
Montgomery	13.5%	13.3%	8.1%	2.9%	0.4%	0.1%	0.1%	0.1%	0.0%	0.0%
Prince George's	19.4%	23.0%	25.1%	22.0%	13.2%	7.0%	3.9%	2.8%	3.3%	3.9%
Queen Anne's	13.3%	16.6%	16.3%	11.7%	10.2%	5.0%	2.7%	1.4%	0.7%	0.4%
St. Mary's	12.3%	16.9%	18.1%	14.8%	9.2%	6.0%	3.4%	1.7%	1.1%	0.7%
Somerset	5.2%	6.7%	6.3%	4.2%	1.7%	0.7%	0.3%	0.1%	0.1%	0.1%
Talbot	24.9%	27.6%	28.8%	26.6%	24.5%	22.2%	19.6%	16.8%	15.8%	14.7%
Washington	8.4%	13.4%	14.5%	8.3%	3.7%	1.4%	0.4%	0.2%	0.1%	0.1%
Wicomico	3.7%	5.6%	5.6%	3.5%	0.8%	0.2%	0.1%	0.0%	0.1%	0.2%
Worcester	6.2%	7.4%	8.2%	5.8%	4.2%	3.4%	2.1%	1.2%	1.1%	0.9%
Statewide	15.2%	17.8%	16.9%	12.7%	8.0%	5.3%	3.7%	2.6%	2.5%	2.4%

Source: State Department of Assessments and Taxation

Appendix 16
County Assessable Base – Real Property
Adjusted for Homestead Tax Credit
(\$ in Thousands)

County	FY 2008	FY 2009	FY 2010	FY 2011	FY 2012	FY 2013	FY 2014	FY 2015	FY 2016 E	FY 2017 E
Allegany	\$2,799,287	\$2,963,955	\$3,313,101	\$3,520,427	\$3,602,515	\$3,591,372	\$3,563,018	\$3,540,608	\$3,515,285	\$3,507,254
Anne Arundel	51,512,395	55,934,461	59,761,421	61,843,001	61,573,424	61,611,060	63,446,602	66,754,931	69,024,199	71,301,583
Baltimore City	23,805,779	26,255,624	29,578,949	30,855,110	30,246,508	28,957,848	29,594,414	31,907,011	31,761,482	31,922,803
Baltimore	58,270,158	63,007,608	67,698,919	70,896,640	71,298,404	71,869,089	72,314,994	73,476,820	75,121,129	77,061,440
Calvert	9,590,258	10,933,997	11,990,747	12,635,865	12,300,778	11,659,466	11,328,871	11,272,793	11,333,584	11,364,805
Caroline	2,165,736	2,396,768	2,607,905	2,713,538	2,661,454	2,610,810	2,512,804	2,481,609	2,447,416	2,414,136
Carroll	15,149,259	16,504,135	17,897,621	18,545,663	18,544,943	18,094,172	17,937,378	17,946,133	18,137,479	18,711,207
Cecil	8,246,814	9,191,918	9,929,703	10,289,924	10,054,934	9,569,231	9,275,425	9,250,527	9,345,489	9,386,036
Charles	13,529,375	15,029,651	16,510,934	16,755,828	16,356,388	15,762,145	15,391,687	15,458,515	15,568,002	16,069,181
Dorchester	2,457,835	2,716,902	2,917,595	3,033,135	2,800,325	2,881,730	2,806,693	2,753,960	2,742,994	2,739,281
Frederick	22,386,595	24,447,165	26,258,345	26,589,953	25,952,228	25,388,048	25,349,126	25,813,471	26,424,653	26,596,618
Garrett	3,664,523	4,069,562	4,367,207	4,634,521	4,675,046	4,518,227	4,534,541	4,224,570	4,207,656	4,231,153
Harford	20,588,312	23,126,767	25,433,202	26,202,581	26,102,888	25,771,474	25,552,036	25,686,143	25,744,842	25,846,311
Howard	32,492,831	35,679,842	37,942,727	39,531,230	39,887,668	40,527,516	41,629,806	43,248,497	44,632,216	45,578,311
Kent	2,244,423	2,517,525	2,750,620	2,847,044	2,847,668	2,826,307	2,834,447	2,830,439	2,841,742	2,888,421
Montgomery	142,298,733	158,663,780	168,675,722	170,052,914	163,134,199	159,236,038	160,891,835	164,981,692	171,755,877	178,782,500
Prince George's	57,706,133	66,013,688	71,777,086	74,889,993	72,093,026	70,938,589	70,238,277	71,860,527	72,346,080	72,601,583
Queen Anne's	6,329,604	6,968,155	7,519,785	7,673,119	7,624,343	7,565,620	7,430,488	7,479,771	7,505,270	7,543,328
St. Mary's	8,361,519	9,409,736	10,322,887	11,011,494	11,180,264	11,224,913	11,404,244	11,606,682	11,687,637	11,742,801
Somerset	1,264,136	1,459,988	1,580,088	1,627,497	1,587,493	1,400,652	1,414,119	1,356,753	1,366,114	1,382,055
Talbot	5,911,061	6,592,296	7,184,409	7,394,200	7,301,017	7,205,776	7,063,898	7,051,837	6,988,453	7,085,602
Washington	10,390,052	11,438,918	12,229,590	12,517,339	12,250,537	12,124,933	11,861,302	11,774,998	11,807,774	11,922,349
Wicomico	5,654,100	6,321,500	6,850,159	6,934,387	6,575,924	6,158,685	5,828,096	5,687,646	5,723,859	5,872,789
Worcester	15,978,471	18,614,288	17,417,771	16,836,557	16,500,694	14,933,712	14,228,078	14,354,330	14,305,718	14,602,130
Statewide	\$522,797,391	\$580,258,229	\$622,516,493	\$639,831,959	\$627,152,668	\$616,427,411	\$618,432,179	\$632,800,262	\$646,334,950	\$661,153,678

Source: State Department of Assessments and Taxation

Appendix 17
County Assessable Base – Real Property
Adjusted for Homestead Tax Credit
(Annual Percent Change)

County	FY 2008	FY 2009	FY 2010	FY 2011	FY 2012	FY 2013	FY 2014	FY 2015	FY 2016 E	FY 2017 E
Allegany	8.6%	5.9%	11.8%	6.3%	2.3%	-0.3%	-0.8%	-0.6%	-0.7%	-0.2%
Anne Arundel	11.4%	8.6%	6.8%	3.5%	-0.4%	0.1%	3.0%	5.2%	3.4%	3.3%
Baltimore City	10.2%	10.3%	12.7%	4.3%	-2.0%	-4.3%	2.2%	7.8%	-0.5%	0.5%
Baltimore	8.7%	8.1%	7.4%	4.7%	0.6%	0.8%	0.6%	1.6%	2.2%	2.6%
Calvert	18.0%	14.0%	9.7%	5.4%	-2.7%	-5.2%	-2.8%	-0.5%	0.5%	0.3%
Caroline	11.9%	10.7%	8.8%	4.1%	-1.9%	-1.9%	-3.8%	-1.2%	-1.4%	-1.4%
Carroll	9.9%	8.9%	8.4%	3.6%	0.0%	-2.4%	-0.9%	0.0%	1.1%	3.2%
Cecil	13.1%	11.5%	8.0%	3.6%	-2.3%	-4.8%	-3.1%	-0.3%	1.0%	0.4%
Charles	14.6%	11.1%	9.9%	1.5%	-2.4%	-3.6%	-2.4%	0.4%	0.7%	3.2%
Dorchester	13.6%	10.5%	7.4%	4.0%	-7.7%	2.9%	-2.6%	-1.9%	-0.4%	-0.1%
Frederick	12.1%	9.2%	7.4%	1.3%	-2.4%	-2.2%	-0.2%	1.8%	2.4%	0.7%
Garrett	14.1%	11.1%	7.3%	6.1%	0.9%	-3.4%	0.4%	-6.8%	-0.4%	0.6%
Harford	12.0%	12.3%	10.0%	3.0%	-0.4%	-1.3%	-0.9%	0.5%	0.2%	0.4%
Howard	9.6%	9.8%	6.3%	4.2%	0.9%	1.6%	2.7%	3.9%	3.2%	2.1%
Kent	13.2%	12.2%	9.3%	3.5%	0.0%	-0.8%	0.3%	-0.1%	0.4%	1.6%
Montgomery	12.5%	11.5%	6.3%	0.8%	-4.1%	-2.4%	1.0%	2.5%	4.1%	4.1%
Prince George's	11.6%	14.4%	8.7%	4.3%	-3.7%	-1.6%	-1.0%	2.3%	0.7%	0.4%
Queen Anne's	13.6%	10.1%	7.9%	2.0%	-0.6%	-0.8%	-1.8%	0.7%	0.3%	0.5%
St. Mary's	12.6%	12.5%	9.7%	6.7%	1.5%	0.4%	1.6%	1.8%	0.7%	0.5%
Somerset	16.7%	15.5%	8.2%	3.0%	-2.5%	-11.8%	1.0%	-4.1%	0.7%	1.2%
Talbot	11.9%	11.5%	9.0%	2.9%	-1.3%	-1.3%	-2.0%	-0.2%	-0.9%	1.4%
Washington	11.2%	10.1%	6.9%	2.4%	-2.1%	-1.0%	-2.2%	-0.7%	0.3%	1.0%
Wicomico	12.0%	11.8%	8.4%	1.2%	-5.2%	-6.3%	-5.4%	-2.4%	0.6%	2.6%
Worcester	18.7%	16.5%	-6.4%	-3.3%	-2.0%	-9.5%	-4.7%	0.9%	-0.3%	2.1%
Statewide	11.8%	11.0%	7.3%	2.8%	-2.0%	-1.7%	0.3%	2.3%	2.1%	2.3%

Source: State Department of Assessments and Taxation